



FMMHA

Organizational Roles



President
(Decision Executive)

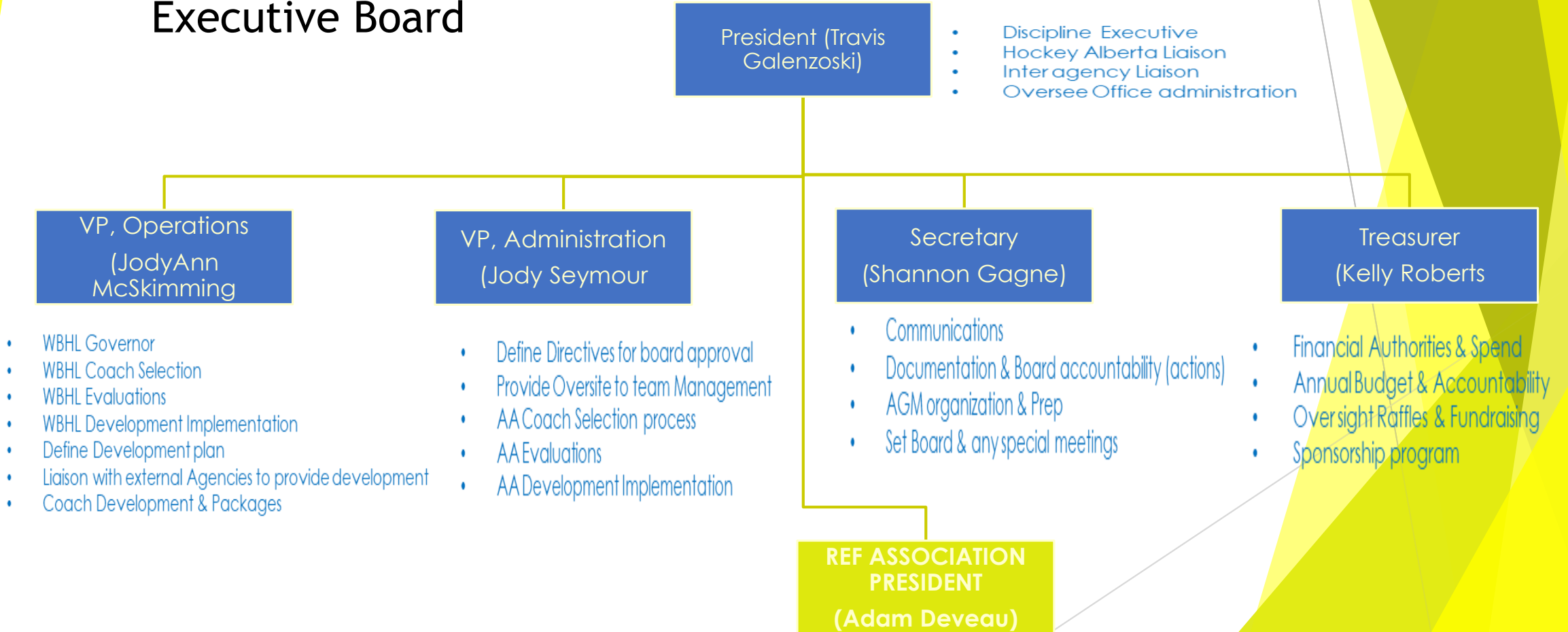
Vice Presidents
(Strategic Direction & Strategy)

Directors
(Plan & Execute)

Managers Coaches Chairs
(Deliver)

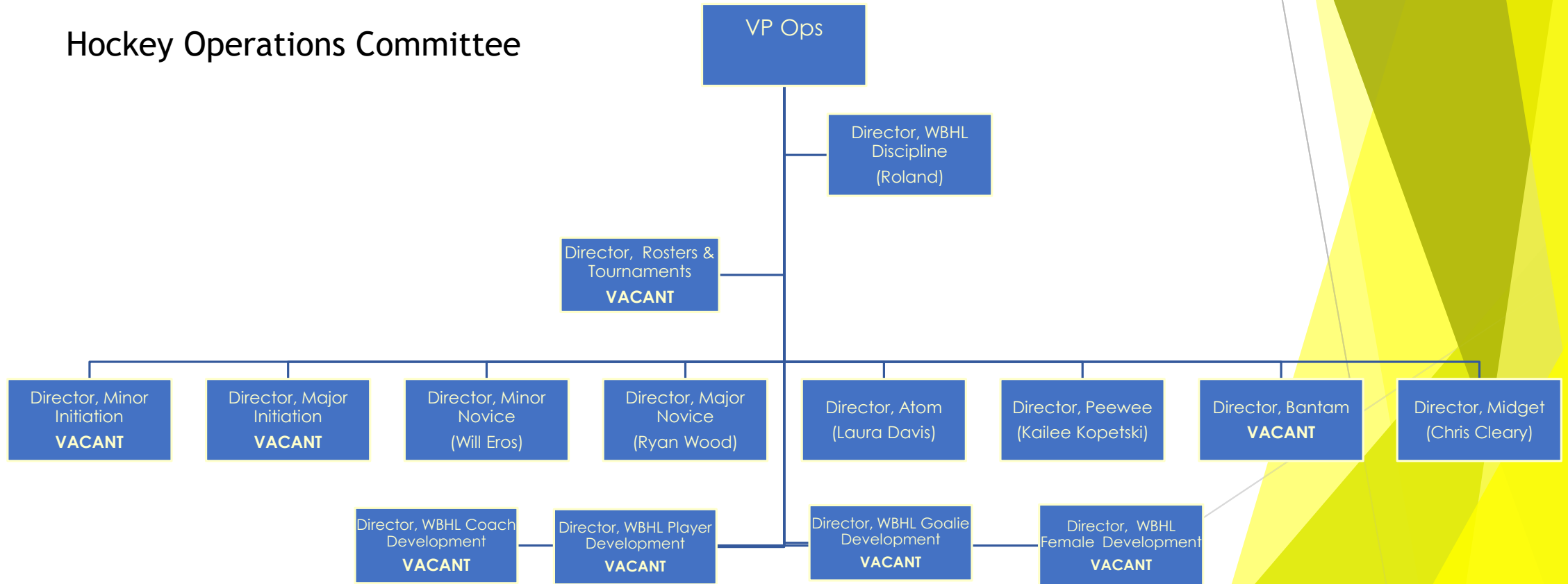


Executive Board



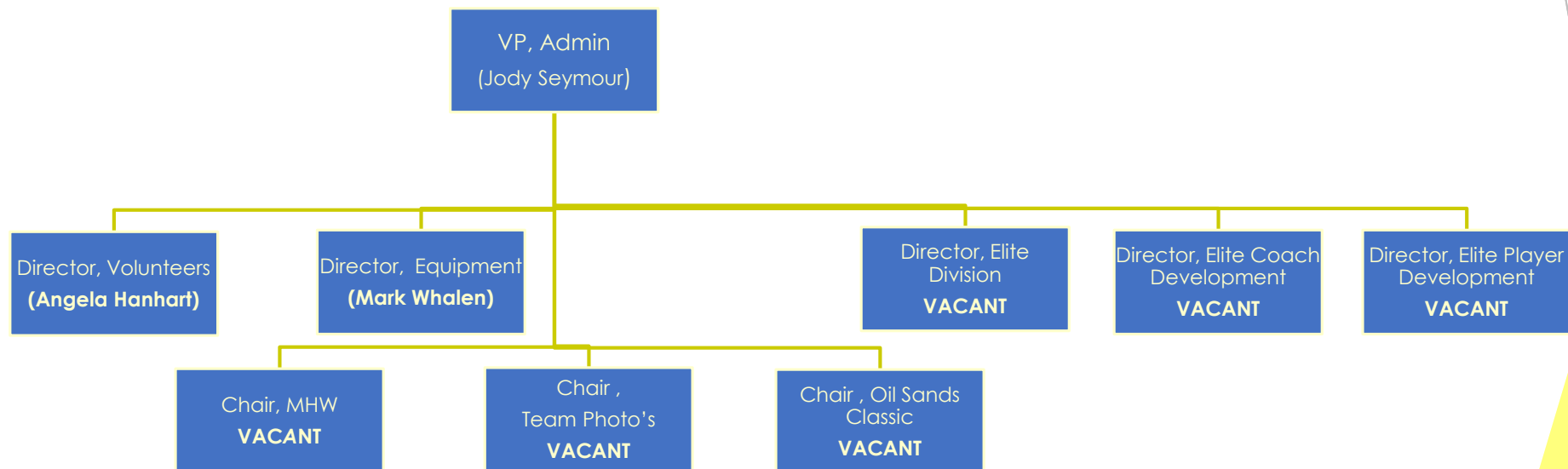


Hockey Operations Committee





Development & Administration Committee





Finance Committee

Treasurer
(Kelly Roberts)

Director, Team Budgets WBHL
(Lynn Tomlinson)

Director, Raffles
(Krista Power)

Director, Team Budgets Elite
VACANT

Registrar
VACANT

Director, Sponsorship
VACANT

Not Strated	In Progress	Complete	Issue or Risk
Main Accountability & Develop stronger Partnerships	Operate Efficiently & Transparently	Continuous Improvement on Process and Documentation	Development
Set up regular Discussions with Ref Association, with intent of seeing development and Success of both organizations	Communication – work on streamlining and improving communication on all activities across the organization, including implementing a team communication tool (le TeamSnap)	Ice Allocation process (Both Internally & Externally)	Define a Coach Development plan for Both AA and WBHL Coach's
There is a Clear escalation Path for concerns/Issues, Clear accountability on quick and effective Investigations, and accountability to appropriate board members on decision outcome.	Clean-up existing Job description(s) and create missing Job descriptions so they are clear and allow accountability.	Develop and Implement Bylaws for Society's	Define a Player Development plan for Both AA and WBHL Coach's, including female and Goalie specific training.
Continue Building strong relationships and alignment with Hockey Alberta	Brainstorm and implement new sources of revenue for the organization	Review Rules and Regs/Game and Conduct to ensure aligned with Bi-laws and directives. (3 goals in Novice)	Explore partnerships and implement development opportunity's with 3 rd party coaches (Possibly "pay to play")
Continue Regular scheduled meetings, with Meeting minutes and actions - ensure summaries are posted on website and shared with the membership	Stabalize & Onboard A teams	Develop and Implement a process for Division Directors	Role the Affiliation Development program out from Atom to Peewee, Bantam & Midget
Volunteer Hours Directive	Office Management & Finacial review - implment efficiency's in the Minor Hockey office	Develop and Implement a process for Team Managers (Including financials)	Stabalize & Define "Intro to Hockey" Programme
Grants for Midget players		Develop a coaches Package that includes expectations & outlines	