

IMHA

2018/2019

STARTING LINEUP



ORDERING STEPS

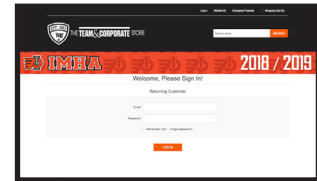
All IMHA orders must be processed online & go through Team Apparel Managers.

Step 1

Go to <http://imha.tbsgearstore.com>

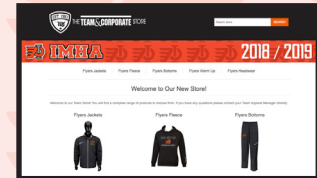
Step 2

Log in with the provided User Name and Password emailed to you by your Team Apparel Manager.



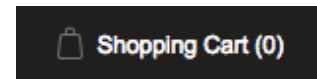
Step 3

Begin Shopping!



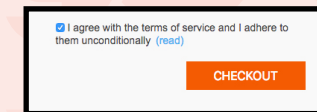
Step 4

To submit your order or review what is in your cart, click on the Shopping Cart icon.



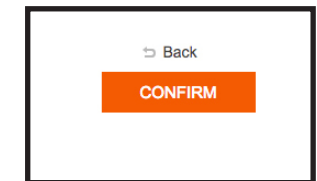
Step 5

When you are ready to place your order, agree with the Terms of Service and click Checkout.



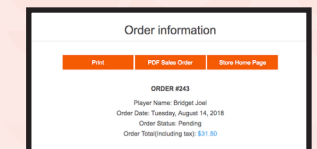
Step 6

Review your order and click Confirm when you are ready to submit.



Step 7

An Order Confirmation Screen will appear and an email will be sent to you and your Team Apparel Manager for his/her final review and Team Order Submission.



1. ORDERS

ALL orders will be processed as a TEAM or BULK Order.

2. TEAM ORDER DEADLINE DATE

Team Apparel Manager will confirm an Order Deadline Date with TBS - Please contact Sean Krause at sean@getitattbs.com to confirm your team's deadline.

- Order Deadline Dates are vital for your team to receive product on time.
- Team orders DO NOT need to be all the same items.

3. APPROVAL

Team Orders will be returned to Team Apparel Manager within 48 hours for Approval.

4. DELIVERY

Team Orders will be in production for 3 – 4 weeks after APPROVAL.

5. READY FOR PICK-UP

Payment by Visa, MC, Debit or Team/Association cheque prior to picking up order is required. Team Orders cannot be paid for individually.



BAUER TEAM TRAVEL COAT

SENIOR: \$160

LOGO INCLUDED:

Logo A Or B Left Chest Or Back Yoke

WHILE QUANTITIES LAST



BAUER FLEX BUBBLE JACKET

SENIOR: \$115 YOUTH: \$110

LOGO INCLUDED:

Logo A Or B Left Chest Or Back Yoke

WHILE QUANTITIES LAST



BAUER FLEX FULL ZIP FLEECE

SENIOR: \$90 YOUTH: \$85

LOGO INCLUDED:

Logo A Or B Left Chest Or Back Yoke

WHILE QUANTITIES LAST



BAUER FLEX JACKET

SENIOR: \$80 YOUTH: \$75

LOGO INCLUDED:

Logo A Or B Left Chest Or Back Yoke

WHILE QUANTITIES LAST



BAUER PREMIUM 1/4 ZIP

SENIOR: \$65

LOGO INCLUDED:

Logo A Or B Left Chest

WHILE QUANTITIES LAST



BAUER PREMIUM FULL ZIP

SENIOR: \$65 YOUTH: \$65

LOGO INCLUDED:

Logo A Or B Left Chest

WHILE QUANTITIES LAST



BAUER CORE FLEECE HOODIE

SENIOR: \$60 YOUTH: \$60

LOGO INCLUDED:

Logo E Left Chest Or Logo F Or G Full Front

Available In: Black, Heather Grey

WHILE QUANTITIES LAST



BAUER PREMIUM FULL ZIP FLEECE

WOMEN: \$65

LOGO INCLUDED:

Logo A Or B Left Chest

WHILE QUANTITIES LAST



BAUER FLEX PANTS

SENIOR: \$50 YOUTH: \$45

LOGO NOT INCLUDED

Logo C Or D Right Thigh Or Right Calf

WHILE QUANTITIES LAST



BAUER PREMIUM FLEECE JOGGER

SENIOR: \$45 YOUTH: \$45

LOGO NOT INCLUDED

Logo E Right Thigh Or Right Calf

WHILE QUANTITIES LAST



BAUER PREMIUM FLEECE TAPERED SWEAT PANT

SENIOR: \$45 YOUTH: \$45

LOGO NOT INCLUDED

Logo E Right Thigh Or Right Calf

WHILE QUANTITIES LAST



BAUER JOGGER PANT

WOMEN: \$45

LOGO NOT INCLUDED

Logo E Right Thigh Or Right Calf

WHILE QUANTITIES LAST



BAUER TEAM TECH SHORT SLEEVE

SENIOR: \$35 YOUTH: \$35

LOGO INCLUDED:

Logo E Left Chest Or Logo F Or G Full Front

Available In: Heather Grey, Black

WHILE QUANTITIES LAST



BAUER CORE ATHLETIC SHORT

SENIOR: \$35 YOUTH: \$35

LOGO INCLUDED:

Logo E Right Thigh

WHILE QUANTITIES LAST



BAUER / NEW ERA ADJUSTABLE MESHBACK CAP

OSFA: \$30

LOGO INCLUDED:

Logo C Or D Left Panel

WHILE QUANTITIES LAST



BAUER / NEW ERA MESHBACK CAP

SENIOR: \$30 YOUTH: \$30

LOGO INCLUDED:

Logo C Or D Left Panel

WHILE QUANTITIES LAST



BAUER / NEW ERA KNIT TOQUE

OSFA: \$25

LOGO INCLUDED:

Logo C Or D Hat Front

Available In: Orange, Black

WHILE QUANTITIES LAST



**BAUER / NEW ERA TEAM
STRIPED POM POM**

OSFA: \$30

LOGO INCLUDED:

Logo C Or D Hat Front

Available In: Orange, Black

WHILE QUANTITIES LAST

LOGO PLACEMENTS



Left Chest



Back Yoke



Full Front



Right Thigh; Number Only
Left Thigh



Right Calf; Number Only
Left Calf



Right Thigh; Name & Number
Left Thigh



Left Panel



Hat Front

IMHA LOGOS - \$10

Left Chest / Back Yoke Embroidery on Jackets

Left Chest Embroidery on Zip Up Tops



A - 3.5"w x 2.6"h



B - 3.5"w x 2.6"h

Left Panel Embroidery on Hats

Hat Front Embroidery on Toques

Right Thigh / Right Calf Embroidery on Trackpants



C - 1.81"w x 1.36"h



D - 1.81"w x 1.36"h

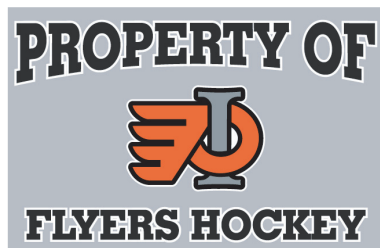
Right Thigh / Right Calf Heat Press on Sweatpants & Shorts

Left Chest Heat Press on Hoodies & T-Shirts



E - 3.5"w x 2.6"h

Full Front Heat Press on Hoodies & T-Shirts



F - 8"w x 4.8"h



G - 8"w x 6.5"h

PERSONALIZATION

\$5_{+GST} NAME (PER LOCATION)

\$5_{+GST} NUMBER (PER LOCATION)

\$7.50_{+GST} NAME & NUMBER (STACKED IN ONE LOCATION)

COLOURS: ORANGE, UNLESS OTHERWISE REQUESTED

ADD-ONS

\$3_{+GST} C'S & A'S TWILL ONE COLOUR (NOT APPLIED)

\$5_{+GST} C'S & A'S SUBLIMATED (NOT APPLIED)

\$5_{+GST} SEWING PER LOGO PER LOCATION

\$15_{+GST} SUBLIMATED TWILL NAME BAR

HELMETS

\$3_{+GST} HELMET NUMBERS (ONE OR TWO DIGITS)

\$4_{+GST} HELMET LOGOS (TWO STICKERS)

\$5_{+GST} TEAM SET: 2 LOGOS AND 1 NUMBER



BAUER APPAREL SIZING CHART

MEN'S SIZING

SIZE	CHEST		WAIST		SEAT		HEIGHT	
	IN	CM	IN	CM	IN	CM	IN	CM
XS	35-36	88.9-91.4	27-28	68.6-71.1	34-35	86.4-88.9	5'1"-5'5"	154.9-165.1
S	37-38	94.0-96.5	29-30	73.7-76.2	36-37	91.4-94.0	5'5"-5'9"	165.1-175.3
M	39-40	99.1-101.6	31-33	78.7-83.8	38-39	96.5-99.1	5'9"-5'11"	175.3-180.3
L	41-43	104.1-109.2	34-35	86.4-88.9	41-42	104.1-106.7	5'11"-6'1"	180.3-185.4
XL	44-46	111.8-116.8	36-37	91.4-94.0	43-44	109.2-111.8	6'1"-6'3"	185.4-190.5
XXL	47-49	119.4-124.5	38-40	96.5-101.6	45-47	114.3-119.4	6'3"-6'5"	190.5-195.6

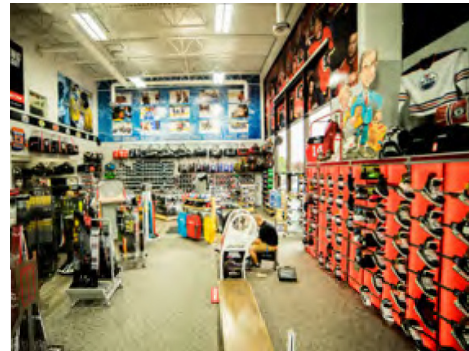
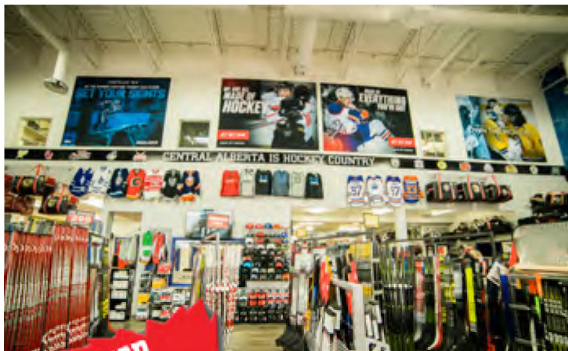
YOUTH SIZING

SIZE	CHEST		WAIST		SEAT		HEIGHT	
	IN	CM	IN	CM	IN	CM	IN	CM
XS (5-6)	24-26	61.0-66.0	22 1/2-23 1/2	57.2-59.7	24 1/2-25 1/2	62.2-67.3	4'0"-4'2"	121.9-127.0
S (7-8)	26-29	66.0-73.7	23 1/2-24 1/2	59.7-62.2	26 1/2-28 1/2	67.3-72.4	4'2"-4'7"	127.0-139.7
M (10-12)	29-32	73.7-81.3	24 1/2-25 1/2	62.2-64.8	28 1/2-30 1/2	72.4-77.5	4'7"-4'11"	139.7-149.9
L (14-16)	32-34 1/2	81.3-87.6	25 1/2-27 1/2	64.8-69.9	30 1/2-33 1/2	77.5-85.1	4'11"-5'4"	149.9-162.3
XL (18)	34 1/2-35 1/2	87.6-90.2	27 1/2-29 1/2	69.9-74.9	33 1/2-35 1/2	85.1-90.2	5'4"-5'6"	162.3-167.6

PLEASE NOTE: THIS SIZING CHART IS FOR REFERENCE ONLY AND MAY NOT REFLECT PERSONAL PREFERENCE.



TALK TO YOUR SALES REP ABOUT ITEMS AVAILABLE TO YOUR ASSOCIATION THROUGH THE TBS HOCKEY STORE. GLOVES, UNDER CLOTHES, SOCKS, STICKS, SKATES, HELMETS.



SHOP LOCAL

BOTTOM OF THE NORTH HILL

getitatTBS.com

Please allow 3 - 4 weeks delivery time on all orders, after approval & submission

Any RUSH orders are subject to approval and availability

ASK ABOUT CUSTOM TEAM ORDERS TODAY

**Contact Sean Krause
in our Team Division
at sean@getitattbs.com**

403-342-2278



**SALES MANAGER
Tyler Kondratoff
tyler@getitattbs.com**