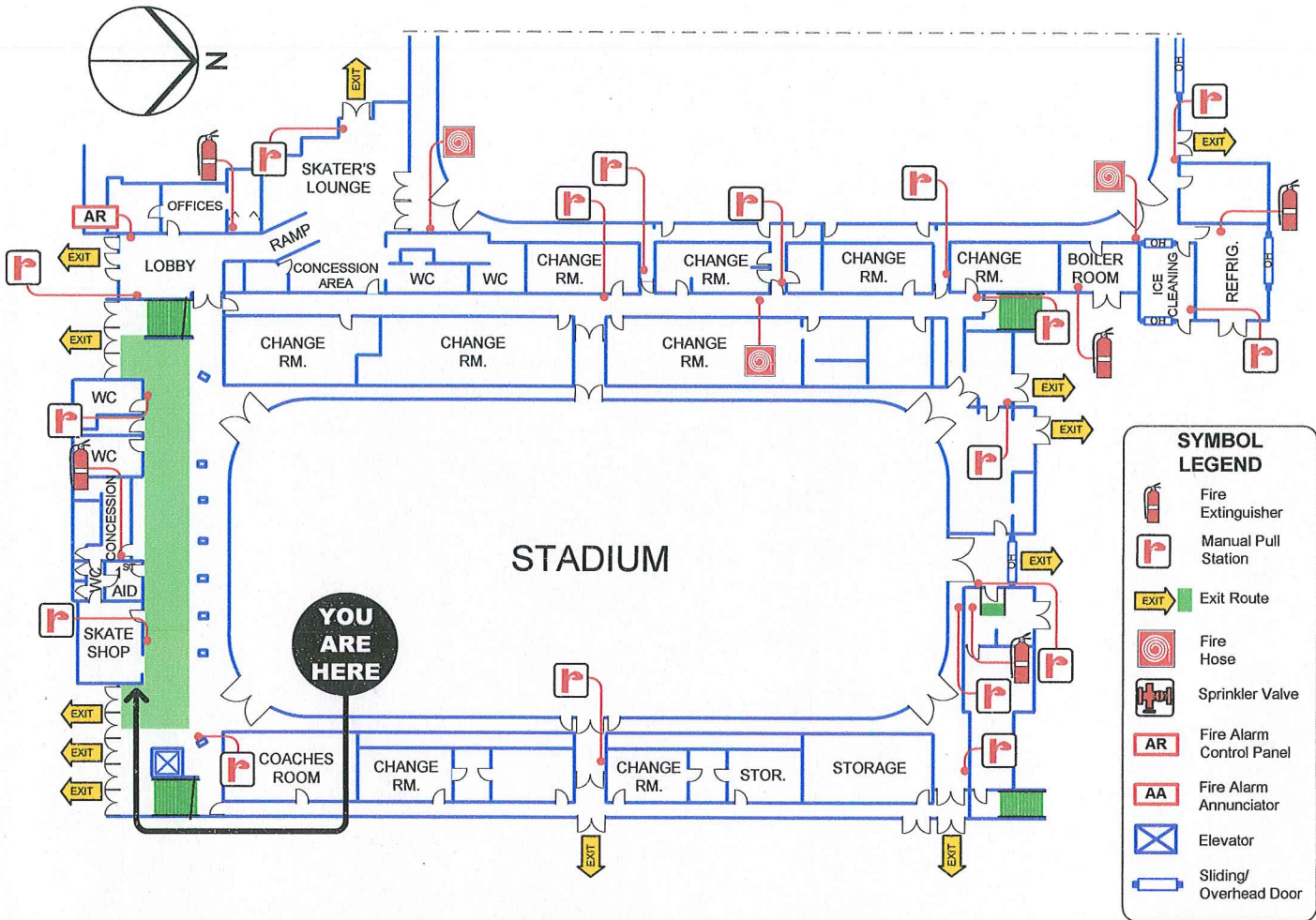


FIRE SAFETY PLAN

7551 Minoru Gate, Richmond, B.C.

GROUND FLOOR



IF YOU DISCOVER A FIRE . . .

- ◆ **REMOVE** people from immediate danger.
- ◆ **ACTIVATE** the nearest fire alarm pull station.
- ◆ **EVACUATE** via the nearest safe exit. **Do Not Use Elevator.**
- ◆ **PHONE 9-1-1** to report a fire at: **7551 Minoru Gate, Richmond, B.C.**
- ◆ **FIGHT** the fire **ONLY** if it is **SMALL** and you are **NOT** alone.
- ◆ **PROCEED** to the designated Evacuation Assembly Area.



UPON HEARING A FIRE ALARM . . .

- ◆ **EVACUATE** via the nearest safe exit. **Do Not Use Elevator.**
- ◆ **ASSIST** persons requiring assistance.
- ◆ **ASSEMBLE** clear of the building and arriving emergency vehicles.
- ◆ **PHONE 9-1-1** to report a fire alarm at: **7551 Minoru Gate, Richmond, B.C.**
- ◆ **DO NOT** re-enter the building until the fire department gives the "ALL CLEAR".



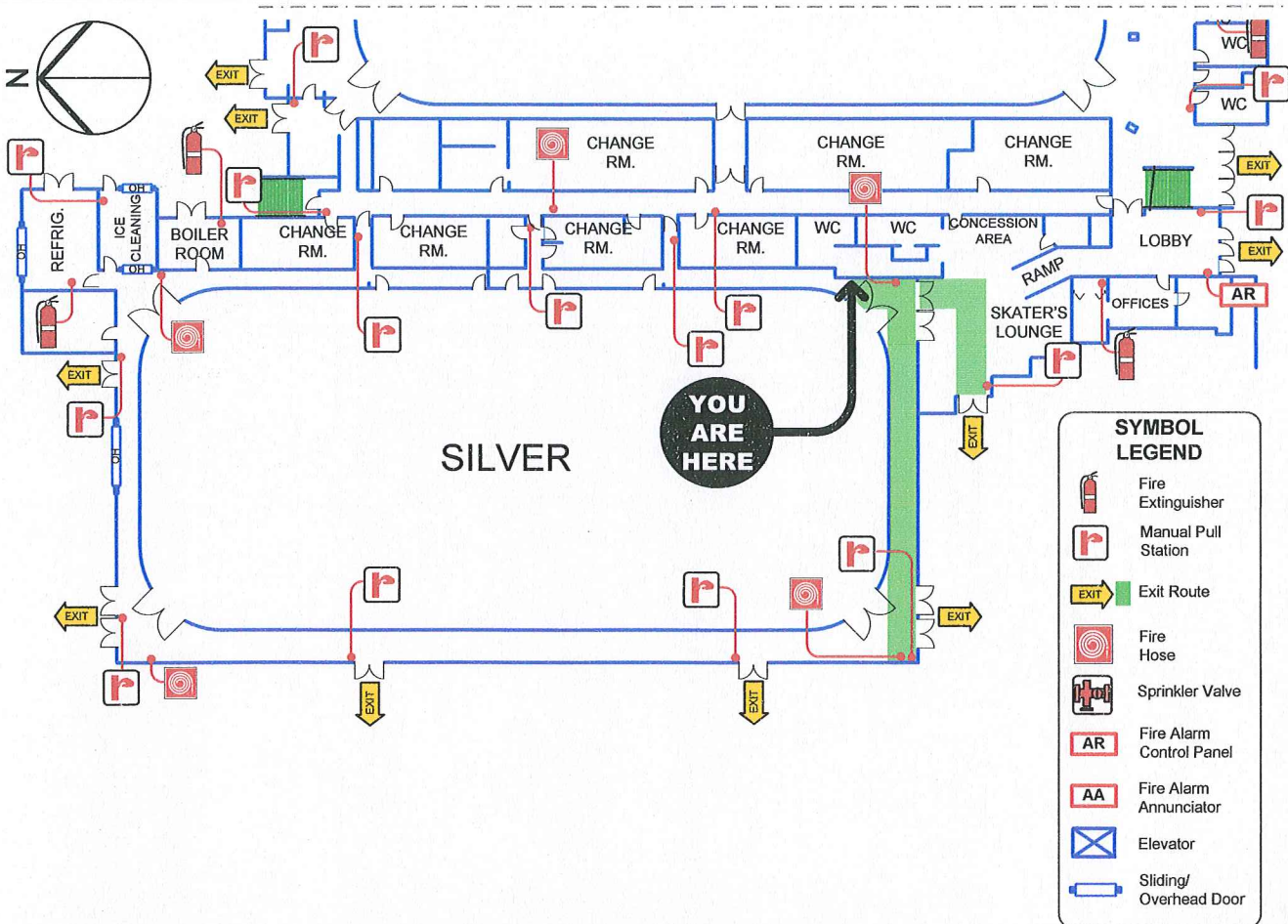
EVACUATION ASSEMBLY AREA – Away from building and arriving emergency vehicles.



FIRE SAFETY PLAN

7551 Minoru Gate, Richmond, B.C.

GROUND FLOOR



SYMBOL LEGEND	
	Fire Extinguisher
	Manual Pull Station
	Exit Route
	Fire Hose
	Sprinkler Valve
	Fire Alarm Control Panel
	Fire Alarm Annunciator
	Elevator
	Sliding/Overhead Door

IF YOU DISCOVER A FIRE . . .

- ◆ **REMOVE** people from immediate danger.
- ◆ **ACTIVATE** the nearest fire alarm pull station.
- ◆ **EVACUATE** via the nearest safe exit. **Do Not Use Elevator.**
- ◆ **PHONE 9-1-1** to report a fire at: **7551 Minoru Gate, Richmond, B.C.**
- ◆ **FIGHT** the fire **ONLY** if it is **SMALL** and you are **NOT** alone.
- ◆ **PROCEED** to the designated Evacuation Assembly Area.



UPON HEARING A FIRE ALARM . . .

- ◆ **EVACUATE** via the nearest safe exit. **Do Not Use Elevator.**
- ◆ **ASSIST** persons requiring assistance.
- ◆ **ASSEMBLE** clear of the building and arriving emergency vehicles.
- ◆ **PHONE 9-1-1** to report a fire alarm at: **7551 Minoru Gate, Richmond, B.C.**
- ◆ **DO NOT** re-enter the building until the fire department gives the "ALL CLEAR".

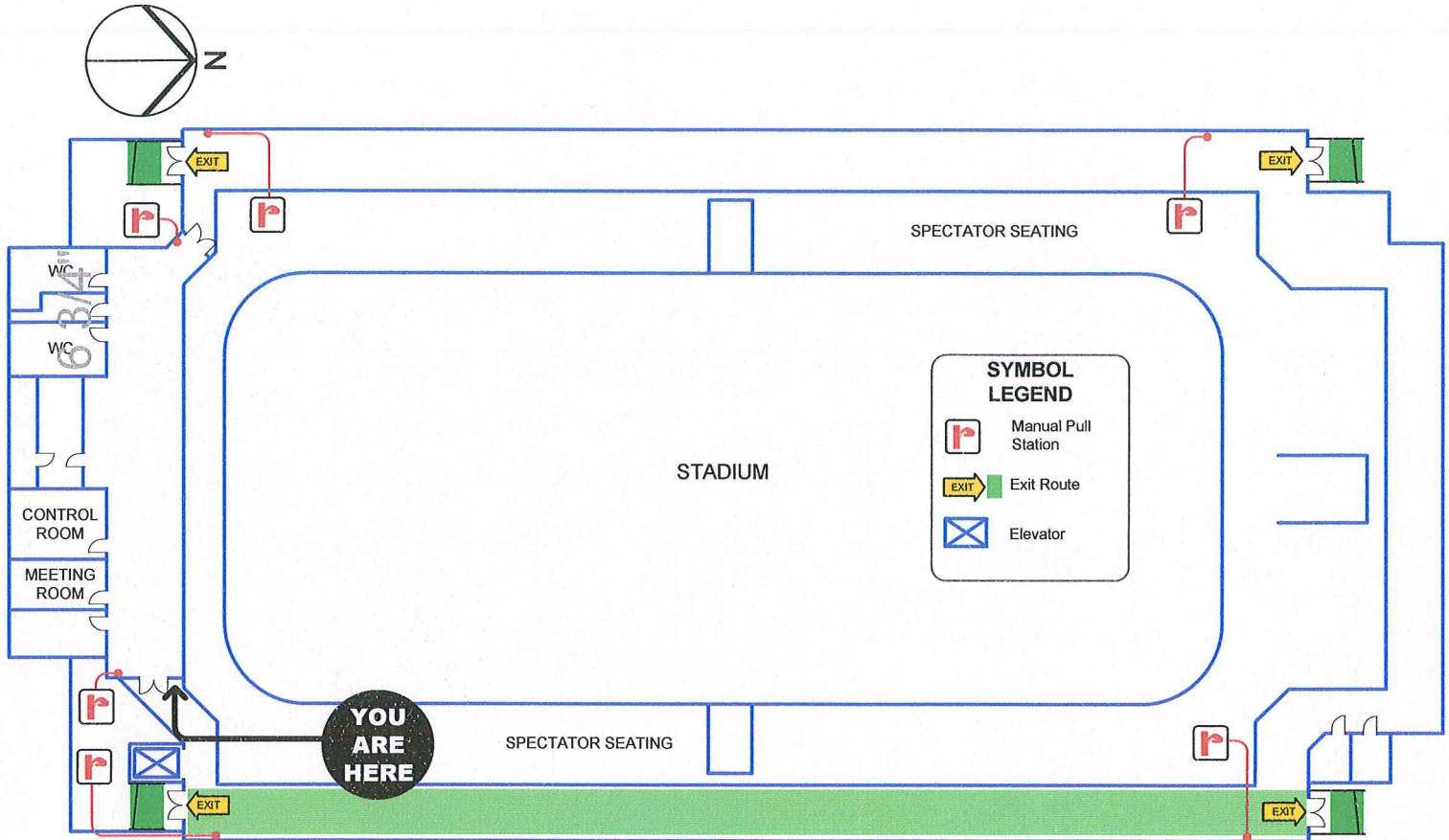


EVACUATION ASSEMBLY AREA – Away from building and arriving emergency vehicles.

FIRE SAFETY PLAN

7551 Minoru Gate, Richmond, B.C.

UPPER FLOOR



IF YOU DISCOVER A FIRE . . .

- ◆ REMOVE people from immediate danger.
- ◆ ACTIVATE the nearest fire alarm pull station.
- ◆ EVACUATE via the nearest safe exit. **Do Not Use Elevator.**
- ◆ PHONE 9-1-1 to report a fire at: **7551 Minoru Gate, Richmond, B.C.**
- ◆ FIGHT the fire ONLY if it is SMALL and you are NOT alone.
- ◆ PROCEED to the designated Evacuation Assembly Area.



UPON HEARING A FIRE ALARM . . .

- ◆ EVACUATE via the nearest safe exit. **Do Not Use Elevator.**
- ◆ ASSIST persons requiring assistance.
- ◆ ASSEMBLE clear of the building and arriving emergency vehicles.
- ◆ PHONE 9-1-1 to report a fire alarm at: **7551 Minoru Gate, Richmond, B.C.**
- ◆ DO NOT re-enter the building until the fire department gives the "ALL CLEAR".



EVACUATION ASSEMBLY AREA – Away from building and arriving emergency vehicles.