



NATIONAL COACHING CERTIFICATION PROGRAM (NCCP)

The National Coach Certification Program (NCCP) has gone through a number productive changes in the past two (2) seasons and this document will serve as the rubric to determine what a coach requires to coach at any given level. Certification details are listed as appendices and can be determined using the chart below. Questions can be directed to info@bchockey.net.

TEAM REQUIREMENTS

Team Designation	Role	Courses Required	Certification Pathway & Regulation
Pre Novice	Head Coach	Coach 2 – Coach Level	Appendix A, Regulation 2.27
Pre Novice	Assistant Coach	Coach 2 – Coach Level	Appendix A, Regulation 2.27
Novice	Head Coach	Coach 2 – Coach Level	Appendix A, Regulation 2.27
Novice	Assistant Coach	Coach 2 – Coach Level	Appendix A, Regulation 2.27
Atom	Head Coach	Coach 2 – Coach Level, Instructional Stream – Checking	Appendix A, Regulation 2.27/2.28
Atom	Assistant Coach	Coach 2 – Coach Level	Appendix A, Regulation 2.27
Pee Wee – recreational	Head Coach	Coach 2 – Coach Level, Instructional Stream – Checking	Appendix A, Regulation 2.27/2.28
Pee Wee – recreational	Assistant Coach	Coach 2 – Coach Level	Appendix A, Regulation 2.27/2.28
Pee Wee carded	Head Coach	Development 1, Instructional Stream - Checking	Appendix B, E Regulation 2.26/2.28
Pee Wee - carded	Assistant Coach	Development 1	Appendix B, E Regulation 2.26
Bantam – recreational	Head Coach	Coach 2 – Coach Level, Instructional Stream - Checking	Appendix A, Regulation 2.27/2.28
Bantam – recreational	Assistant Coach	Coach 2 – Coach Level	Appendix A, Regulation 2.27
Bantam carded	Head Coach	Development 1, Instructional Stream – Checking	Appendix B, E Regulation 2.26/2.28
Bantam carded	Assistant Coach	Development 1	Appendix B, E Regulation 2.26
Bantam Tier 1	Head Coach	High Performance 1, Instructional Stream – Checking	Appendix C, E Regulation 2.29/2.28
Bantam Tier 1	Assistant Coach	Development 1	Appendix B, E Regulation 2.26
Midget – recreational	Head Coach	Coach 2 – Coach Level	Appendix A, Regulation 2.27
Midget – recreational	Assistant Coach	Coach 2 – Coach Level	Appendix A, Regulation 2.27
Midget carded	Head Coach	Development 1	Appendix B, E Regulation 2.26
Midget carded	Assistant Coach	Development 1	Appendix B, E Regulation 2.26
Major Midget (MML)	Head Coach	High Performance 1	Appendix C, E Regulation 2.29
Major Midget (MML)	Assistant Coach	Development 1	Appendix B, E Regulation 2.26
Female Major Midget (FMAAA)	Head Coach	High Performance 1	Appendix C, E Regulation 2.29
Female Major Midget (FMAAA)	Assistant Coach	Development 1	Appendix B, E Regulation 2.26
Junior B	Head Coach	Development 1	Appendix B, E Regulation 2.26
Junior B	Assistant Coach	Development 1	Appendix B, E Regulation 2.26
Junior A	Head Coach	High Performance 1	Appendix C, E Regulation 2.29
Junior A	Assistant Coach	Development 1	Appendix B, E Regulation 2.26





APPENDIX A.

COMMUNITY COACH STREAM: COACH 2 - COACH LEVEL

2.27

All BC Hockey recreational (non-carded) coaches are required to either:

- a) Attend a Coach 2 – Coach Level clinic by December 15 of the current season
- b) Achieve a trained status by previously attending the Coach 2 – Coach Level (or equivalent) clinic and submitting the required to complete the post clinic documents by March 31 of their clinic season

PATHWAY FOR COACH 2 – COACH LEVEL

PATHWAY	ATTENDED	TRAINED	CERTIFICATION MAINTENANCE
All Years	Hockey University Modules 1-12 Clinic Attendance All in Class Tasks	Completion of Coach Workbook and Submission of Letter of Verification.	10 Professional Development Points – 5 Years
Certification is not required at Coach 2 and a coach can stay “Trained” indefinitely.			

Please Note: All delegate profiles on the Hockey Canada Registry (HCR) have updated nomenclature.

Current Clinic Name	Previously Known As	Previously Known As
Coach 2 – Coach Level	Coach – Hybrid	Coach Stream





APPENDIX B.

DEVELOPMENT 1

2.26

All BC Hockey/Hockey Canada Coaches registered to teams above the recreational level must be trained or certified at the Development 1 or High Performance 1 by December 1st of the current season. Trained status expires on August 31 of the current clinic season and coaches will have until March 31 to submit the required post clinic coursework and relay their intent to become certified.

PATHWAYS FOR DEVELOPMENT 1			
PATHWAY	TRAINED	CERTIFIED	CERTIFICATION MAINTENANCE
Pre – 2009	All Coaches in this pathway have Legacy Development 1 Certified Status		Prior to January 1, 2021 all coaches within these pathways must complete the MED Competition Introduction online evaluation + 20 Professional Development Points to maintain certified status
January 1, 2009 – June 30, 2014	All Coaches in this pathway will be Development 1 Certified		
July 1, 2014 – Present	Clinic Attendance	1. Written Evaluation (Workbook) 2. Field Evaluation (Practice) 3. MED Competition – Introduction	20 Professional Development Points

Please Note: All delegate profiles on the Hockey Canada Registry (HCR) have updated nomenclature.

Current Clinic Name	Previously Known As	Previously Known As
Development 1	Developmental 1	Intermediate





APPENDIX C.

HIGH PERFORMANCE 1

2.29

All Head Coaches registered to teams competing in Regional or National Championships must either be trained or certified at the High Performance 1 level by December 1 of the current season. Trained status expires on August 31 of the current clinic season and coaches will have until September 15 of the following season to submit the required post clinic coursework and relay their intent to become certified. All Assistant Coaches registered to teams competing in Regional or National Championships must be either trained or certified at the High Performance 1 or Development 1 level.

Note: Commencing in the 2016-2017 season all Junior A Head Coaches will be required to be trained or certified at the High Performance 1 level.

PATHWAYS FOR HIGH PERFORMANCE 1			
PATHWAY	TRAINED	CERTIFIED	CERTIFICATION MAINTENANCE
Pre 2010	Advanced 1 or HPI Clinic Attendance	1.Written Assignment 2.Field Evaluation (Game and Practice) 3.Theory 3	30 Professional Development Points – 5 Years
To fully certify in this pathway a coach is still required to complete the old Theory 3 which is now in the form of Multi-Sport Modules			
PATHWAY	TRAINED	CERTIFIED	CERTIFICATION MAINTENANCE
2010 - 2012	HPI Clinic Attendance	1.Written Assignment 2.Field Evaluation (Game and Practice) 3.MED – Comp Dev Online Evaluation	30 Professional Development Points – 5 Years
PATHWAY	TRAINED	Five (5) minutes	CERTIFICATION MAINTENANCE
2013 - Present	HPI Clinic Attendance	1.Written Assignment 2.Field Evaluation (Game and Practice) 3.MED – Comp Dev Online Evaluation 4.Leading Drug Free Sport Online Evaluation 5.Managing Conflict Online Evaluation	30 Professional Development Points – 5 Years

Please Note: All delegate profiles on the Hockey Canada Registry (HCR) have updated nomenclature.

Current Clinic Name	Previously Known As
High Performance 1	Advanced 1





APPENDIX D.

INSTRUCTIONAL STREAM - CHECKING

2.28

All Head Coaches of Atom, Pee Wee or Bantam Teams must complete the BC Hockey/Hockey Canada Instructional Stream Checking Clinic. Coaches will have until December 15 of the current season to complete the program.

NOTE: It is recommended that all registered coaches complete the BC Hockey/Hockey Canada checking skills clinic.

[Click here](#) for details and registration information for the Instructional Stream – Checking Course.





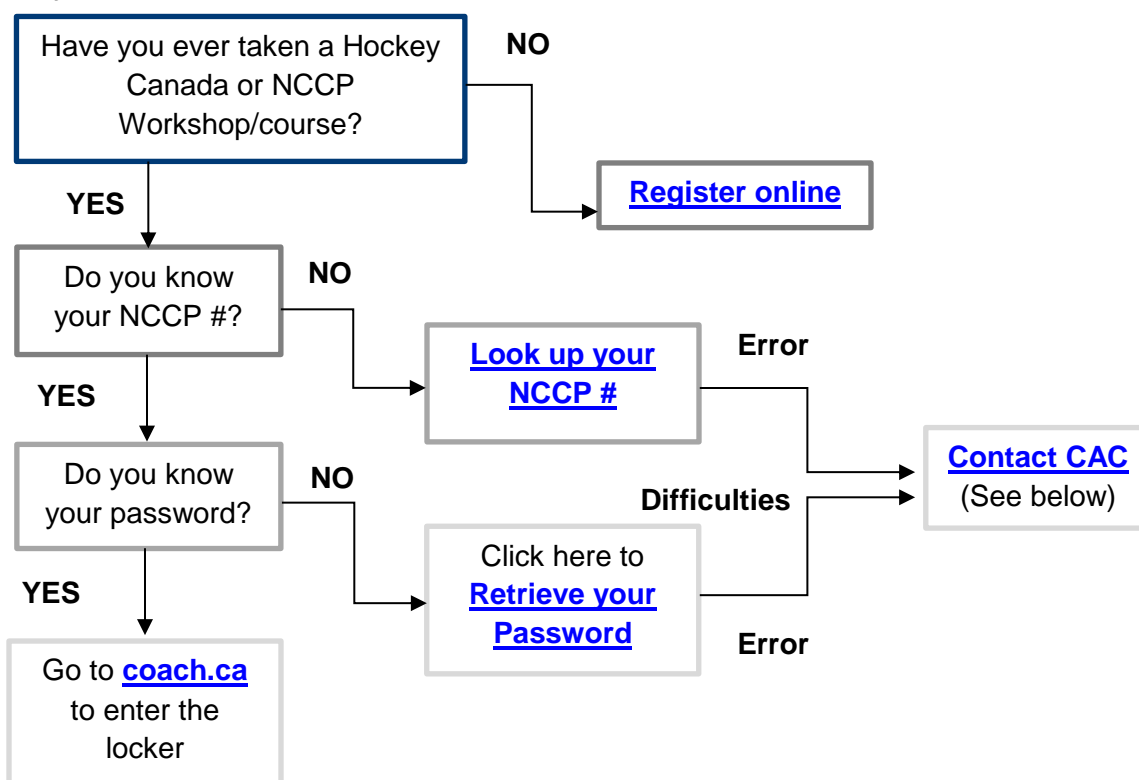
APPENDIX E. Making Ethical Decisions – Development 1 and High Performance 1

The following will outline the correct process to complete the Making Ethical Decisions (MED) online course. Completion is required to attain certification at the Development 1 and High Performance 1 level. The MED course is done through the Coaching Association of Canada website and requires additional log-in information and a completely unique NCCP number.

Development 1 – For those Coaches who attended a Development 1 course you will be required to take the Competition - Introduction MED.

High Performance 1 – For those Coaches who attended a High Performance 1 course you will be required to take the Competition - Development MED.

General Pathway:



If you encounter any issues, difficulties or error messages, or if you have questions about NCCP#s or acquiring one please contact Coach & Partner Services at 613.235.5000 ext. 1 or by email at coach@coach.ca.

