

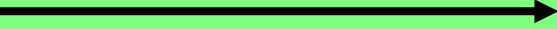
UEFA 'B' Practices

- Functional Practice
- Wide player forced or chooses to go inside

**Target
Player**

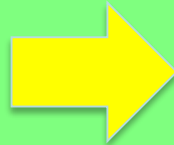
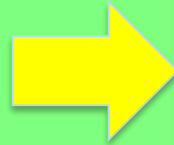


Path of the player 

Path of the ball 

KEY TRANSFER -

Practice




Match



**Target
Player**



Path of the player 

Path of the ball 

UEFA 'B Licence *Session Types*



Advanced
Technical
Practice
Of Play

Wave
Skills
Practice

Squad
Session

SSG 8v8 and
Phase of Play
(Attack v
Defence)

Function

**Target
Player**



Path of the player - - - - ->
Path of the ball —————>

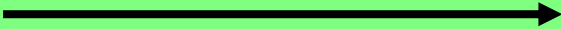
SESSION MANAGEMENT

- ✓ Playing area relative to UEFA 'B' guidelines
- ✓ Equipment of a high standard
- ✓ Session outcomes technical & tactical
- ✓ Stages of learning around learning outcomes
- ✓ Interaction and confirmation of learning
- ✓ Free play
- ✓ Interventions
- ✓ Developed challenges
- ✓ Analysis and Evaluation

**Target
Player**



Path of the player 

Path of the ball 

Considerations

- Size of pitch
- Number of players
- Setting up tactical pictures/scenarios
- Delivering technical contact and tactical decision making
- Game transfer (gamecraft)

**Target
Player**



Path of the player 

Path of the ball 

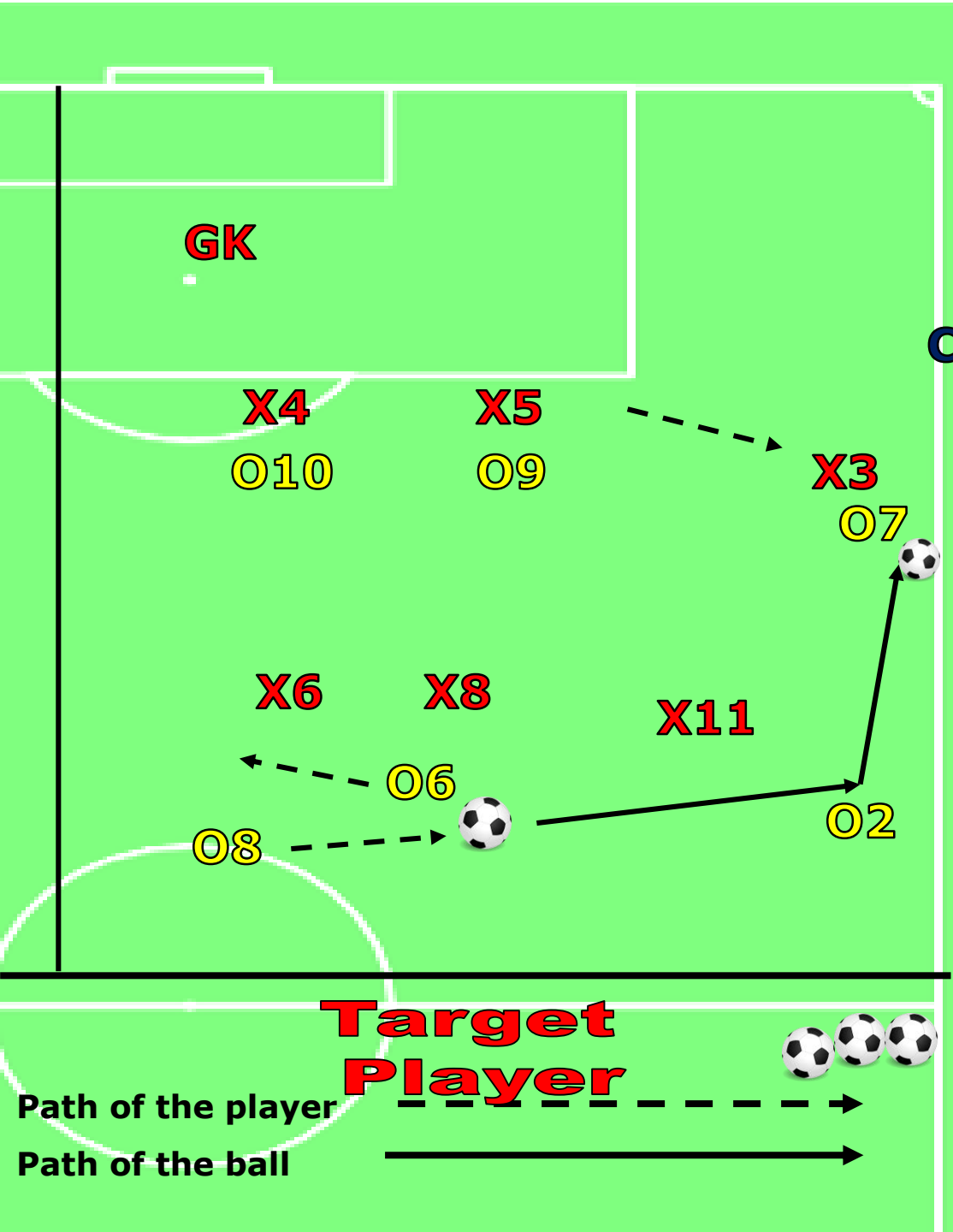
FUNCTION

RESPONSIBILITIES OF THE WIDE PLAYER WHEN FORCED INSIDE

Designed to develop the understanding of a PLAYER on their responsibility in the attack when forced inside by the defender or when chosen to go inside

How to coach the team on primary, secondary and fringe players engaging all players in the session





FUNCTION

RESPONSIBILITIES OF THE WIDE PLAYER WHEN FORCED INSIDE

Set up

Defending Xs GK 3-2-1

(Attacking Os T - 1-3-2

Organisation

- ✓ The target player (T) can be used for both teams to recycle the ball and keep the game flowing, the defending team can score by passing to the target player.
- ✓ Area coned off 2 yards outside far post to eliminate **Right Back**
- ✓ Set up in the ATTACKING 1/3 of the pitch to attack the penalty area straight away
- ✓ Coaching position near O7

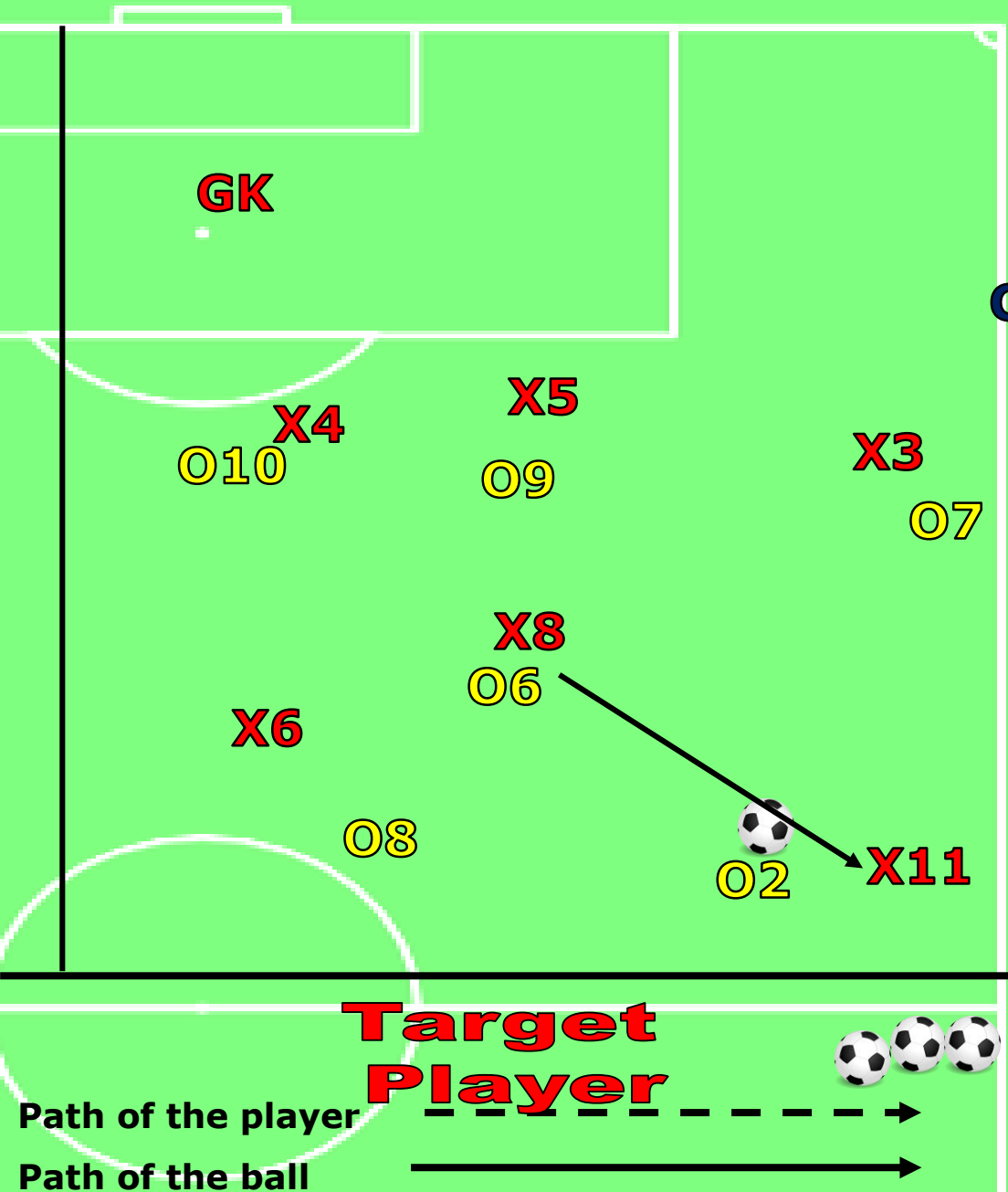
The Start Point No1

- O8 & O6 complete a take in midfield with O8 in possession
- O8 passes quickly to O2 wide.
- O7 creates space to receive and turn

FUNCTION RESPONSIBILITIES OF THE WIDE PLAYER WHEN FORCED INSIDE

The Start Point No2

- O8 is pressed by O6 who then passes under pressure to X11
- O2 intercepts the pass and is on the front foot
- Ball is then played to O7 first time



FUNCTION

RESPONSIBILITIES OF THE WIDE PLAYER WHEN FORCED INSIDE

Scenario No1

Full back closes off the line

- 07 makes a decision (**depending on what X3 does**) to drive the ball inside across the weak side of X3

Coach the Following Key Aspects

Primary Player

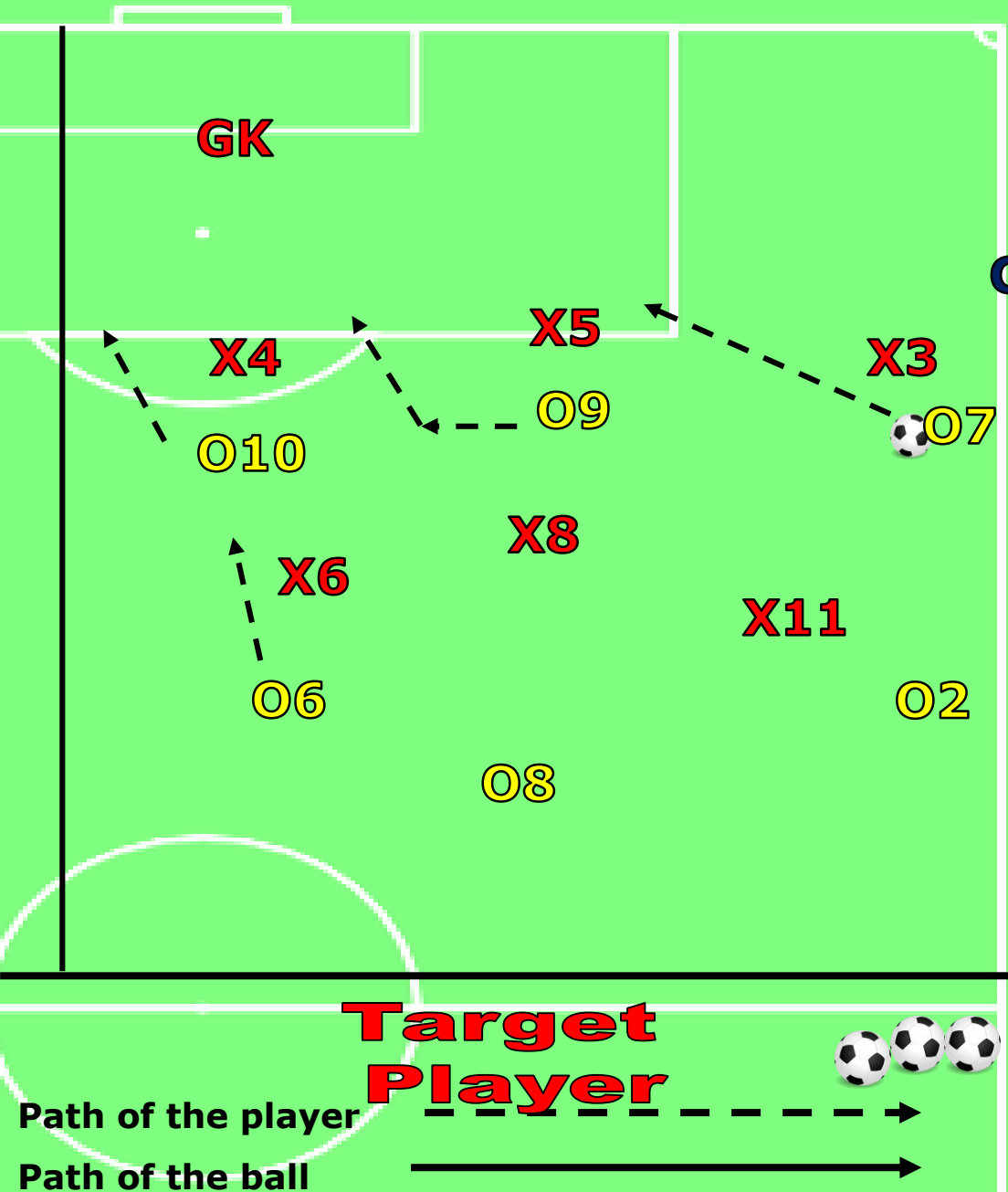
- ✓ 07 takes a positive 1st touch across X3 and drives towards the near post and into the penalty area
- ✓ End product or combination play

Secondary Players

- 09 creates a hole/space for 07 to drive into.
- 010 drives off the shoulder of X4
- Movement of strikers to create space and develop an end product

Fringe

- **06 & 08** Support Cover & Balance



FUNCTION

RESPONSIBILITIES OF THE WIDE PLAYER WHEN FORCED INSIDE

Picture No3

Combine to Overlap

Coach the Following Key Aspects

Primary Players

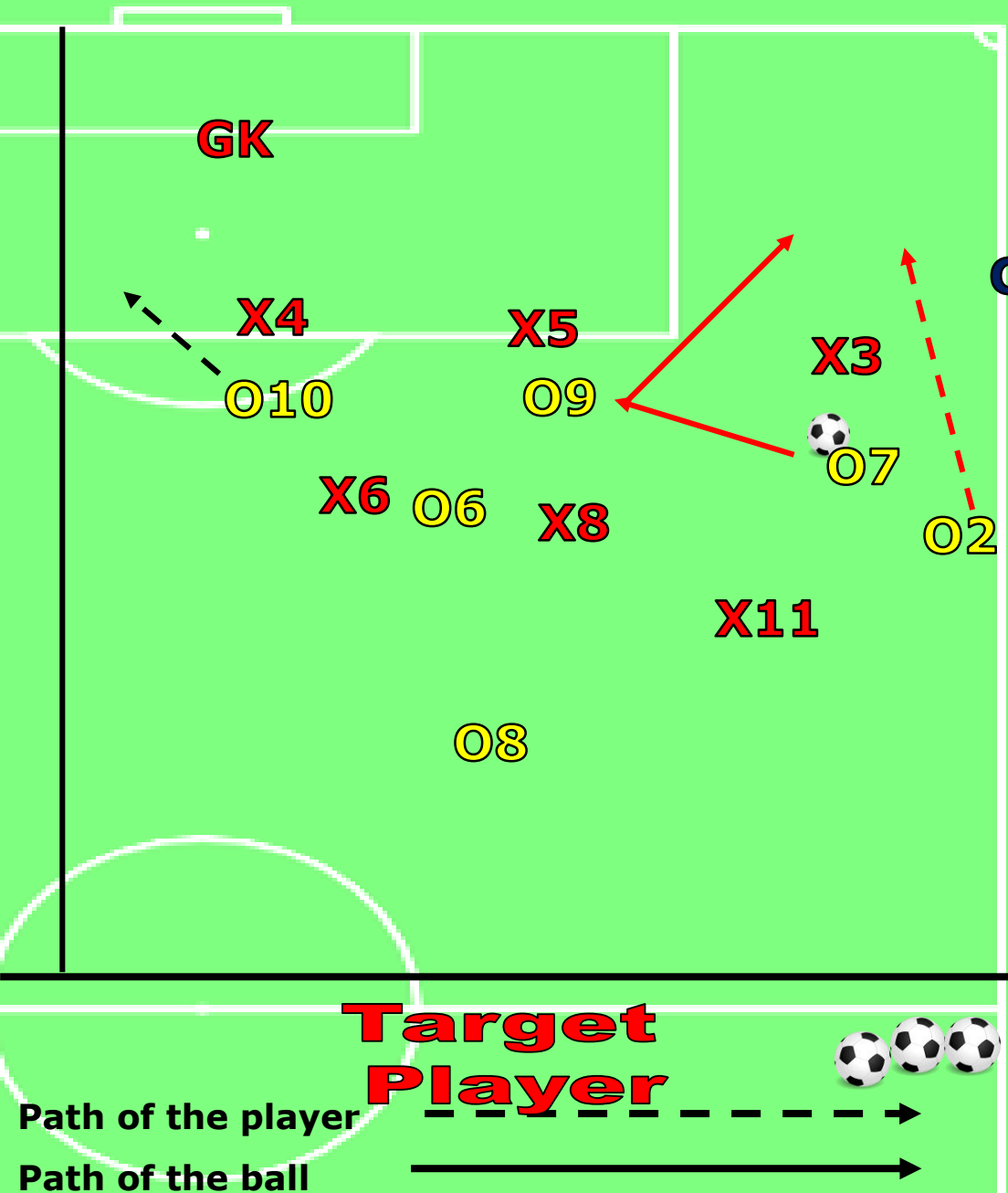
- ✓ O7 takes a positive 1st touch across X3 to create space for O2 and passes to O9
- ✓ O2 attacks X3 with an overlap and pass from O9

Secondary Players

- O10 holds off the shoulder of X4
- Movement of strikers to create space combine and develop an end product

Fringe

- **O6 & O8** Support Cover & Balance



Moment of Reflection

Encourage the winger to observe the full back and draw into the outside move then drive inside to take him on his weaker side.

Decision making as the space opens up and options change.

End product can be a shot, cross or combination play

**Target
Player**



Path of the player 

Path of the ball 

FUNCTION

RESPONSIBILITIES OF THE
WIDE PLAYER
WHEN FORCED INSIDE

Confirmation or Learning

Does the wide player

- ✓ Know how to draw the full back wide to open the inside channel?
- ✓ Understand where and where to drive across the weak side of the full back?
- ✓ Understand how to attack the penalty area with pace?

Have you

- ✓ Provided the right technical information to achieve success in the session?
- ✓ Coached **primary, secondary and fringe players?**
- ✓ Corrected faults???????
- ✓ Planned variation of scenarios?