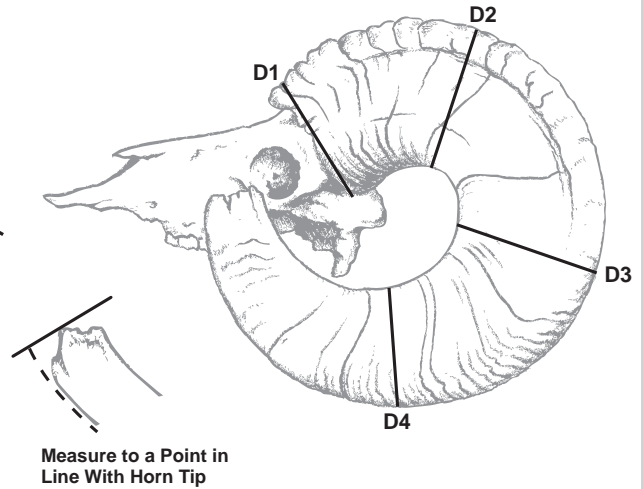
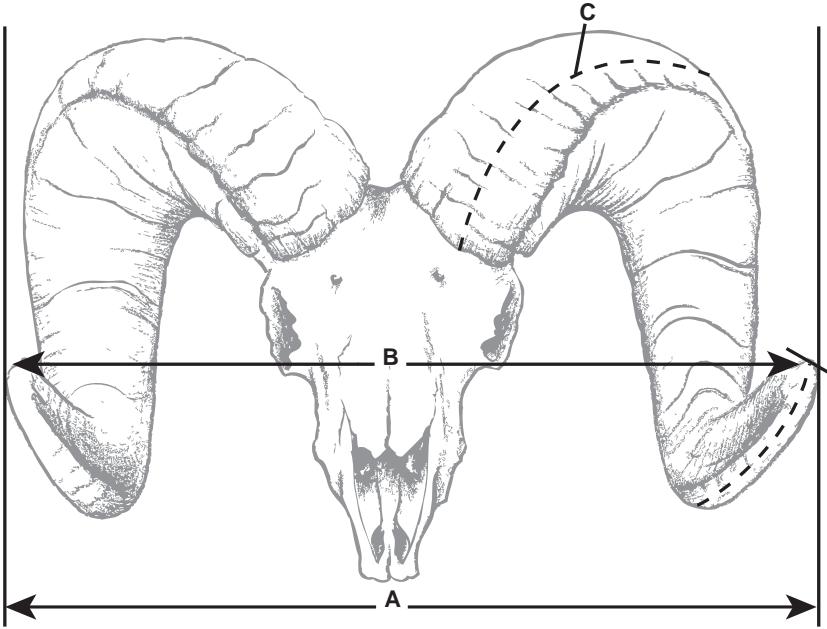




**POPE AND YOUNG CLUB®**  
 OFFICIAL SCORING SYSTEM FOR BOWHUNTING  
 NORTH AMERICAN BIG GAME TROPHIES

**SHEEP**

(CHECK ONE):	MINIMUM SCORES
<input type="checkbox"/> bighorn	140
<input type="checkbox"/> desert	120
<input type="checkbox"/> Dall's	120
<input type="checkbox"/> Stone's	120



A & B DO NOT CALCULATE IN THE FINAL SCORE BUT ARE REQUIRED		SEE OTHER SIDE FOR SCORING INSTRUCTIONS			Column 1	Column 2	Column 3
		A. Greatest Spread			Right Horn	Left Horn	Difference
B. Tip to Tip Spread							
C. Length of Horn							
D-1. Circumference of Base							
D-2. Circumference at First Quarter		Location of First Quarter Circumference: _____					
D-3. Circumference at Second Quarter		Location of Second Quarter Circumference: _____					
D-4. Circumference at Third Quarter		Location of Third Quarter Circumference: _____					
TOTALS							
ADD TOGETHER:	Column 1	Exact Locality Where Killed:*		County:		State/Prov:	
	Column 2	Hunter (Legal Name):		Date Killed:			
Subtotal		Address:		Telephone #:			
SUBTRACT:	Column 3	City:		State:		Zip:	
		Hunter's Email:		Guide's Name:			
FINAL SCORE		Remarks (Mention Any Abnormalities or Unique Qualities):					
		*Geographic location (lake, mountain, river, etc.) required for trophies taken in Canada and Alaska.					
Pope and Young® Official Measurer I.D. Number							

No part of this scoring system may be altered in any way. No part of this score chart may be altered or copied without express written permission from the Pope and Young Club. A score chart is not authenticated until signed and dated by a certified Pope and Young Club Official Measurer. No scores are official Pope and Young scores until verified and the trophy is accepted by the Pope and Young Club. All trophy entries into the Pope and Young Club's Awards Programs are subject to verification.

I, \_\_\_\_\_, certify that I have measured this trophy on \_\_\_\_\_  
PRINT NAME MM/DD/YYYYY

at \_\_\_\_\_  
STREET ADDRESS CITY STATE/PROVINCE ZIP CODE

and that these measurements and data are, to the best of my knowledge and belief, made in accordance with the instructions given.

Witness: \_\_\_\_\_ Signature: \_\_\_\_\_  
TO MEASURER'S SIGNATURE P&Y OFFICIAL MEASURER

\_\_\_\_\_  
ADDRESS  
\_\_\_\_\_  
CITY STATE/PROVINCE ZIP

Mail To: Pope and Young Club ■ P.O. Box 548, Chatfield, MN 55923 ■ (507) 867-4144 ■ www.pope-young.org

## BRIEF INSTRUCTIONS FOR MEASURING SHEEP

Measurements must be made with a flexible steel tape and recorded to the nearest one-eighth of an inch. To simplify addition, please enter fractional figures in eighths and in proper fractions. Refer to P & Y Measurer's Manual for a detailed description of measuring procedures.

- A. Greatest Spread is measured between perpendiculars, at right angles to the center line of the skull.
- B. Tip to Tip Spread is measured between tips of horns.
- C. Length of Horn is measured from lowest point in front, on outer curve, to a point in line with tip. DO NOT press tape into depressions. The low point of the outer curve of the horn is considered to be the low point of the frontal portion of the horn, situated above and slightly medial to the eye socket (not on the outside edge of the horn). Use a straight edge, perpendicular to horn axis, to end measurement.
- D-1 Circumference of Base must be measured at right angles to axis of horn. DO NOT follow irregular edge of horn. The line of measurement must be entirely on horn material, not the jagged edge often noted.
- D-2-3-4 Circumferences. Divide measurement C of LONGER horn by four, mark BOTH horns at these quarters even though other horn is shorter, and measure circumferences at these marks with the measurements taken at right angles to horn axis. Mark quarters by starting from base only.

---

## ENTRY REQUIREMENTS

1. Original scoring form completed by an Official Measurer of the Pope & Young Club or the Boone & Crockett Club.
- 2. Completed Fair Chase Affidavit.**
3. Three photos of antlers, horns, or skull (a view from the front side, a view from the left side and a view from the right side). A field photo is also requested, if possible.
4. \$35.00 recording fee (made payable to the Pope and Young Club)
5. Copy of hunting license (required for sheep).

Drying Period: To be eligible for entry in the Pope & Young Records, a trophy must first have been stored under normal room temperature and humidity for at least 60 days after date of kill. No trophy will be considered which has been altered in any way from its natural state.

COPYRIGHT © 2012 BY POPE AND YOUNG CLUB, P.O. BOX 548, CHATFIELD, MN 55923

(WRITTEN REQUEST FOR THE PRIVILEGE OF REPRODUCTION IS REQUIRED FROM THE BOONE AND CROCKETT CLUB® AND THE POPE & YOUNG CLUB).