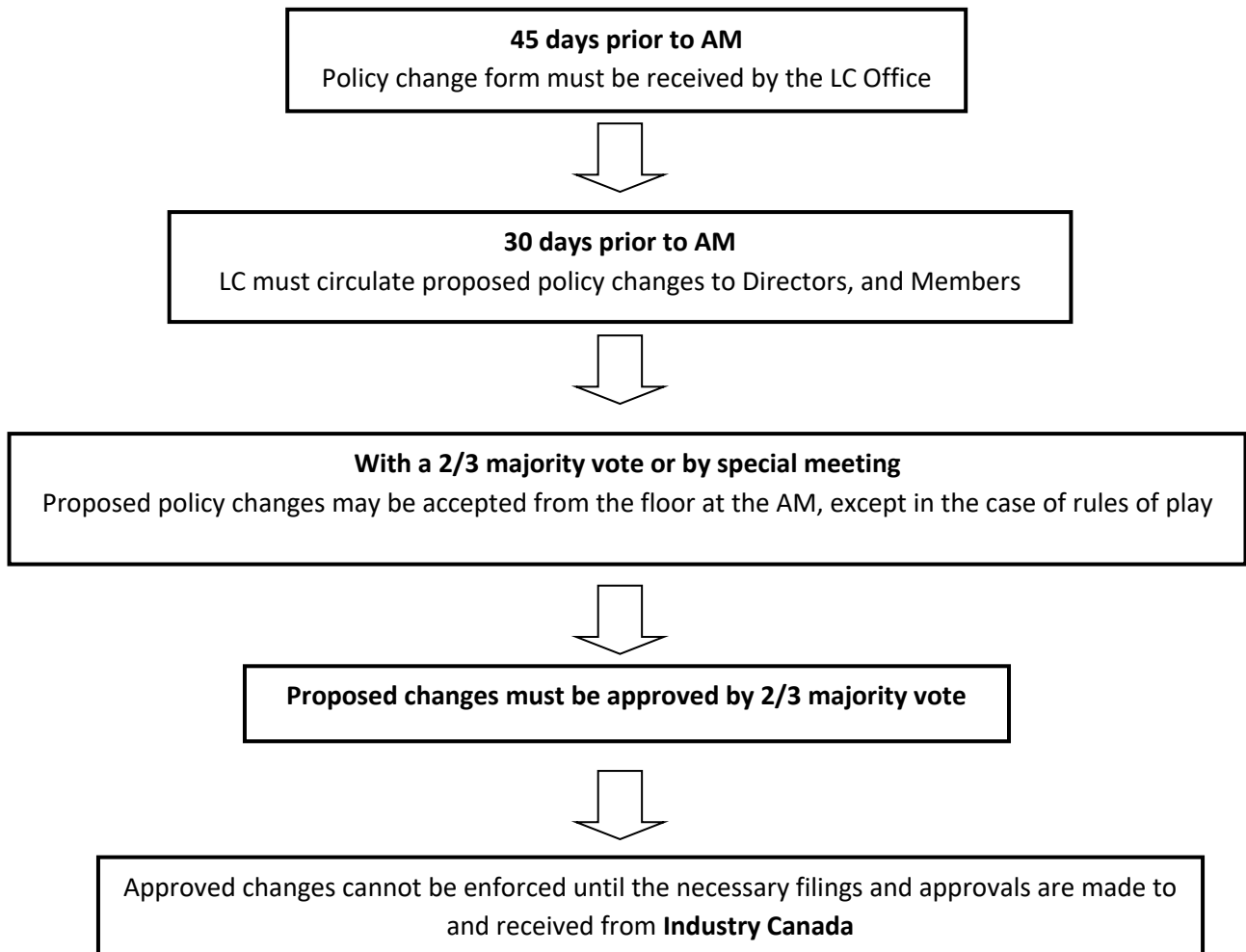


APPENDIX 25-1

POLICY CHANGE PROCEDURE

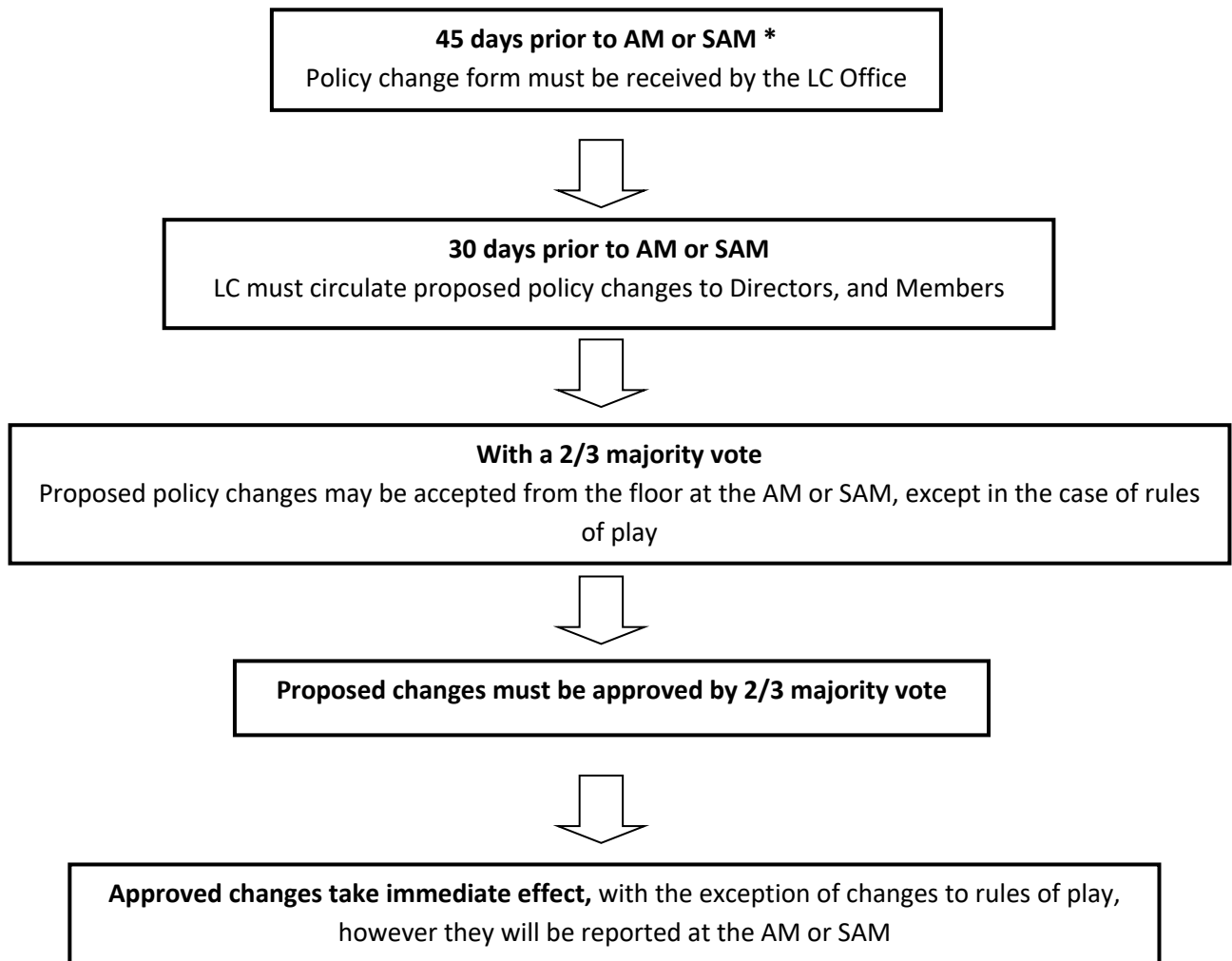
A.

- Applies to Articles of Continuance, and Bylaws.



B.

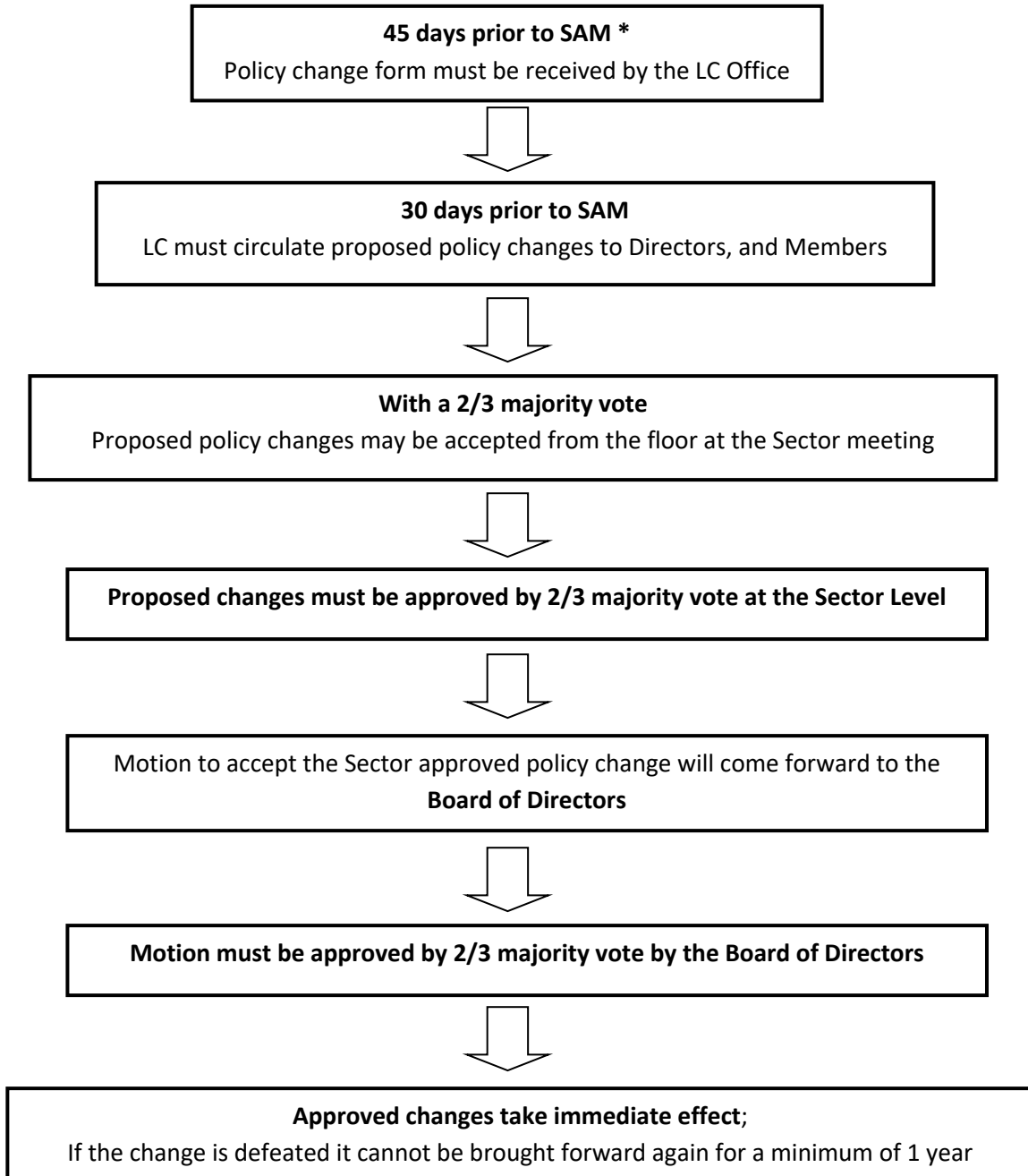
- **Applies to Regulations 3 through 17**



***In the period between the SAM and AM proposed policy changes, excluding rules of play, can be dealt with by Board E-Mail Ballot.**

C.

- **Applies to Regulations 18 through 24: Box Sector, Men’s Field Sector, Women’s Field Sector, Coaching Program, Officiating Program, National Championships.**



***At the discretion of the Sector Chair between Sector meetings proposed policy changes, excluding rules of play, can be dealt with by Sector E-Mail Ballot.**

