



# Updated- CMHA Phase 3 Safety Plan

## Memorial Arena

November 12, 2020

CMHA would ask that the City of Cranbrook consider this updated Safety Plan. Our proposal is aligned with all current Provincial Health Authority, ViaSport, BC Hockey and BCRPA regulations relating to Covid and Return to Play.

CMHA reserves the right for coaches and volunteers to remove any player from the facility that they deem to be a safety risk.

CMHA will comply with these regulations as follows:

- **Spectators / “Patrons” (see PHO on Gatherings and Events, October 30<sup>th</sup>, 2020 for definition) will not be permitted within the arena at this time.**
- **Cohort** - is a group of participants who primarily interact with each other within the sport environment over an extended period of time – e.g. series of events
- Cohorts will be kept by the respective CMHA Division Head for that level and will be available upon request.
- **Covid Ambassador** – each team (if shared practice) will name at least one Covid Ambassador who must have a visible presence. This individual will oversee adherence to the return to play plan, facility guidelines, and ensure that COVID protocols are being followed. Failure of the Ambassador to oversee adherence to the return to play plan, facility guidelines, and ensuring the COVID protocols are being followed could result in a loss of booking privileges to the renter or organization

### Practices:

- See **Appendix A and B** for permitted numbers.
- All people entering the facility and their respective roles must be recorded along with contact info for each game in the [CMHA Game Day Sign Up Form PDF](#).
- Face coverings must be worn at all times within the facility.
- Masks may only be removed by players and coaches when leaving the dressing room directly to the field of play (ice surface).
- Support Staff must remain in the designated areas within the facility as follows:



- Coaches, HCSP, and Athletic Trainers will be permitted on the playing surface.
- Volunteers will be permitted to stand at the north end of the building by the glass or in Section B behind the Visitor Players Bench. 2m spacing between volunteers must be maintained unless they share the same home.
- All other areas within the stands will be off limits at this time.

#### Games:

- See **Appendix C** for permitted numbers.
- All people entering the facility and their respective roles must be recorded along with contact info for each game in the CMHA Game Day Sign Up Form PDF.
- Face coverings must be worn at all times within the facility.
- Masks may only be removed by players and coaches when leaving the dressing room directly to the field of play (ice surface).
- Support Staff must remain in the designated areas within the facility as follows:
  - Coaches, HCSP, and Athletic Trainers will be permitted on the benches.
  - Volunteers will be permitted to stand at the north end of the building by the glass or in Section B behind the Visitors bench. 2m spacing between volunteers must be maintained unless they share the same home.
  - Penalty Box attendants, Time/Score Keepers will be permitted in the penalty box area.
  - Videographers will be permitted to sit or stand in Section A behind the Home Players Bench.
  - All other areas within the stands will be off limits at this time.

#### Arrival:

- It is preferred that all players arrive at the arena fully dressed or as close to fully dressed as possible.
- Teams will only be allowed to enter the arena 15 minutes prior to their scheduled ice time and will have to exit the arena within 15 minutes from the end of the scheduled ice time.
- Strict adherence to the 15-minute guidelines will be required to not negatively impact other user groups. Failure to do so will may affect CMHA's ability to book future ice with the City.
- Participants will arrive wearing a mask or facial covering. Masks must remain on at all times (including in dressing rooms).
- Participants will line up at the **North East arena entrance** accessed from the East parking lot.
- Each Team will provide a safety check-in person stationed inside the Entrance to perform the following:
  - Record the name and contact info of everyone entering the arena and hold onto the records for 30 days for contact tracing.



- Each player will only be permitted to enter if:
  - Temperature is within the acceptable range.
  - Completed TeamSnap Health Check or Fillable Game Day Form.
- Once check-in is complete, players will proceed in single file directly to the appropriate dressing room while maintaining social distance.
- To minimize physical contact, coaches and on-ice volunteers will not tie skates for participants within the facility but players may get assistance from approved masked volunteers.
- Players are each permitted to bring in one or two water bottles that must be filled at home. Bottles must have the players name clearly displayed.

#### Exit Ice and Building Procedure (North Exit):

- At the end of the session, participants must exit the ice, single file, to their assigned dressing rooms. Participants must leave through the North Exit adjacent to the exterior Zamboni door within 15 minutes, so the next group can enter the building.

#### Entry to Ice (field of play):

- Safety check in person will direct participants to the appropriate areas once inside the facility.
- Masks may be removed and left in the dressing room immediately prior to putting on helmets and heading to the ice.
- Players should exit the dressing room single file maintaining social distance.
- Players will line up on social distance markings and will enter the ice surface when notified.

#### On-Ice Procedure for Non-Cohort Groups

- See **Appendix D**
- For non-cohort hockey there is a maximum of 20 players total and 4 coaches permitted on the ice at one time.
- No game play permitted – practices and skill sessions only
- Players benches are not to be used by non-cohort groups
- All drills will utilize social distancing and will require groups to be broken into stations to minimize physical contact.

#### On-Ice Procedures for Cohort Groups

- See **Appendix E**
- Game play permitted.
- For Practice play, a 56-person limit will be permitted on the ice for cohorted groups.



- Bench use is permitted.
- Coaches, trainers, or supports staff must wear a mask while on the player's benches and when physical distancing cannot be maintained.

#### Coaches, volunteers, officials:

- Will provide contact tracing info, have temperature checked, and confirm they are symptom free.
- Will do their best to ensure that social distancing rules are followed when required.
- Will wear a face covering when social distancing can not be achieved. This applies to assisting players with equipment, attending to injured players, etc.
- Will put on skates and/or equipment within the designated approved areas.

#### Suspected illness with any Covid related symptoms:

- All safety volunteers are encouraged to maintain social distancing. If for any reason they are required to be closer than 2 meters from a potentially ill participant, they will be required to wear a face mask, gloves and eye protection.
- Participant will be asked to go directly off the ice and up into the isolation area located in the warm viewing room at in the upper level of the southeast corner of the building.
- Parents will be contacted and be asked to pickup and take their child directly to the hospital for professional evaluation.
- If a positive Covid case is reported, CMHA will contact Interior Health and follow their guidance.
- All decisions relating to a positive Covid case will be made by Interior Health only.

#### Additional Facility Information:

- Sanitization stations with hand sanitizer will be located at each check-in station and within pre-ice areas.
- South end public washroom usage will be permitted but will be restricted to only 2 people per washroom at a time.
- Dressing room showers will remain off limits.

#### Additional Safety Rules:

- **NO SPITTING (including water from water bottles) anywhere inside of the facility including on the ice surface.**
- No sharing of water bottles.
- No horseplay of any kind.
- Any player that feels sick or unwell **MUST** stay home.



Discipline Policy:

- A failure to comply with any of these guidelines will result in the following minimum disciplinary measures:
  - First Offence - Verbal Warning
  - Second Offence – Player and/or Teams will miss the next scheduled ice time and parents will be notified.
  - Third Offence – Player(s) will be removed from participation indefinitely and the matter will be brought to the CMHA Discipline Committee for disciplinary action.



## Appendix A- Practice Essential Staff (age 9 and up)

- 18 Players
- 6 Coaches
- 1 Manager
- 1 Hockey Canada Safety Persons (HCSP)
- 1 Covid Ambassador
- 2 Covid Screener Volunteers

### **29 Total**

- The maximum group size for all City of Cranbrook arena's is 65 (full participants plus essential event staff).
- Arena Staff are not included in the (65) total number.
- Teams are encouraged to minimize their group sizes as much as possible. The numbers above are maximums, and roles should not be replaced with other non-essential roles to push the limits to 65.



## Appendix B- Practice Essential Staff (Under 9 and Beginner Female Group ages 5-13)

- 18 Players
- 5 Coaches
- 1 Manager
- 1 Hockey Canada Safety Persons (HCSP)
- 1 Covid Ambassador
- 2 Covid Screener Volunteers
- **4 certified Trusted Adult off-ice volunteers so long as the following is met:**
  - Current Criminal Record Check required (free of charge through CMHA link).
    - <https://justice.gov.bc.ca/eCRC/home.htm>
    - ACCESS CODE: GP3KRNPES
  - Respect in Sport for Activity Leaders must be completed (cost to be borne by the volunteer).
    - <https://bch.respectgroupinc.com/>
  - A minimum of 2 Adults Must always be present when in the presence of youth.
  - Must remain in the designated viewing area as determined by the facility

### **32 Total**

- Shared Practices will follow the same guidelines (x2) but will be permitted to have 1 additional Covid Ambassador for a total of 3 Covid Ambassadors permitted.
- The maximum group size for all City of Cranbrook arena's is 65 (full participants plus essential event staff).
- Arena Staff are not included in the (65) total number.
- Teams are encouraged to minimize their group sizes as much as possible. The numbers above are maximums, and roles should not be replaced with other non-essential roles to push the limits to 65.



## Appendix C- Game Essential Staff

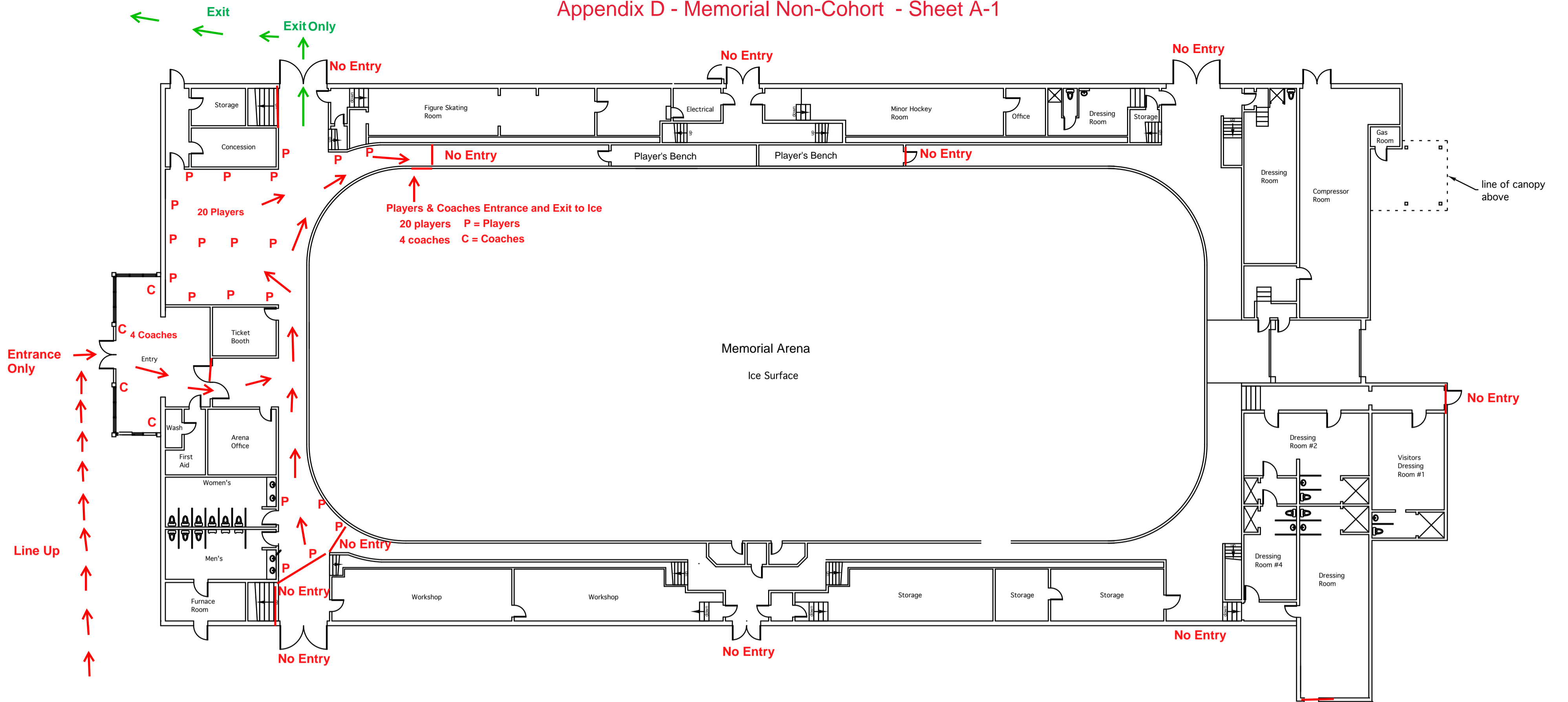
- 40 Players – 20 per team
- 8 Coaches – 4 per team
- 2 Managers – 1 per team
- 2 Hockey Canada Safety Persons (HCSP) – 1 per team
- 2 Covid Ambassadors (Home Team)
- 1 Time keeper (Home Team)
- 1 Score clock operator (Home Team)
- 2 Penalty box operators - 1 per team
- 2 Video streamers – 1 per team
- 1 Referee
- 2 Linespersons
- 2 Covid Screeners - 1 per team

### **65 Total**

- The maximum group size for all City of Cranbrook arena's is 65 (full participants plus essential event staff).
- Arena Staff are not included in the (65) total number.
- Teams are encouraged to minimize their group sizes as much as possible. The numbers above are maximums, and roles should not be replaced with other non-essential roles to push the limits to 65.



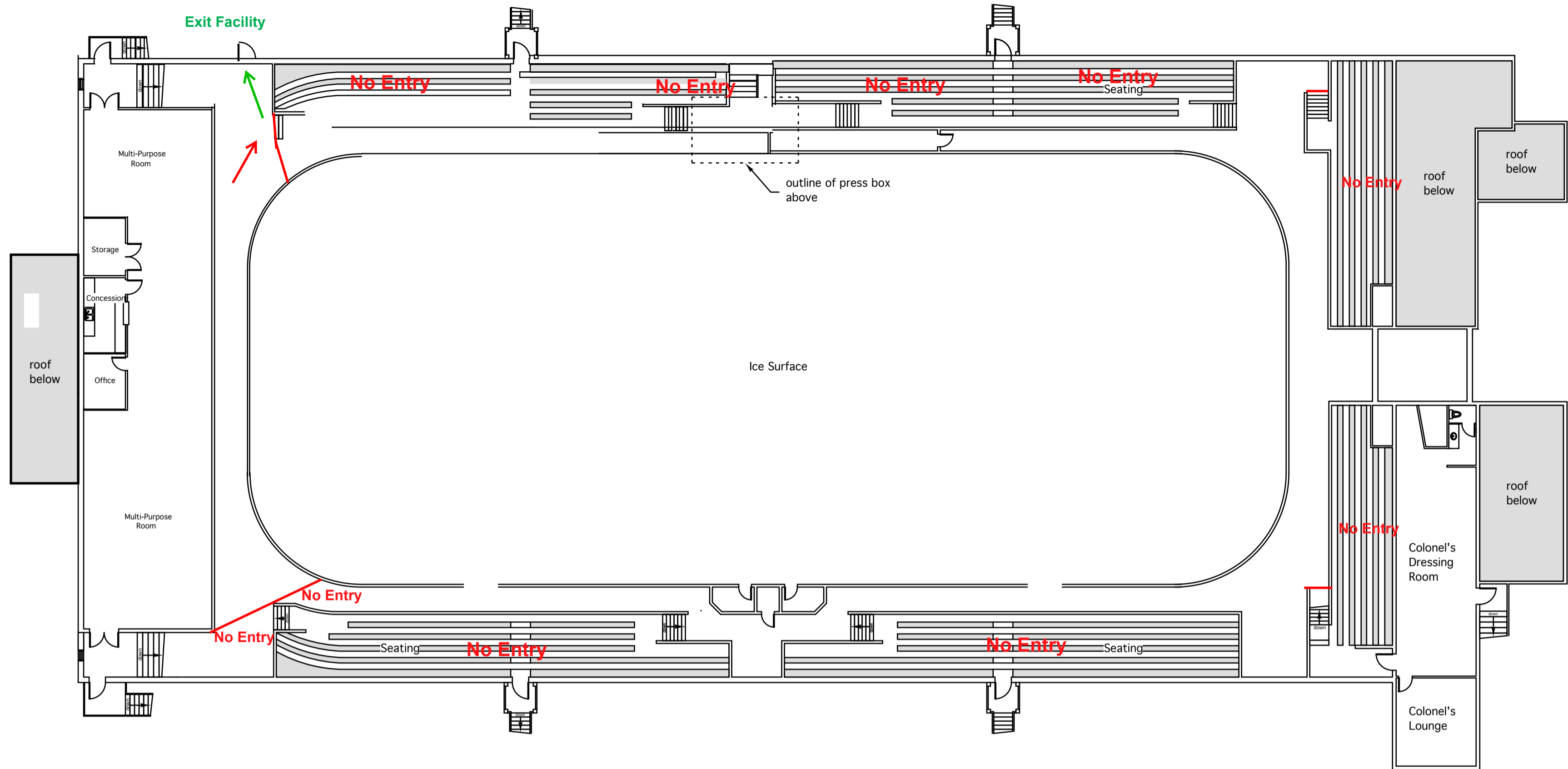
Appendix D - Memorial Non-Cohort - Sheet A-1



MAIN FLOOR PLAN

SCALE 1/16" = 1'-0"

5												
4												
3												
2												
1												
NO	DATE	DESCRIPTION	11506 Highway 3a Sanca, BC VOB 1A2 Phone: 250-223-8080 Fax: 250-223-8080	#9642 Clearview Road Cranbrook, VIC 7E2 Phone: 250-427-4578 Fax: 250-427-4578	Christine Ross Architect MAIBC	Project CRANBROOK MEMORIAL ARENA	Sheet Title MAIN FLOOR PLAN	Project No.	Date: July, 2011	Scale: 1/16" = 1'-0"	Drawn: CR & RB	Sheet No. <b>A-1</b>

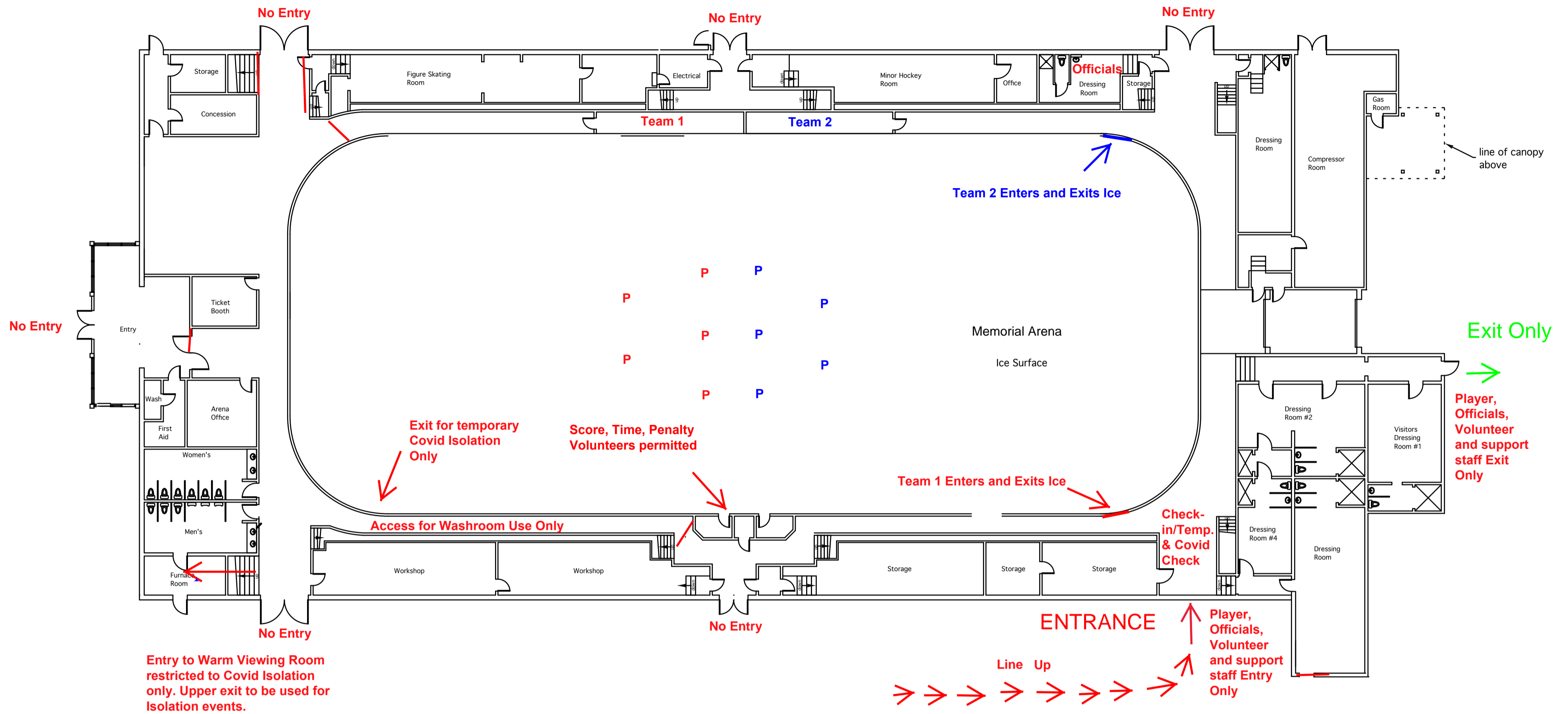


**UPPER FLOOR PLAN**

SCALE 1/16" = 1'-0"

5												
4												
3												
2												
1												
NO	DATE	DESCRIPTION		11506 Highway 3a Saanich, BC V0B 1A2 Phone: 250-223-8080 Fax: 250-223-8080	#9642 Clearview Road Cranbrook, VIC 7E2 Phone: 250-427-4578 Fax: 250-427-4578	Christine Ross Architect MAIBC  	Project CRANBROOK MEMORIAL ARENA	Sheet Title UPPER FLOOR PLAN	Project No. Date: July, 2011	Scale: 1/16" = 1'-0"	Drawn: CR & RB	Sheet No.  <b>A-2</b>

Appendix E - Memorial Cohort - Sheet A-1

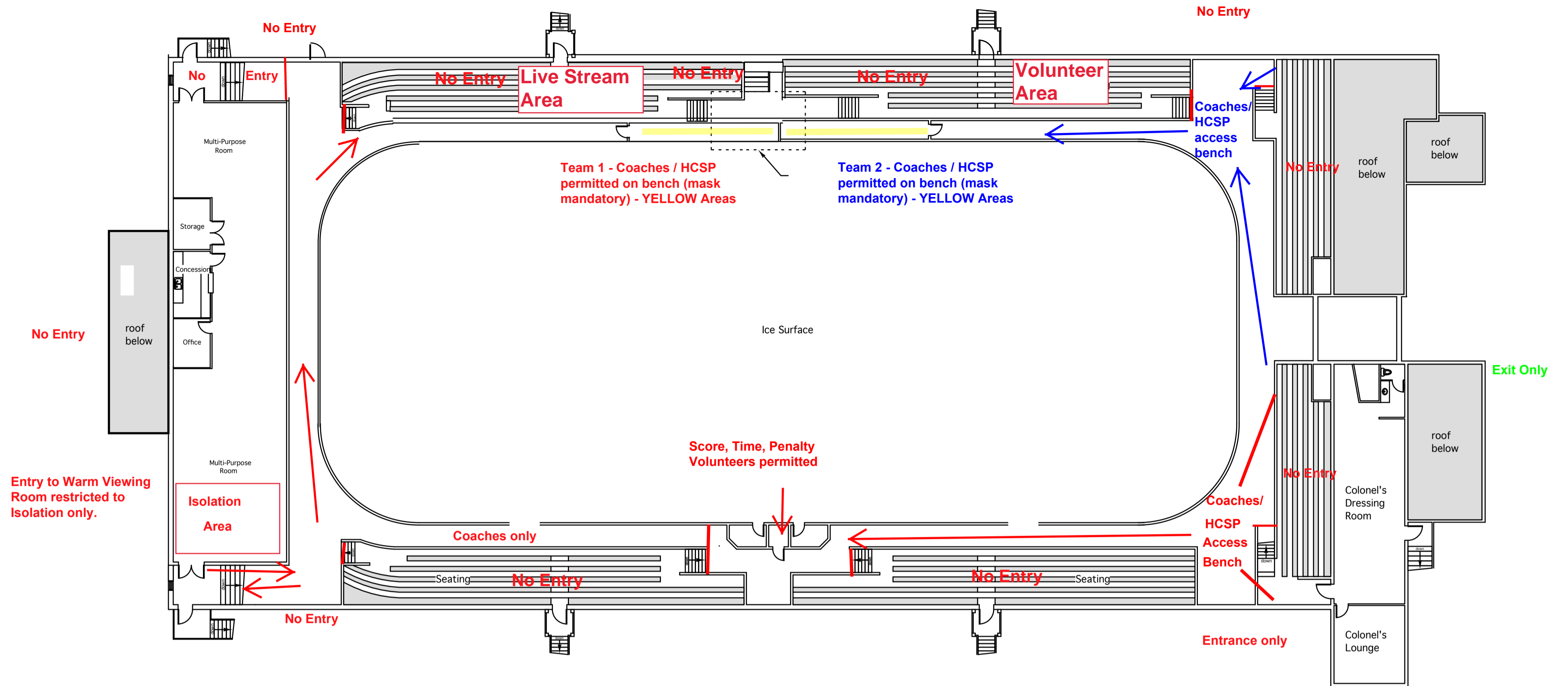


MAIN FLOOR PLAN

SCALE 1/16" = 1'-0"

5													
4													
3													
2													
1													
NO	DATE	DESCRIPTION		11506 Highway 3a Sanca, BC VOB 1A2 Phone: 250-223-8080 Fax: 250-223-8080	#9642 Clearview Road Cranbrook, VIC 7E2 Phone: 250-427-4578 Fax: 250-427-4578	Christine Ross Architect MAIBC  Christine Ross ARCHITECT	Project CRANBROOK MEMORIAL ARENA	Sheet Title MAIN FLOOR PLAN	Project No.	Date: July, 2011	Scale: 1/16" = 1'-0"	Drawn: CR & RB	Sheet No.  <b>A-1</b>

Appendix E - Memorial Cohort - Sheet A-2



UPPER FLOOR PLAN

SCALE 1/16" = 1'-0"

5													
4													
3													
2													
1													
NO	DATE	DESCRIPTION		11506 Highway 3a Saanich, BC VOB 1A2 Phone: 250-223-8080 Fax: 250-223-8080	#9642 Clearview Road Cranbrook, VIC 7E2 Phone: 250-427-4578 Fax: 250-427-4578	Christine Ross Architect MAIBC  Christine Ross ARCHITECT	Project CRANBROOK MEMORIAL ARENA	Sheet Title UPPER FLOOR PLAN	Project No.	Date: July, 2011	Scale: 1/16" = 1'-0"	Drawn: CR & RB	Sheet No.  A-2