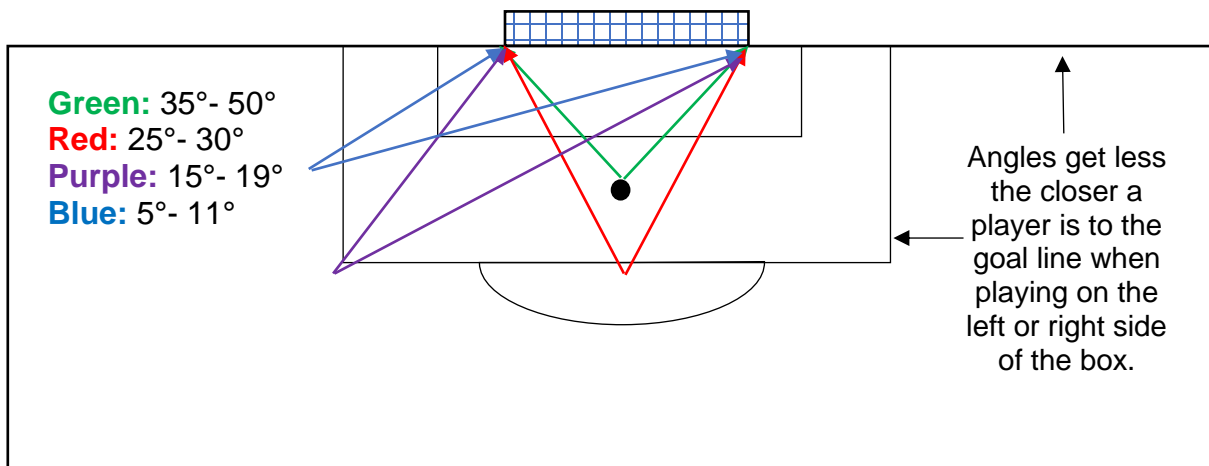




BULLETIN “BEST ANGLE ON GOAL (U11+)”



General Information

To score a goal in soccer, the soccer ball has to pass through two goal posts (and below a crossbar), past the goalline inbetween the goal posts where the goal keeper usually occupies to stop the ball. For the attacking players, the closer they are to the goal, they tend to be able to see more of the goal, regardless of the keeper being present.

In the diagram above, you can see that the best angle on goal is around the penalty spot center to the goal area. This area is referred to as the “kill-zone” where most goals can be scored from a well struck ball and/ or placed pass. When play is on the left or right side lanes and gets closer to the goal-line, the angle is less and therefore there is less of a chance of a goal. Often from this position, the ball is better passed to an attacking player who is positioned in a better angle to the goal. Here is something you can try at the next practice when you are going to be doing attacks on goal.

Place your keeper on the goalline. Have players start from between the center circle and the top of the “D”. Move your players forward towards the goal and ask your players if the spaces around the keeper are getting bigger as they move forward. They should notice as they move closer, more of the spaces in the goal open up and become larger allowing for a greater opportunity for striking and/ or placing the ball through a great pass, into those open spaces. You can also do this on the left side and ride side lanes to help players visualize space around the keeper from where they are positioned on the field.

Where players take their shots makes a difference to how successful those shots will turn into goals. The larger the angle to goal, meaning able to see more space, then better the chance of a goal.

It is important to note that just because the angle is less does not mean a player cannot place a well-struck and accurate ball that could go in. Its just more difficult in these cases compared to being in a better angle where a player can see more of the goal.