

# Outdoor Manager's Meeting

2024 Season

## Instructions for Engagement



Please mute your microphone unless prompted to speak.



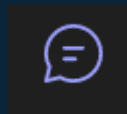
Questions are to be directed to the chat room and will be answered at the end of the powerpoint presentation.



Please type your Name, Team and Program before your question.



Use a reaction if you have an urgent comment or question.



**Meeting will start soon. Thank you for your patience.**



**2024 Canadian Futsal Nationals**  
**Men's Champion – Ontario**  
**Women's Champion - Saskatchewan**



**Eritrea**



**Canada O35**



**Canada**



**Chile O45**

# ID Nations Cup 2024

Thanks to the Teams and the unbelievable fans for an amazing 2024 Nations Cup!



# Outdoor 2024

	Men's	COED	7v7 COED	7v7 Mens	Total
# of Teams 2023	188	29	15	19	251
# of Divisions 2023	19	3	2	2	26
# of Teams 2024	<b>187</b>	<b>29</b>	<b>18</b>	<b>26</b>	<b>260</b>
# of Divisions 2024	<b>20</b>	<b>4</b>	<b>2</b>	<b>4</b>	<b>30</b>
Team Total Difference	<b>-1</b>	<b>-</b>	<b>+3</b>	<b>+7</b>	<b>+9</b>



Program Coordinator – Keenan Ince  
 Discipline Coordinator – Maureen Farrell  
 (6 month)

# League 1 AB



League1 Alberta (L1AB) is a semi-professional men's and women's soccer league in Alberta, Canada, to be sanctioned by the Canadian Soccer Association and the Alberta Soccer Association as a tier 3 league in the Canadian soccer league system.

Belonging to the League1 Canada organization, the men's division will fall below the Canadian Premier League (CPL), and both divisions will be equivalent to current pro-am leagues in British Columbia, Ontario, and Quebec. The league began in 2023 as an exhibition series and was fully launch for 2024.

Matches will be held at Broadview, Calgary West Soccer Center and Macron Performance Training Center.

## Men's Teams

## Women's Teams

Calgary Blizzard SC (new)

Calgary Blizzard WSC

Calgary Foothills FC

Calgary Foothills WFC

Cavalry FC U21

National Development Center WFC (new)

Calgary Callies United FC (new)

Calgary Callies United WFC (new)

Edmonton BTB SC

Edmonton BTB WSC

Edmonton Scottish United SC

Edmonton Scottish United SC

St Albert Impact

St Albert Impact



# AMSL

- AMSL and Reserve teams must have minimum player roster registered by May 1<sup>st</sup>.
- Premier teams wishing to challenge to AMSL for 2025 must notify in writing plus \$1000 deposit by May 1<sup>st</sup>. Late challenges not accepted.



## Men's Teams - South

Calgary Blizzard SC (Dinos)

Calgary Callies United FC

Calgary Villains FC

Lethbridge FC

## South Reserve Teams

Calgary Blizzard SC Pr

Callies United Pr FC

CJSC Sportif

Lethbridge District

## Men's Teams - North

Edmonton Green & Gold

Edmonton Drillers

Edmonton Scottish United SC

St Albert Impact



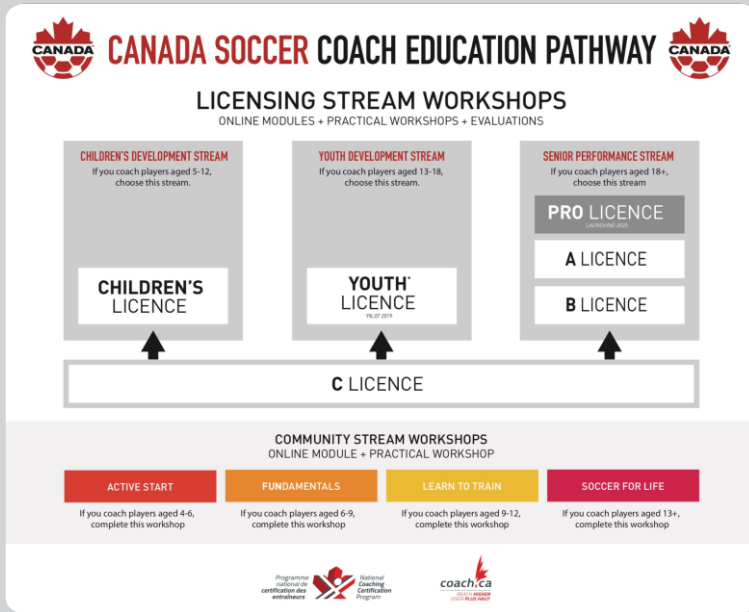
# Code of Conduct

All Members should expect to be treated fairly in all matters. Members shall not discriminate against other Members by means of different, unequal, or inconsistent treatment applied to individual members.

No Member shall harass another Member by actions that include, but are not limited to, unwelcome remarks, invitations, requests, gestures, or physical contact that, whether indirect or explicit, has the purpose or effect of humiliating, interfering with, or creating an intimidating situation for that other Member. Harassment shall be considered inappropriate behavior, be it ethnic, religious, or sexual in nature.

The interaction or involvement of Members under the jurisdiction of the Association shall not result in threats, intimidation, or inflicted physical distress between such Members, whether implied or explicit.

# Coaching Qualifications



All team staff listed on a roster are required to obtain Criminal Record Check Clearance. For AMSL Teams this must be submitted prior to the start of the season.

ASA will remove from rosters all team officials who did not meet this requirement

Failure to meet these will disqualify your team and can make you subject to a fine that can be as high as \$2,500.



# Coaching Requirements: Open Division Teams

Teams with players under the age of 18 years old must have a minimum of two coaches 18 years and older present at games and practices.

It is recommended that at least one coach per group be trained, at minimum, at the appropriate NCCP Coaching level.

For the safe training of players under the age of 18 years, **Rule of Two** maintained at all training sessions. All team officials will be required to meet the Canadian Police Information Centre requirements, (CPIC).

All coaches with registered players under 18 years old **MUST have a valid CPIC including Vulnerable Sector search on file with their district/club.**

For this purpose, a CPIC clearance is valid for a maximum of 36 months.



# 11v11 Program

## Division 2

Teams winning group are eligible for the Provincial Berths AND for Promotion to Division 1.

## Division 3

Teams winning group are eligible for the Provincial Berths AND for Promotion to Division 2. Teams who finish in 2<sup>nd</sup> earn promotion only.

Updated:



Group winner is also eligible to challenge for Division 1 by the eligibility timelines.



# 11v11 Program Facilities

## Soccer Center #1

Closed for the season – under construction for new dome.  
Parking Lot changes.

## Ernest Manning

Closed for re-turfing May 2024. Opening June 2024 with new,  
higher quality turf.

## Glenmore 1

More gameplay expected at G1 when new track opens.

## Shouldice Encana

Bubble to be brought down approx. May15-31. Games prior to  
May 15 scheduled at Encana will be played indoors.



# 11v11 Program Guest Players

11v11 Division	Eligible Guest Player Option
Men's Open	Club Teams – Lower Division Club Player Affiliated Team – Lower Division Affiliated Team Player Independent Teams – O35 or O45 Registered Players
Men's Masters	Lower Division Masters Player Any Over 45 Registered Player
Men's Over 45	Lower Division Over 45 Registered Player Masters Division Player over the age of 45 Masters Premier to O45A only. No Masters Elite

# 11v11 Affiliate Teams

Independent Open Division Teams may affiliate with another **Independent Open Division Team** for the purpose of guest players. **Club teams** are not eligible to affiliate to another team.

Teams will need to identify their affiliate by **July 31, 2023**, or prior to their 1<sup>st</sup> game using a guest player from that team, whichever occurs first.

Teams may not change their affiliation during the season.

A lower division affiliate cannot challenge their higher division affiliate for their league position through Promotional Challenge.

Guest player restrictions remain in place – 6X per player from lower division team to higher division team.

Affiliation remains in place for at minimum 2 consecutive seasons of registration.



# 7v7 Program

- Red carded players must leave the playing area immediately and are **NOT** to be replaced by another player – the team plays a man short for the remainder of the game.
- Goalkeepers will have no restrictions as to how they distribute the ball – neither from a goal kick, nor in regular possession.
- Free kicks are indirect/direct when applicable and the wall should be set up 6 yards/5 meters away
- Substitutes
  - Up to 4 at a time
  - Over 45 – Unlimited
  - Players to be ready at half line – Enter the field with permission in a break in the play
- 30 Minute Halves – growth in the program results in tighter timelines and aligns with winter season procedures.
- No Guest players to / from 11v11 program. Players may be registered in both programs.

Note:

# 7v7 Program Guest Players

7v7 Division	Eligible Guest Player Option
Men's Open	Registered 7v7 Open Mens or Over 45 7v7 Players
Over 45	Registered O55 7v7 Player
Over 55	Registered O55 7v7 Player
COED	Registered COED 7v7 Players (Either Red or Blue)

## 7v7 Program O55

- Teams are permitted to register up to 3 players between 50-54.
- Up to 3 players per game may be 50-54. This may be a blend of registered and guest players.



Recreational

Ultra Recreational

# Coed Boarded

Recreational and Ultra Recreational teams cannot register a player who is currently registered in the AMSL, League 1, or Collegiate level play.

## Restrictive Movement

- The team and the player are responsible to ensure that they are eligible to play as a guest player.
- Teams are eligible to have up to 4 guest players in a match.
- Players may be a guest player 6 times per team in a season **within** the division.
- All divisions will use the **Fairness Model**.

### Fairness Model:

- The winning team will play one player short when a goal differential reaches 7.
- When/If the goal differential is reduced to 5, the teams return to even strength.
- Teams must still maintain their gender ratio of players.

COED Boarded	Eligible Guest Player Option
All Divisions	Registered players within your division (across A and B)



# Rescheduling

The City of Calgary field return policy is a minimum of 30 days notice. This includes indoor and outdoor venues.

This means that the league must return an unused field more than 30 days prior to the permit date otherwise the league is charged for the field's usage.

CUSA is also charged for every amendment to the field permit.

As a result, the [Rescheduling Policy and Procedure](#), Reschedule Charges and Forfeiture Fines have been updated to reflect these changes:

- More than 30 Days – No Charge
- Less than 30 Days but More than 3 Business Days - \$150.00
- Less than 3 Business Days - \$300.00

The more games you move in May and June to later in the season can, and usually does result in too many games in late August and September.



# Every team is responsible for having two kits.

**Coed Teams** may use pinnies as 2<sup>nd</sup> kit

**Home Teams** are ultimately responsible to have 2<sup>nd</sup> kit available at all games.

**Visitor Team** who wears a Kit that creates a clash (i.e. not one posted online) will receive 1 warning before future discipline actions that may include forfeitures.



## Proper Kits

2<sup>nd</sup> set of jerseys in opposite color from primary set. i.e. black and white.

All jerseys are numbered

Each player has their own kit

# JERSEYS (KIT)



## Unacceptable Kit

2<sup>nd</sup> set of jerseys do not have numbers

Pinnies, duct tape

Players sharing jerseys with subs

Jersey's worn inside out

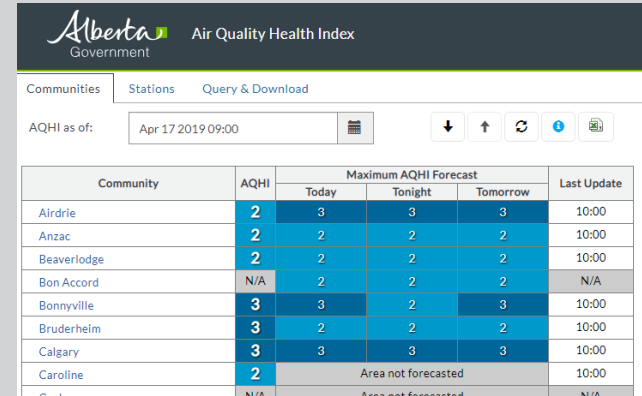


# ASA Air Quality Monitoring

Guidelines exist for assessing air quality at local fields and awareness of potential health impacts. They use Air Quality Health Index (AQHI) to determine if games are to be played.

<http://airquality.alberta.ca/map/>

AQHI 7 or above games are to be cancelled



The screenshot shows the Alberta Government Air Quality Health Index website. The page title is "Air Quality Health Index". There are tabs for "Communities", "Stations", and "Query & Download". The "AQHI as of:" field is set to "Apr 17 2019 09:00". Below the tabs is a table with the following data:

Community	AQHI	Maximum AQHI Forecast			Last Update
		Today	Tonight	Tomorrow	
Airdrie	2	3	3	3	10:00
Anzac	2	2	2	2	10:00
Beaverlodge	2	2	2	2	10:00
Bon Accord	N/A	2	2	2	N/A
Bonnyville	3	3	2	3	10:00
Bruderheim	3	2	2	2	10:00
Calgary	3	3	3	3	10:00
Caroline	2	Area not forecasted			10:00
Edmonton	N/A	Area not forecasted			N/A





# CSA Severe Weather Policy

When thunder roars, go indoors!

Change from 30/30 lightning rule.

Once thunder is heard, quickly get to a safe location.

- [CSA Lightning Policy](#) (Revised July 2017)
- [Environment Canada Video – Lightning Safety On The Soccer Field](#)
- [CUSA Severe Weather or Air Quality](#)

# Facility Status Tool



CUSA website

Updated

4:00 PM weeknights

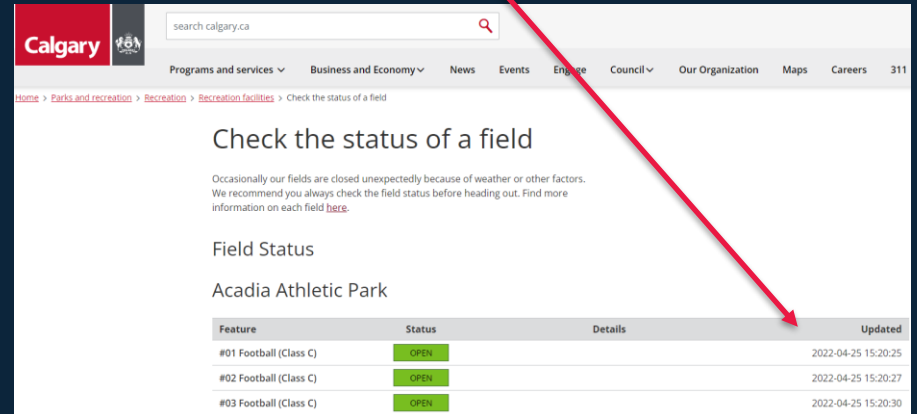
9:00 AM and 1PM weekends

Once closed cannot open that day

AT fields – check 2 hrs before KO on weekends

City of Calgary website

Date shown may not be a current date. Status changes only if condition changes.





# Respect the fields Respect the Neighbors

Your team's behaviour on and around the pitch can impact the league's permits.



Actions on field are still in a public space. Bylaw tickets have been issued to players as a result of complaints from the public.



# City of Calgary 311



Tom Brooks July 20, 2018

Date closed for Season: July 21, 2018

Reporting the field conditions to 311 with photos does make a difference. Remember you are a taxpayer and 311 is for taxpayer concerns!



# Referees

## Current status in YYC

- Sr Officials are still down in numbers
- Growth is in new, young officials (120+).
- Recent trends noted in leagues and by officials is language, actions and behaviours from players to officials.
- All referees are amateur and will have differing levels of skills and experience. Much like players, referees cannot learn without in game experience.
- Currently insufficient referees to offer AR's in non-provincial divisions.
- Abuse of officials will not be tolerated by CUSA or ASA.





# At The Field Decisions

## No Referee

- If AR's were assigned Sr AR may take middle, home team to provide AR
- If Teams agree on alternate official – make notation and sign game sheets before game that results count
- No game – match rescheduled

## Player identity questioned

- Request that the official have player in question sign the game sheet – full signature, not initials.
- Player allowed to play in match



# Season Preparation



How to be prepared for first game.

# Player Registration Process

Player registration is online only. Team managers can initiate player registration using one of the following;

- Invitation Email
- Registration Link
- Invite Code

Players are charged this fee at the beginning of each summer season. They will be charged a \$38.85 membership fee by Alberta Soccer when registering. Players who participated in Nations Cup have already paid this fee for 2024.

Player cards can be paid online while registering. All online payments must be paid via a credit card.

Registered players will appear on the roster on the CUSA Website and on pre-printed game sheets.

After registering, player cards can be picked up at the CUSA office during office hours.

You need **12 registered players** before your first game.

## Extended Hours

Saturday May 4 – 10am to 2pm

Monday May 6 – 7pm Close

Tuesday May 7 – 7pm Close

Wednesday May 8 – 7pm Close

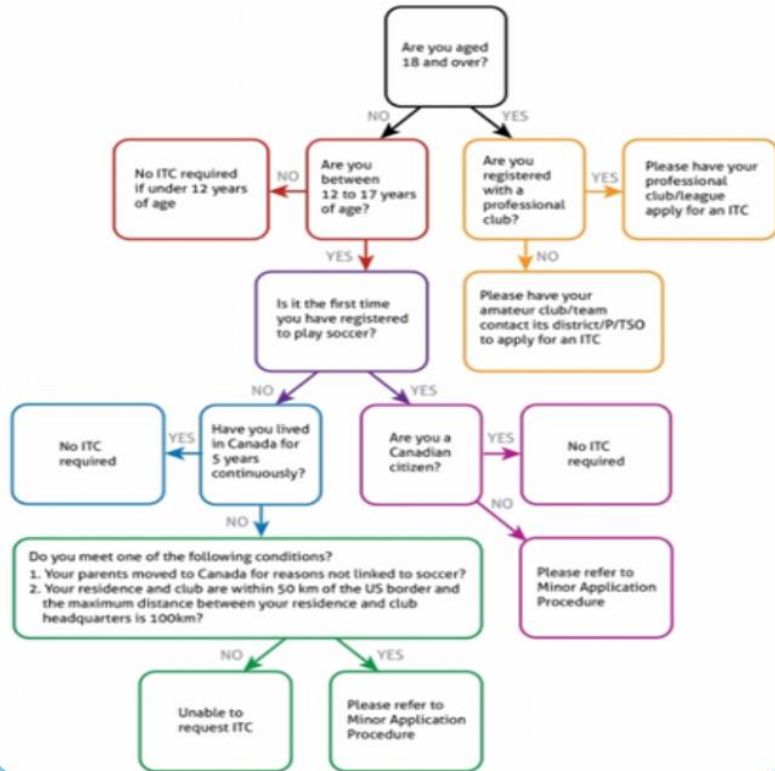
Thursday May 9 – 7pm Close

Friday May 10 – 5pm Close

# Player Releases



## International Transfer Certificates (ITC)



## Which Release?

### Arriving from outside of Calgary

- District Release

### Arriving from another Province?

- Provincial Transfer Application

### Arriving from the United States

- US Release Form

### Arriving from Outside USA or Canada

- CSA Transfer Form

If your player received a release from Canadian Soccer to train or play internationally then they need a release back to Canada before resuming play here.

If the player went to for a tryout (professional or semi professional) outside of Calgary then yes, they would need a release and may need to be reinstated as an amateur.



# CUSA ID Cards

All players and team officials **must** have a CUSA issued ID card to present at the field for each game they appear on the game sheet.

To be at the team bench an ID card **must** be presented to the match officials prior to KO.

A player, who is also a team official, can have 2 cards, 1 as a player and 1 as a Team Official. However, if you choose only to have one card and receive a suspension, you will not be eligible to get an additional card until the suspension is served. (existing rule).

Player cards are club specific.

One card per program may be required.

**\$20 new card \$10 if old card is returned**



ID#: **4157**



# Player Card Check Process

- The referee will complete the player card check for every individual on the field or in the technical area.
- Player/coaches should present both a player's card, and a coach's card.
- Once all players have been checked, the official will retain the bundle of player cards.
- The official will keep the player card of anyone who is dismissed from the game to be submitted to the league office with a misconduct report.



## Questioning the Identity of an opponent?

- Ask that the official have the player in question sign their full name (not just initials) on the back of the gamesheet.
- Player will be permitted to play in the game, CUSA administration to review and follow up.

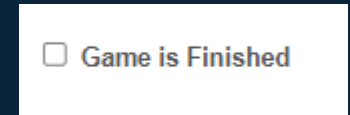
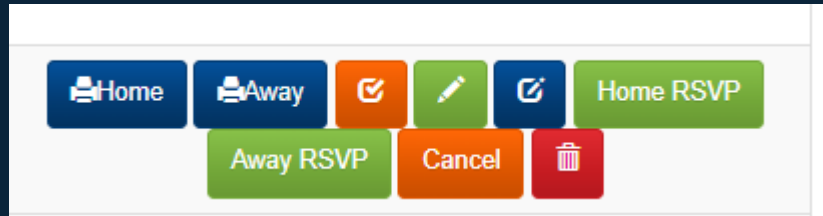
# Game Sheet Printing

CUSA is using of the pre-printed game sheets from RAMP.

- Pre-filled with player name, CUSA ID number, and jersey number
- 1 copies required for each game
  - Each team will take a photo of the gamesheets for their records. Original copies are submitted to CUSA by the official.
- Easier to read for officials and CUSA administration
- Faster game statistics input
- Printer problem – CUSA has [blank game sheet](#) on webpage under forms



# Score Entry



**For best results – have players register at least 24 hours prior to game time**

# GAME SHEET INFORMATION

---

After a game is over ensure that the information on the game sheet is correct. The once they are signed by the official and received by office, the information is considered accurate.

Review:

- Who received a card
- Who scored
- Who played/did not play
- Who were guest players
- Team Officials at game
- If an opposing team has challenged the identity of a player

**Want your team stats and results updated immediately?**

Did you know that either team coach can log in following game to enter results for up to 4 days after the game.





# Fair Play Points

The Fair Play Team Award is intended to foster the spirit of fair play for the competition. A team includes all players, coaches, and other team officials on the team roster.

All teams start off the game with a Fair Play Score of 10.

Demerits can range from -2 to -25 depending on infraction.

Teams may earn merit by submitting a [Referee Evaluation](#) within two weeks of the date of a game.

Teams are expected to Average 6 Fair Play Points per Game, including any earned demerit points. Does not include Referee Evaluation points.

Failure to meet these standards may result in higher Fair Play expectations in future seasons.

Teams may be invited to a Discipline Committee to provide action plan for improvement.

At the completion of the season, the 2 teams with the top fair play score for their division split (65/35) the Fair Play Pool for their division.

# Discipline Records



Tracking of accumulation of Yellow cards remain with the team/player to be aware. Cards are verified on the website as the game sheets arrive in the office.

Threats of violence, excessive abusive language or contact to an official will be sent to Alberta Soccer for their discipline panel to adjudicate. You will be suspended from ALL Soccer Activities until the hearing is held – playing, training, coaching and officiating.

# Discipline Update

- Concerning trends
  - 3<sup>rd</sup> man in an altercation
  - Mass confrontations
    - Players and coaches leaving the bench
  - Disguised Identity
  - Continued poor behavior following ejection



## Following a Red Card

Players must gather their belongings quickly and leave the field. Players must be out of sight of the official. Continued verbal abuse following ejection will result in additional sanctions.

## Set your team up for Success

- Have game sheet fully completed before presenting to the official.
- All individuals in the technical area must be on the game sheet and present a CUSA card.
- Ensure a red carded player leaves the field in a timely manner and does not continue to dispute with the official.

# Discipline Rule Reminder

Believe an opponent is not who is listed on the game sheet?

Request that the official have the player sign the game sheet (both names in full). CUSA Discipline will follow up from there.

Team short players, tempted to use another player's card?

Discipline starts at:

- 12 months All of Soccer for player
- Additional penalties to team \$\$
- Coaches \$\$ + time



# Player Indebtedness No Forced Loyalty



The time period that a club/team can hold a player accountable for past fees, while allowing the player to continue to play, is the **past season**.

- Club must have a **written record** between club & player on amount of fees & payment agreement. Emails or text count.
- A verbal agreement is not sufficient
- Agreement to be renewed each season of play.
- For a player's registration or transfer to be blocked due to indebtedness to a club the indebted club must provide the league with a list of the players to be locked prior to the commencement of the registration period for that season.
- **When a player account is locked it can no longer be for a player to sign with the club that requested the lock unless:**
  - **Past fees are paid in full**
  - **Payment plan has been reached**
  - **Outstanding debt has been forgiven**



# Team Checklist

- ✓ Check [Field status](#) on game day to ensure field is open
- ✓ Register players and coaches
  - ✓ U18 players – require 2 coaches with CPIC
- ✓ Physical ID cards required
- ✓ Two sets of numbered uniforms
  - ✓ Uniforms listed on website
  - ✓ Teams to wear colours as shown
  - ✓ Home team changes when conflict
- ✓ Print 1 copies of game sheet/game
  - ✓ All Coaches listed on game sheet
  - ✓ [Blank sheet](#) under forms if you cannot print from RAMP
- ✓ Home team to provide game balls
- ✓ Teams to provide AR's when not assigned or not available.
- ✓ Check your game sheet at field for record of cards and goal scorers
  - ✓ Yellow card suspensions automatic after 3<sup>rd</sup>, 6<sup>th</sup> & 9<sup>th</sup>
  - ✓ Red card discipline details can be received from office.
- ✓ Complete the [Referee Evaluation](#) within 14 days of the game.
- ✓ [Log into RAMP](#) and enter your match results

BFL CANADA <

Insurance  
Services Inc.

Insurance company

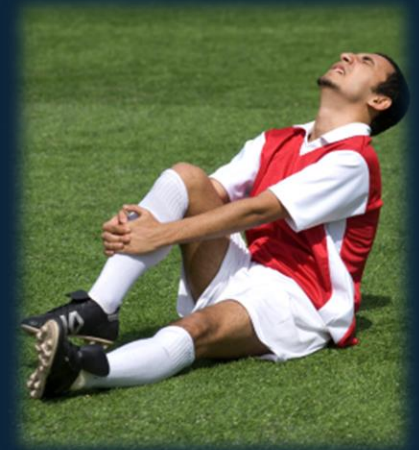


# Insurance

Alberta Soccer covers its Members with Commercial General Liability, Sport Accident and Excess Travel (out-of-country is now a mandatory purchase) [Insurance](#) protection.

30 days from Injury to report it with Insurer.

**Renting a training field**, need to show insurance? Contact CUSA and we can arrange for a certificate from insurer.



# Concussion Recognition Tool

## Pocket CONCUSSION RECOGNITION TOOL

To help identify concussion in children, youth and adults



### RECOGNIZE & REMOVE

Concussion should be suspected **if one or more** of the following visible clues, signs, symptoms or errors in memory questions are present.

#### 1. Visible clues of suspected concussion

Any one or more of the following visual clues can indicate a possible concussion:

- Loss of consciousness or responsiveness
- Lying motionless on ground/Slow to get up
- Unsteady on feet / Balance problems or falling over/Incoordination
- Grabbing/Clutching of head
- Dazed, blank or vacant look
- Confused/Not aware of plays or events

#### 2. Signs and symptoms of suspected concussion

Presence of any one or more of the following signs & symptoms may suggest a concussion:

- |                          |                            |
|--------------------------|----------------------------|
| - Loss of consciousness  | - Headache                 |
| - Seizure or convulsion  | - Dizziness                |
| - Balance problems       | - Confusion                |
| - Nausea or vomiting     | - Feeling slowed down      |
| - Drowsiness             | - "Pressure in head"       |
| - More emotional         | - Blurred vision           |
| - Irritability           | - Sensitivity to light     |
| - Sadness                | - Amnesia                  |
| - Fatigue or low energy  | - Feeling like "in a fog"  |
| - Nervous or anxious     | - Neck Pain                |
| - "Don't feel right"     | - Sensitivity to noise     |
| - Difficulty remembering | - Difficulty concentrating |

© 2013 Concussion in Sport Group

#### 3. Memory function

Failure to answer any of these questions correctly may suggest a concussion.

- "At what venue are we at today?"
- "Which half is it now?"
- "Who scored last in this game?"
- "What team did you play last week/game?"
- "Did your team win the last game?"

**Any athlete with a suspected concussion should be IMMEDIATELY REMOVED FROM PLAY, and should not be returned to activity until they are assessed medically. Athletes with a suspected concussion should not be left alone and should not drive a motor vehicle.**

It is recommended that, in all cases of suspected concussion, the player is referred to a medical professional for diagnosis and guidance as well as return to play decisions, even if the symptoms resolve.

#### RED FLAGS

**IF ANY of the following are reported then the player should be safely and immediately removed from the field. If no qualified medical professional is available, consider transporting by ambulance for urgent medical assessment:**

- |  |                                 |
|--|---------------------------------|
| - Athlete complains of neck pain               | - Deteriorating conscious state |
| - Increasing confusion or irritability         | - Severe or increasing headache |
| - Repeated vomiting                            | - Unusual behaviour change      |
| - Seizure or convulsion                        | - Double vision                 |
| - Weakness or tingling/burning in arms or legs |                                 |

#### Remember:

- In all cases, the basic principles of first aid (danger, response, airway, breathing, circulation) should be followed.
- Do not attempt to move the player (other than required for airway support) unless trained to do so
- Do not remove helmet (if present) unless trained to do so.

from McCrory et al. Consensus Statement on Concussion in Sport. Br J Sports Med 47 (5), 2013

© 2013 Concussion in Sport Group

Any head injury could result in a concussion. You do not need to lose consciousness to have a concussion.

UC offers a Concussion Clinic for injuries on the field. No fee, no referral needed.

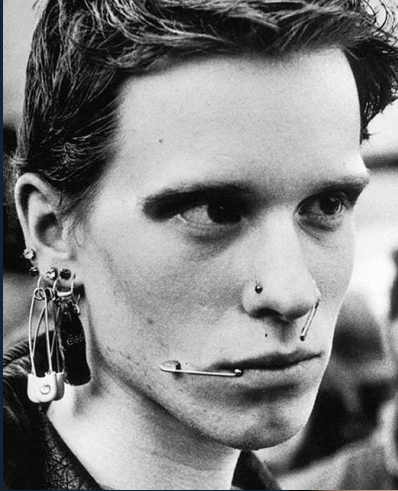
UNIVERSITY OF CALGARY  
SPORT MEDICINE CENTRE

About Services Clinics

CONCUSSION CLINIC



# Jewellery Not Allowed



# City Cups



## City Cup

Black Cup est. 1914

Calgary Cup est. 1999

Tony Marques est. 1997

John Burns est. 1999

Centennial Cup est. 2005

Kaiser Cup est. 2008

Boxers Bras & Beerfest

## Divisions Eligible

All

Division 2,3  
Master's Elite & Lower

Division 4 & lower

Master's Premier, Master's 1, Over  
45A & lower

Master's 2 & lower  
Over 45 & lower

Team entry – league rosters not  
required

All Coed Teams

## Dates

September

September

July - September

July - September

July - September

July - September

September

# Senior Provincials



Provincial Tier	2024 Location	Roster Due	Dates
Challenge Cup	Edmonton	July 31	<b>August 17-18</b>
Master's Major	Edmonton	July 31	Aug 30 – Sept 2
Premier	Calgary	August 21 <sup>st</sup>	Aug 30 – Sept 2
Tier 1	Calgary	August 21 <sup>st</sup>	Aug 30 – Sept 2
Tier 2	Calgary	August 21 <sup>st</sup>	Aug 30 – Sept 2
Tier 3	Edmonton	August 21 <sup>st</sup>	Aug 30 – Sept 2
Master's Premier	Edmonton	August 21 <sup>st</sup>	Aug 30 – Sept 2

# Senior Provincials



Provincial Division Teams wishing to **opt out** of Provincial Competition, must inform the league, in writing, no later than **Thursday June 6, 2024**.

Teams that do not opt out of Provincials are expected to compete should they qualify. Failure to attend Provincials will result in an ASA Fine of \$2,500 **AND** additional discipline from CUSA

## Men's Open Division Provincial Qualifying

There are **NO Provincial Qualifying Games**. Qualified teams will be based off of the final league standings and Provincial Opt-Out Teams.

Alberta Soccer trophies must be returned by date set by ASA Competition Committee.

- There will be a late trophy return fee of \$250 for any returned after the deadline.
- Teams will be responsible for the cost of repairs to a trophy, up to and including replacement.

# Key Dates & Reminders



Date	Event
May 1 <sup>st</sup>	Challenges for AMSL League 2025 due (plus \$1,000 deposit) Challenge for AMSL Provincial berth 2024 due (plus \$1,000 deposit)
June 6th	Final Day to withdraw from Provincials
June 18 <sup>th</sup>	<b>CUSA AGM – Mandatory meeting for all teams &amp;/or clubs</b>
July 31 <sup>st</sup>	<ul style="list-style-type: none"><li>• Transfer Deadline</li><li>• Last Day to Remove Players</li><li>• Notice of Intent for Promotional Challenge</li><li>• Final date to receive AMSL player citizenship exemption</li><li>• <b>AMSL Rosters (July 31<sup>st</sup> end of day)**</b></li><li>• <b>No transfer requests can be initiated on Aug 1 onwards.</b></li></ul>
Aug 23 <sup>rd</sup>	Provincial Rosters due Deadline for proof of coaching qualifications
Aug. 16 - 18	Challenge Cup & Jubilee Shield Provincials
Aug 30 – Sept 2	Senior Provincials

**Each Club or team MUST be in attendance. Fines for not attending!**

# CUSA Awards – presented at AGM

\* nominations open in May



## Award

### Jack Buckler

Awarded for the most outstanding contribution to the sport of soccer within Calgary and area.

### Lifetime Achievement

Presented to the individual(s) for years of outstanding contribution and unselfish effort towards the growth of CUSA

### Award of Merit

Presented to the individual(s) for time and services rendered in support of CUSA.

### Kieran McGarrigle

For outstanding contributions that improve the refereeing community.

# Broadview Fieldhouse Project

The Broadview Fieldhouse Project gave CUSA an opportunity to rebuild the fieldhouse's changerooms and allow a rooftop viewing platform.

The glass paneling that lines the viewing platform will be lined by attendees and can be seen from Memorial Drive.

City of Calgary traffic flow (2019) reports Memorial Drive averaging 44,000 daily past Broadview.

CUSA has over 120 games played in a single season at the Broadview field.

Contact Administration if you want to have your club crest installed.



# Team Awards from Indoor Pick up at CUSA Office – Date TBA





# Questions

[info@cusa.ab.ca](mailto:info@cusa.ab.ca)

403-270-0363



**Team Fee Draw to follow**

# Draw for 2024 Outdoor Season Fees



Did your team pay the deposit on time? ✓

Did your team pay the balance of fees on time? ✓

Did you hear your team name drawn now? ✓