

Canadian Lacrosse Association

Referee Positioning Floor Diagrams





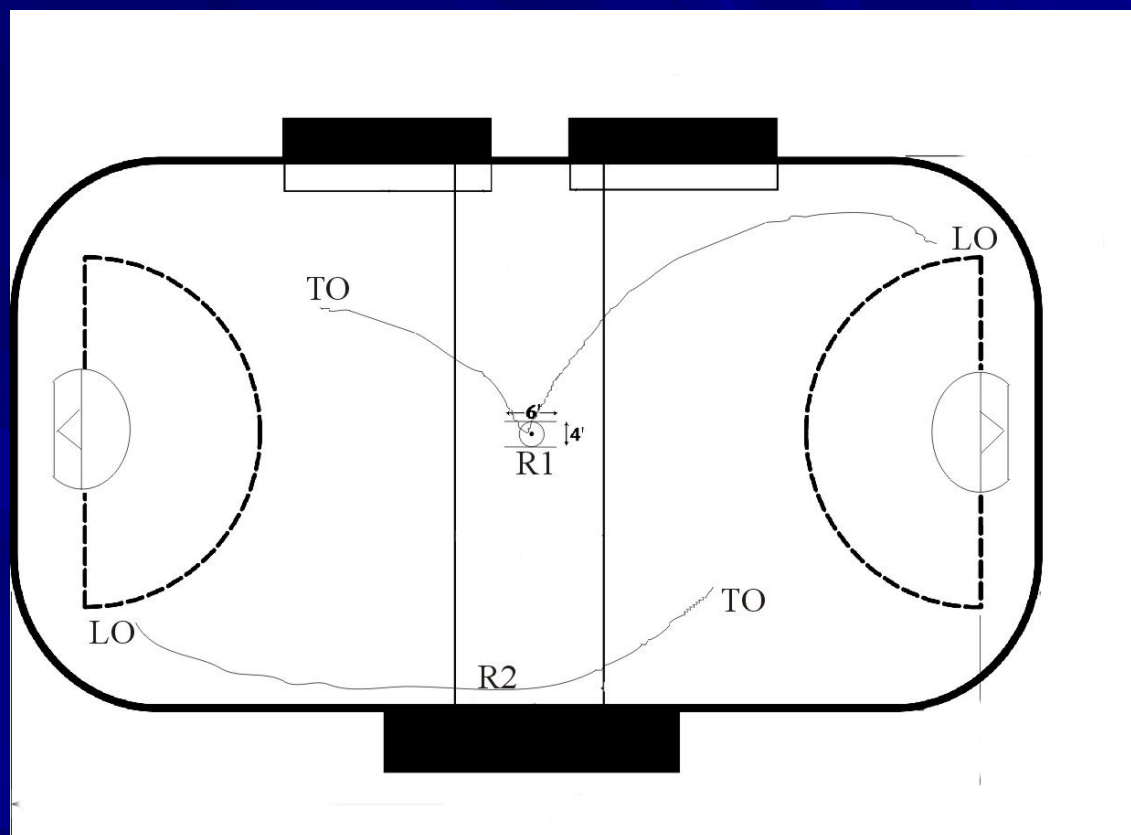
Face Off at Centre

Referee 1 (R1)

- Responsible for face off and face off infractions
- Becomes lead official in the end behind him/herself
- R1 calls "clear " to inform everyone that ball is out of face off circle

Referee 2 (R2)

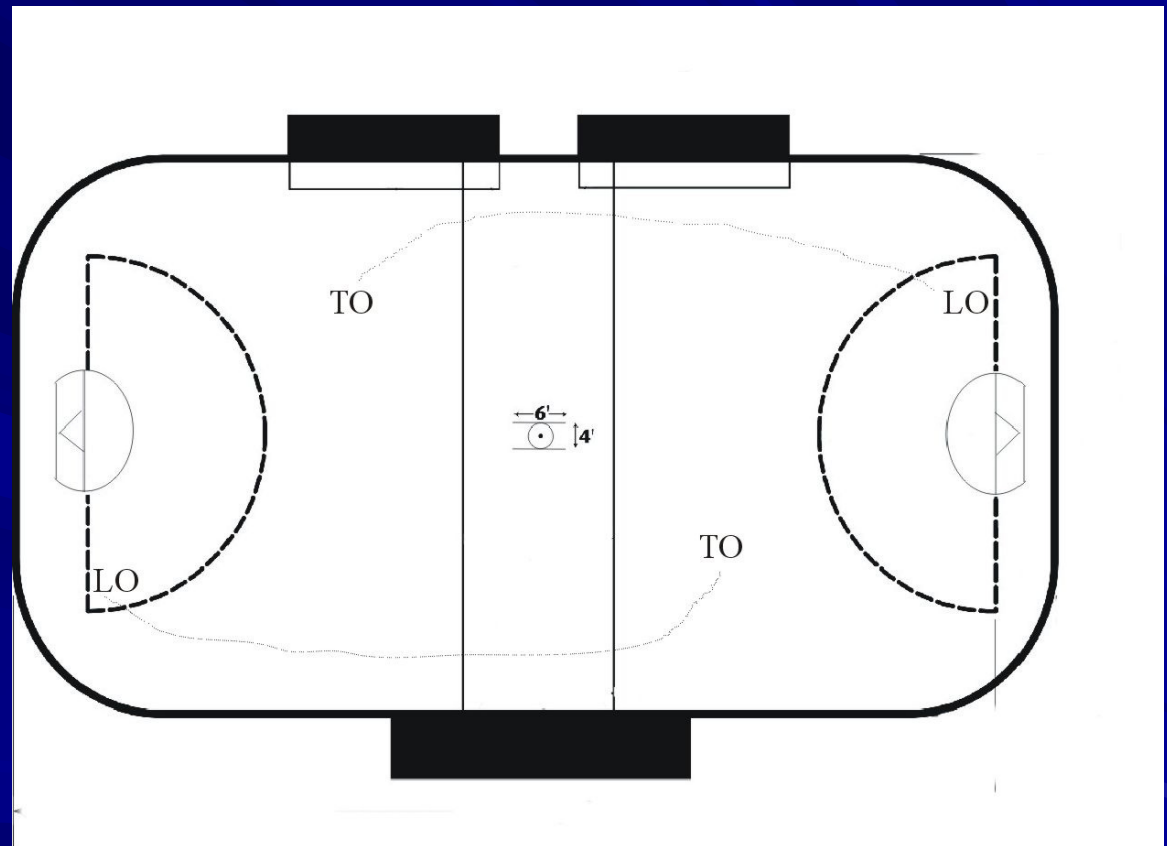
- Responsible for restraining line infractions
- Becomes lead official in the end Referee 1 is facing





Basic Floor Pattern

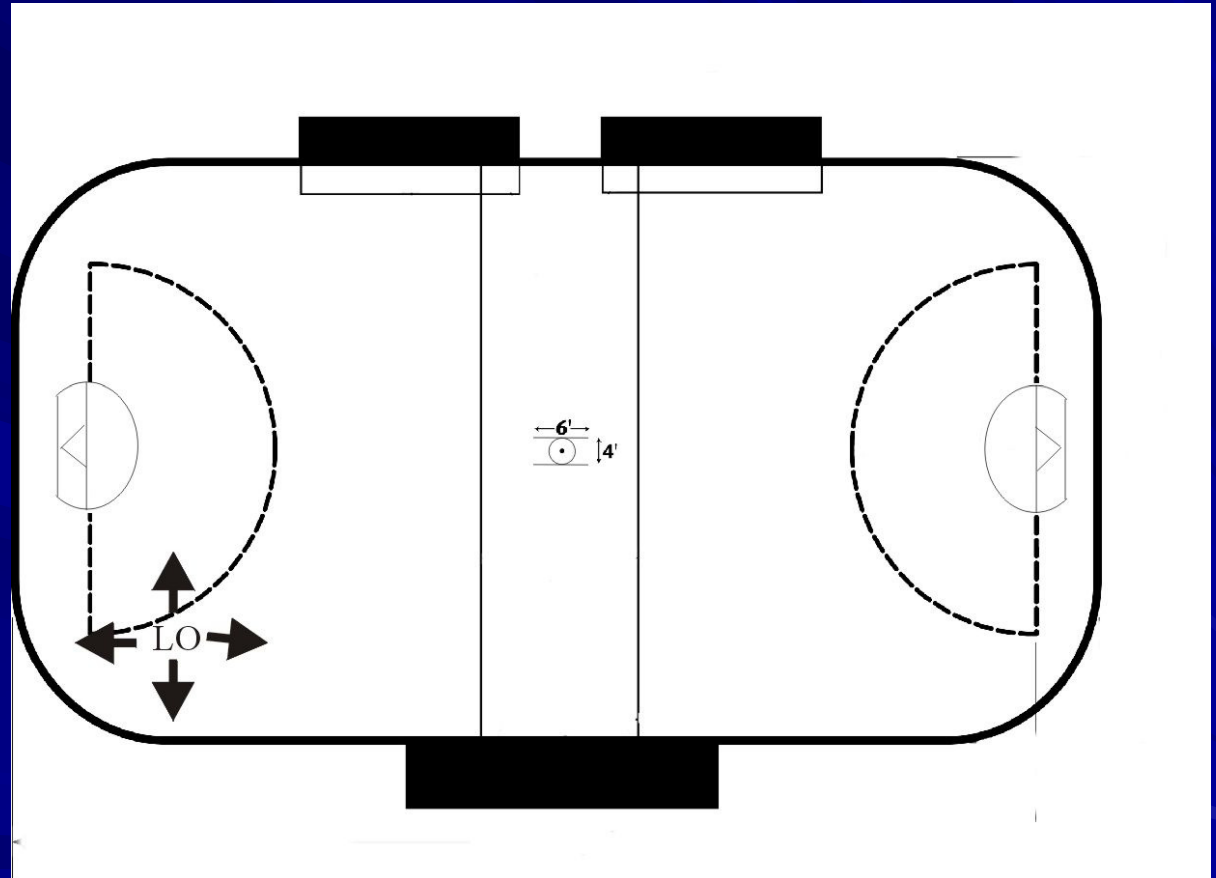
- Use the dotted line as a guide when moving down the floor.
- Lead Official stays ahead of the play.
- Trail Official follows last players up the floor.
- Don't crowd the boards





Lead Official Positioning

- Calibre of play and situation will dictate where to stand
- Attempt to let the play move in front of you by backing towards the end or side boards





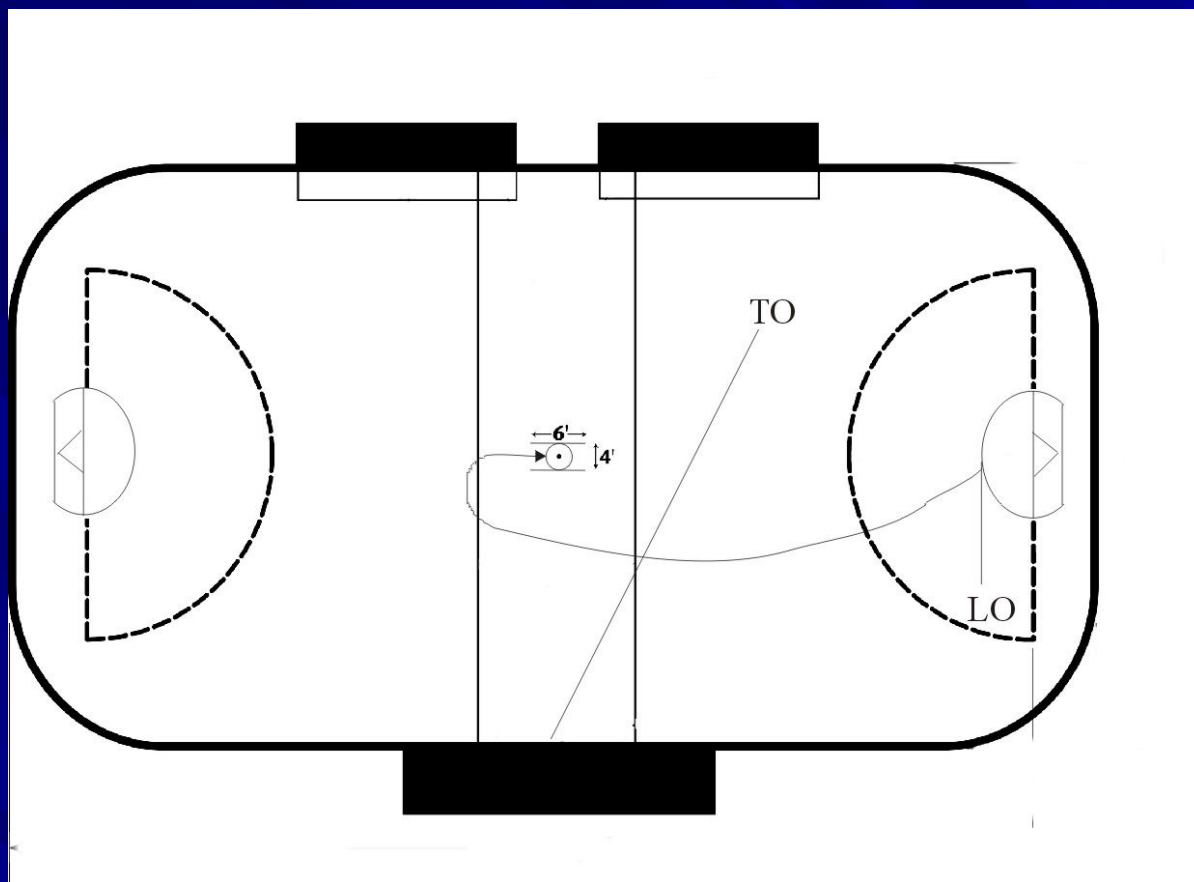
Goal Scored

Lead Official

- Signal goal and watches players for late hits etc. and then retrieves ball.
- Proceeds to center watching the players.
- Prepares for face off, facing net scored on.

Trail Official

- Watches for late hits etc.
- Reports the goal and prepares for face off

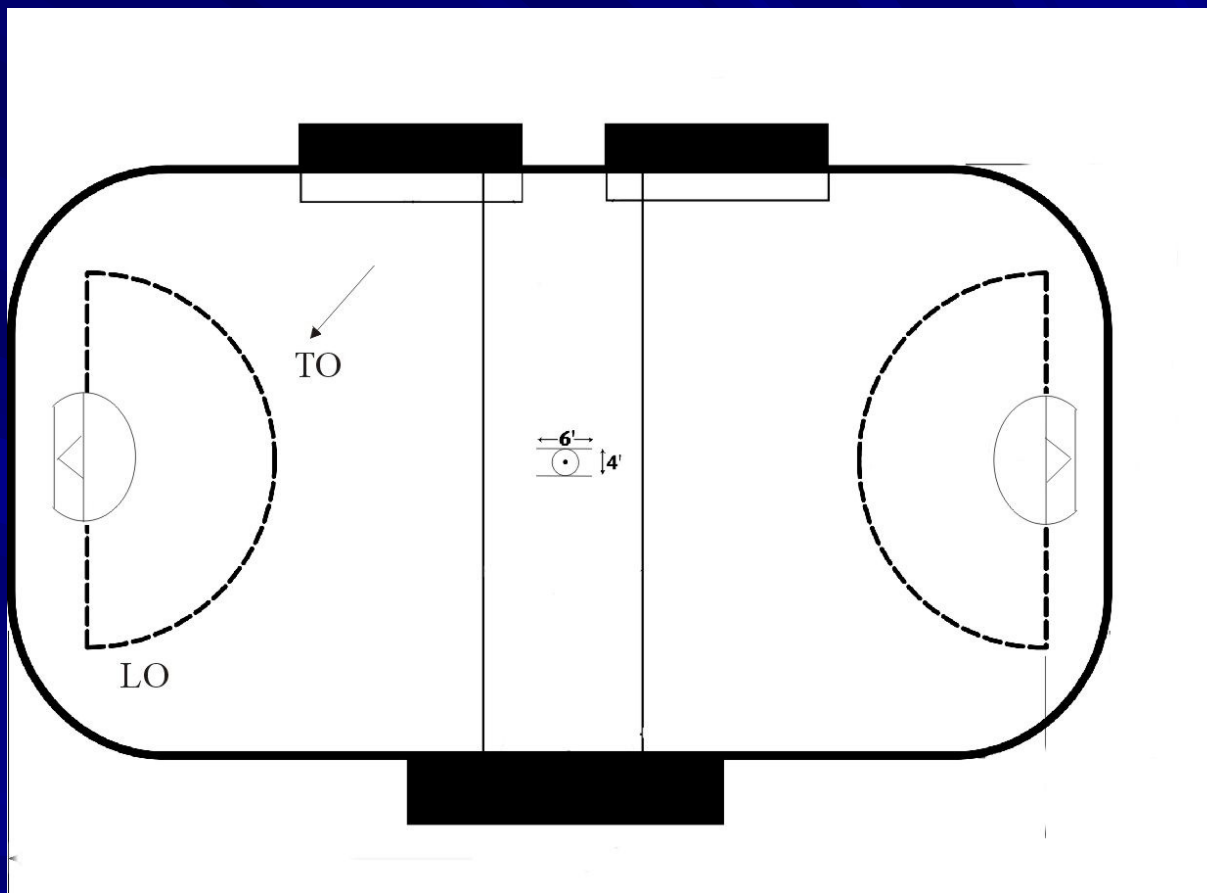




Man Short Positioning

Trail official

- Moves in closer to observe the crease play on their side.
- Must be prepared on fast break to get out of the play and down the floor.





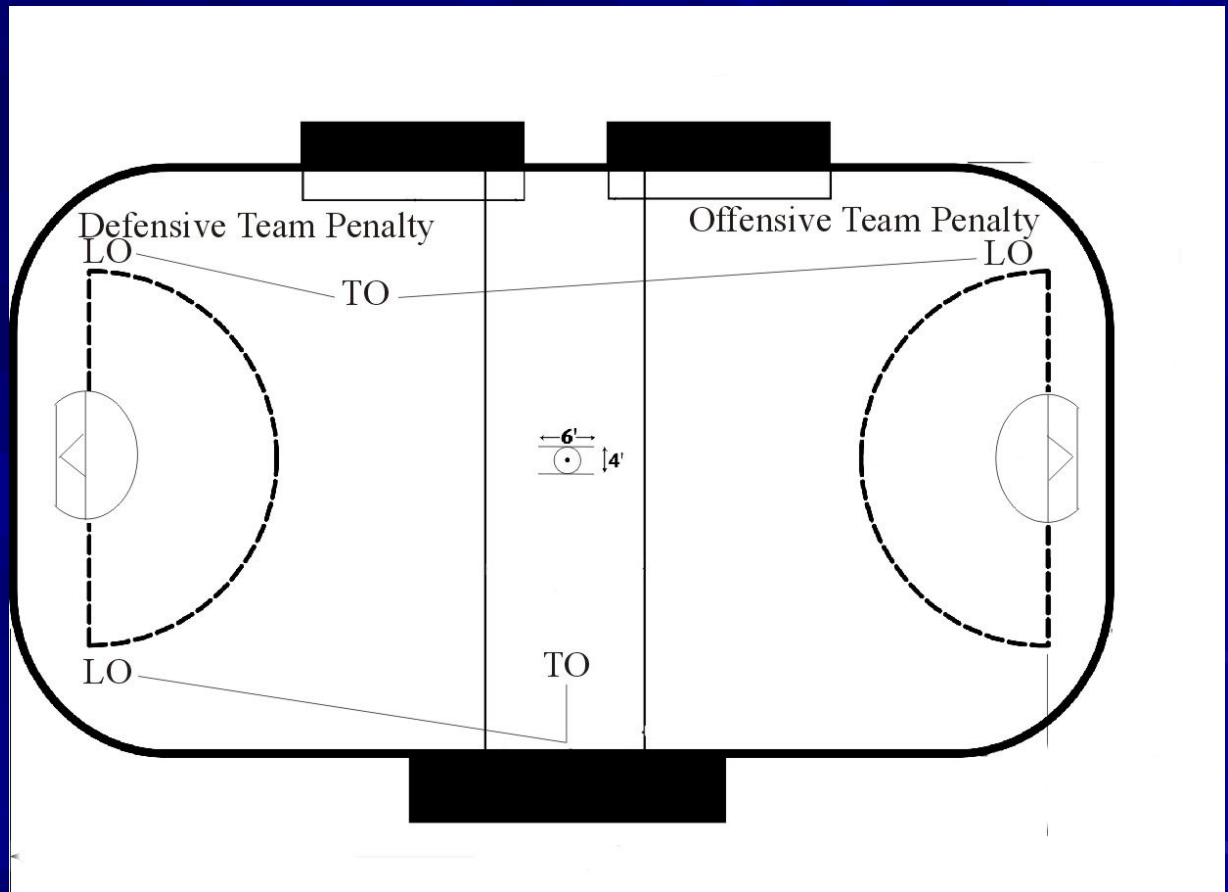
Penalty Call by Lead Official

Lead Official

- Report penalty to penalty box watching for altercations.
- Assume the Trail Official's position to restart play with possession in the centre zone.

Trail Official

- Watches for altercations and retrieves ball.
- Assumes lead officials position depending on which team is being awarded possession.





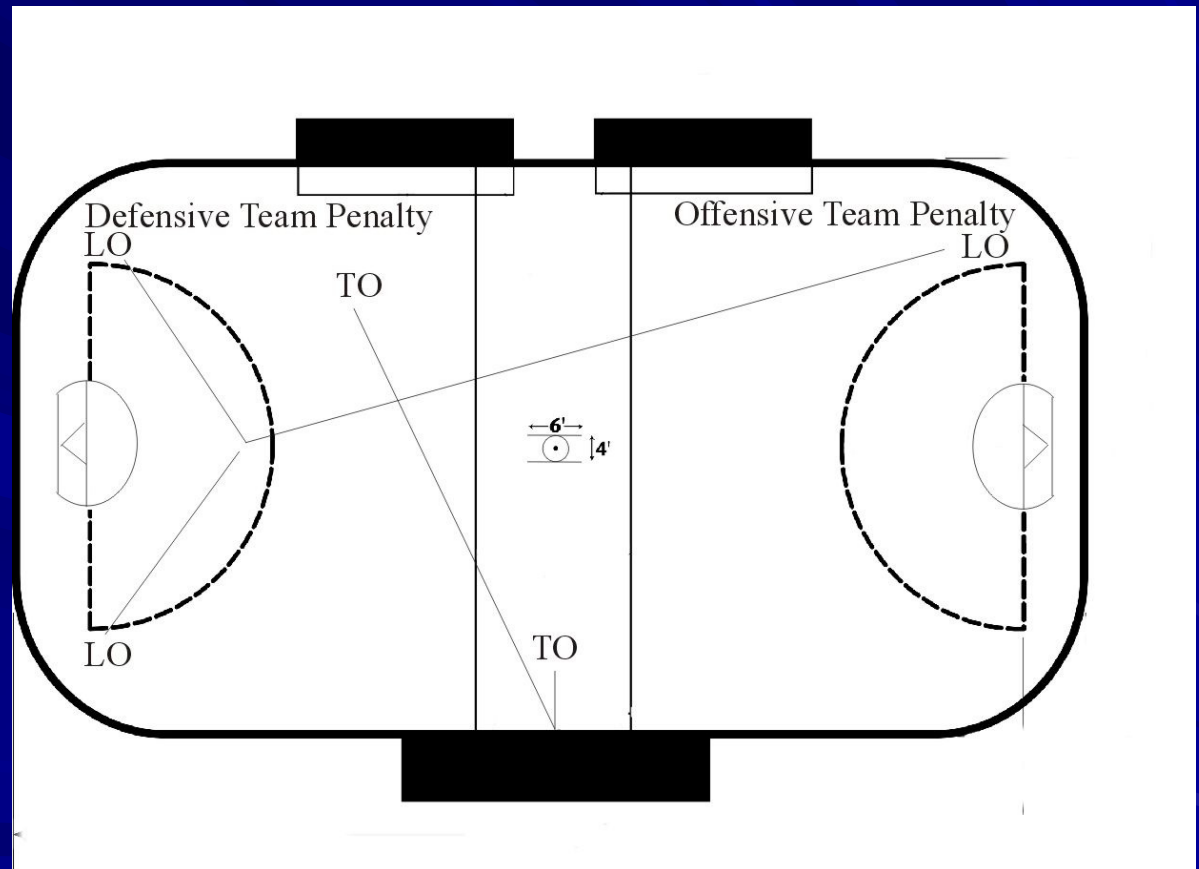
Penalty Call by Trail Official

Trail Official

- Report penalty to penalty box watching for altercations.
- Assume the Trail Official's position to restart play with possession in the centre zone.

Lead Official

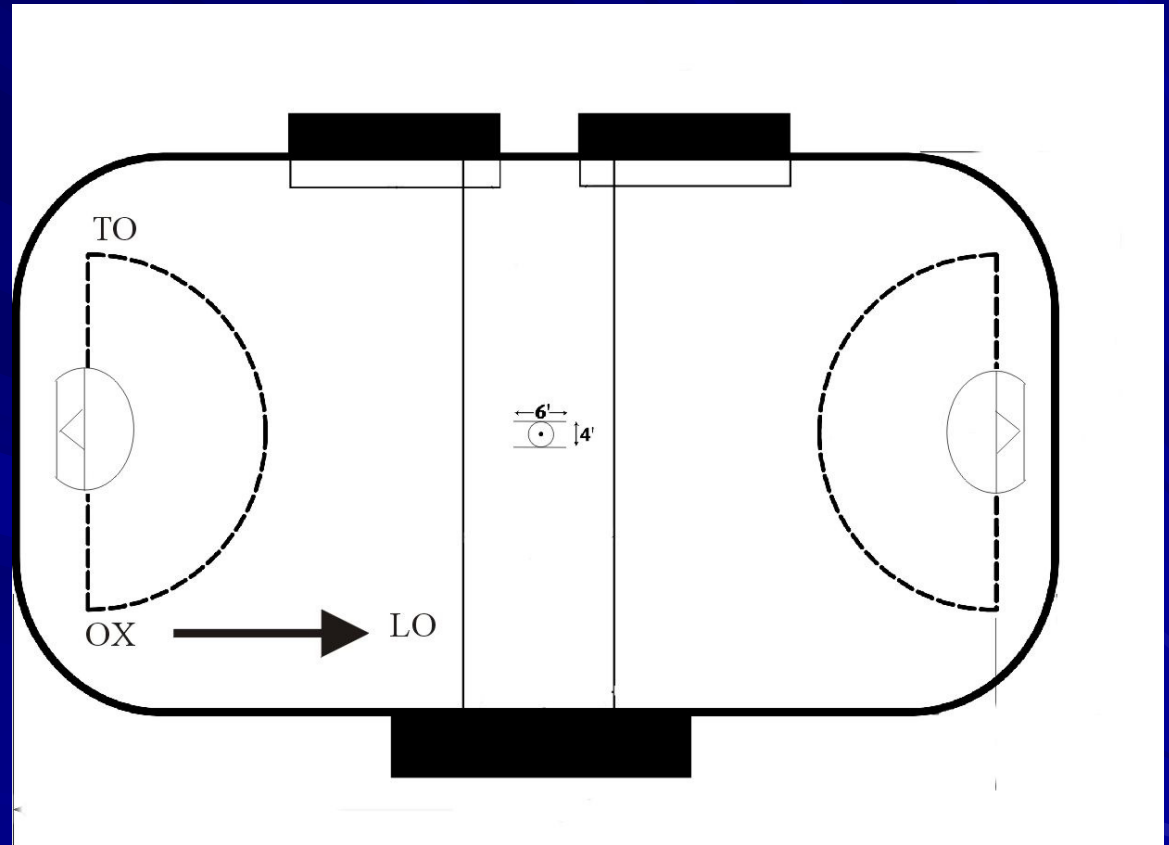
- Watches for altercations and retrieves ball.
- Assumes Lead Officials position depending on which team is being awarded possession.





Awarding Possession - 1

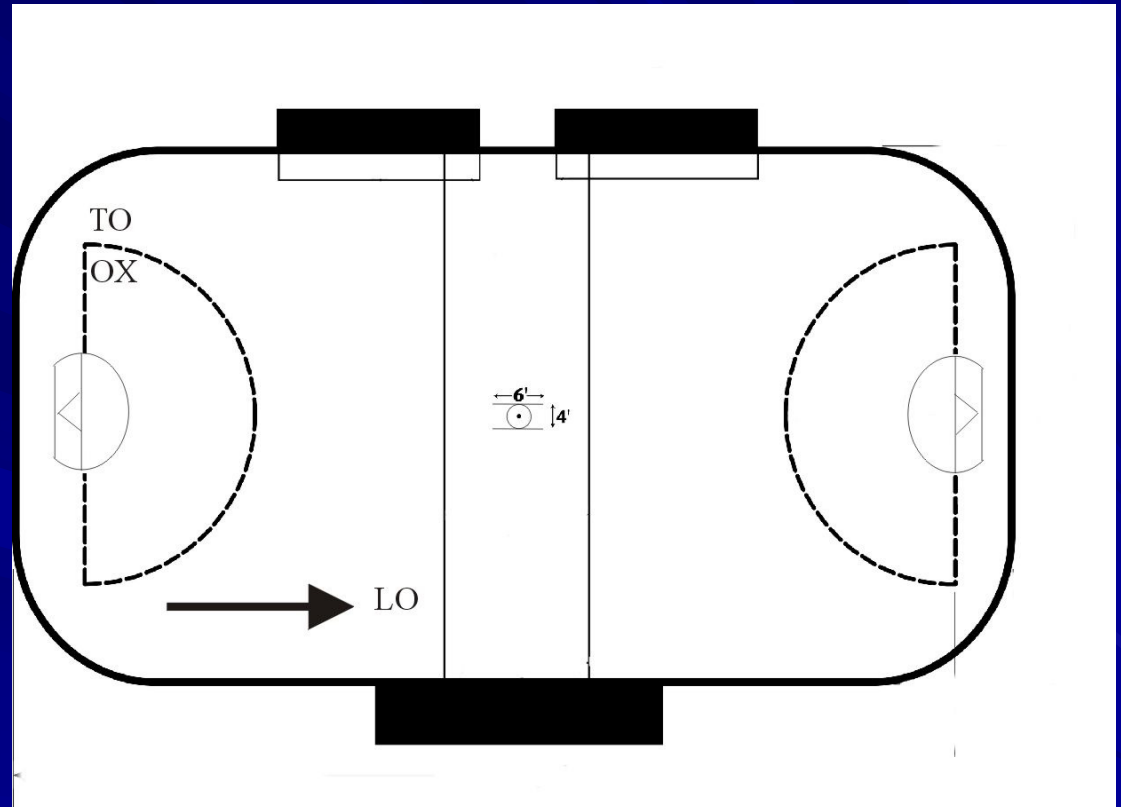
- Trail Official blows play in.
- Trail Official goes to the ball when necessary





Awarding Possession - 2

- Trail Official blows play in





Areas of Coverage

- Trail Official has ball carrier and his check, unless ball is in Lead Official's zone
- Lead Official has everything else.

