

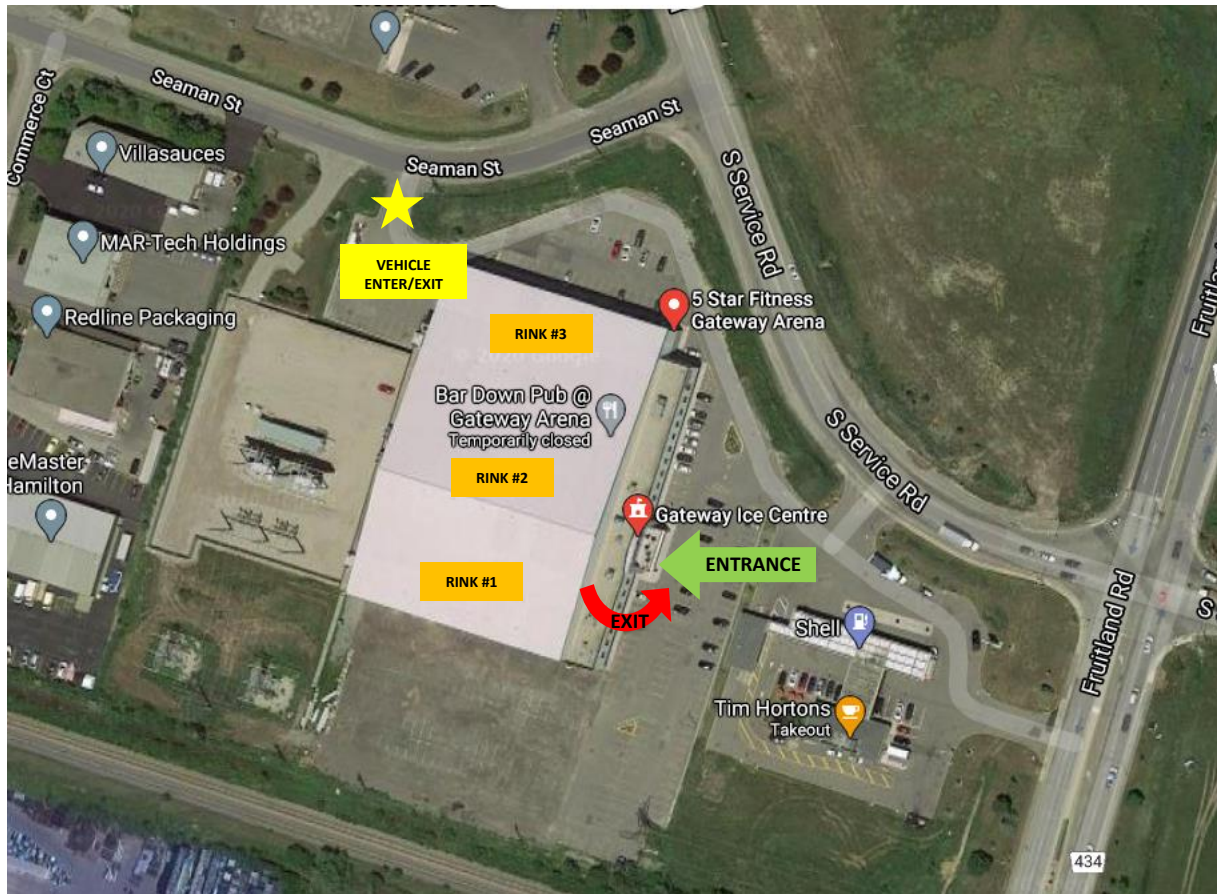


SCGHA PROTOCOL

LOCATION - GATEWAY ARENA

This procedure is applicable to the **Gateway Arena ONLY** and to ensure that all Covid protocol measures are adhered to at said location. These measures have been provided by Stoney Creek Girls Hockey Association and are in accordance with the Public Health Unit regulation guidelines.

Utilizing the directional map below, when entering the Gateway facility, please adhere to the following listed procedures:



Prior to entering the facility, all teams' members (Staff and Players) must have their Covid forms filled out and approved by their Team Manager and/or Trainer. All players must be dressed, including skates, at meeting area and prior to entering the facility.

To access Rink #1, #2, #3, please enter via "Entrance" doors.

Masks are to be worn prior to entry and at all times when in facility. Not adhering to this policy, you will be required to exit the premises.

Parent/player will enter/exit using the procedures posted – ABSOLUTELY NOT EXCEPTIONS PERMITTED. Parent/player entry is to occur separately.

Player is permitted entry 15 minutes prior to scheduled start of ice time and must be permitted entry by Team Manager/Trainer ONLY.

Dressing rooms are permitted for use but are subject to social distancing requirements. Washroom facilities within dressing rooms are NOT available. Players must be dressed and masks must be worn until Player is on ice. Showers will not be available but washroom facilities are only accessible from main lobby.

One (1) Parent/Guardian permitted entry per player – no additional siblings. Manager will record Arena, Start time, Association, Team, List of players, Parent/Guardian name and contact number.

Parent/Guardian viewing permitted via upper level only. Ice level viewing is not permitted. "BAR DOWN" is a fire exit only - viewing is not permitted in that area of the facility. Maintain your social distancing by adhering to the marked symbols (X) in the viewing area. Do not congregate in any area – main lobby, upstairs level, stairway, entering or exiting.

Parent/Guardian MUST EXIT immediately after game/practice has completed. Do not congregate or loiter in any area. Maintain social distancing (6 feet) when leaving the area. Use Exit doors as marked – not same as Entrance doors.

Facility staff will sanitize benches, high touch point areas and dressing rooms after each use.

When players exit arena, use applicable door (not same as Entrance door).

To ensure other upcoming scheduled teams have sufficient parking and accommodations, **please leave parking lot area in a timely fashion.**

Thank you.