



**PROSPORT**  
CLOTHING COMPANY

*Images - Ideas - Identity*

Phone: 780-814-6199 Fax: 780-539-7524  
Unit 13B, 11500 - 100 Street, Grande Prairie, AB T8V 4C2

---

# GP KNIGHTS APPAREL PROGRAM 2023-24 Season



---

For more information contact 780-814-6199


## **Hello and Welcome to the 2023-24 Season**

As you will see on the following pages GPMHA, Prosport Clothing Company (a division of Ernie's Sports Experts) and CCM Hockey have put together a great package of off-ice apparel for the upcoming season.

These offerings bring a great look that is consistent with GPMHA branding but still allows individualization and a great assortment at the same time.

### **GPMHA VISION**

To be a leader and ambassador for young athletes and families throughout the Peace Country.



## Grande Prairie KNIGHTS Apparel Program

Tracksuits (jackets and/or pants) must be purchased through the GPMHA approved supplier only.

**Tracksuit Jackets** - will come with the GPMHA logo on the back, as well as the Knights logo on the left chest. Player numbers, Coach, Assist. Coach, Trainer or Manager may be placed on the right cuff or the bottom right front of the jacket in white lettering. ONLY the GPMHA logo is allowed on the upper back of the jacket.

**VERY IMPORTANT** - If the team has **ONE** sponsor who is paying for the entire team's tracksuits (including all the embroidery), then that one sponsor's logo can appear on the right arm.

If the team has **TWO** sponsors paying for the entire team's tracksuits (including all the embroidery), then the two sponsor's names (simple font) will be in **white lettering** on the right arm.

If the team is putting a tracksuit sponsor's logo or name on the jacket, the team must also put the team sponsor's name on the left arm in white lettering. The size of the sponsor name is to be no larger than 2" high and 2.5" wide.

**Tracksuit Pants** - Do not include the Knights logo on the left thigh, it is an additional charge of \$8.00. Player numbers may be placed on the right calf in white lettering. No other text or logos are allowed.

**Hoodie** - must have one of the approved Knights logos on the front and nothing on the back. Sponsors are allowed on Hoodies, they will be placed on the right arm. If the team has **TWO** sponsors who are paying for the entire team's hoodies, then the two sponsor's names will be in **white lettering** on the right arm. Numbers only on either front left pocket or left cuff on hoodies.

**Polo Shirt** - must have one of the approved Knights logos on the front. This item may include the player's name and/or number, as well as the sponsor's name and/or logo on the sleeves or back.

**Off-Ice Training Apparel (long sleeve training tee, short sleeve training tee)** - must have one of the approved Knights logos on the front. This item may include the player's name and/or number, as well as the sponsor's name and/or logo on the right sleeve.

**Off-Ice Training Apparel (pants, shorts)** - Includes a Knights Logo on right thigh and then the option number on the left calf.

**Headwear (toque or ball cap)** - Must have the Knights Head on the front. This item may include the player's number. No sponsor logos are permitted.

**Practice Jerseys** - come with one of the approved Knights logos. The same rules as the tracksuit jackets apply. The item may include the player's numbers and names are allowed on the upper back. Sponsor logos are permitted on the right arm or the upper back if there are no names.

**Custom Team Bags** - see each supplier for details.

**Custom Pant Shells** - includes knights logo on thigh and only the player number may be added. No sponsor logos permitted.



## **CCM Midweight Jacket**

100% polyester, zippered side pockets, reflective tape at back, elastic hem and cuffs for comfort, polar fleece lining inside collar and body for added warmth, taffeta lining with insulation in sleeves, inner drop in pocket with velcro closure

**Adult S-3XL \$76.99**  
(J5318 - Navy)

**Youth XXS-XL \$71.99**  
(YTJ5318 - Navy)

Price includes embroidered GPMHA logo on nape and Knights logo on left chest

**Add player number, Coach, Asst. Coach, Trainer or Manager \$7.00**



## **CCM Core Lightweight Skate Pant**

100% polyester, breathable fabric, adjustable waistband with drawcord, zippered pockets, reflective tape at back yoke, auto-lock zipper at hem provides adjustable leg opening, tricot mesh and tafeta lining

**Adult S-3XL \$41.99**  
(PN5315 - Navy)

**Youth XXS-XL \$39.99**  
(YTPN5315 - Navy)

**Add Knights Head logo \$8.00**

**Add player number \$7.00**



## **CCM Team Winter Jacket** **Adult, Youth and Womens**

Adult - 100% polyester, zippered pockets, thick rib knit cuffs, reflective tape at back yoke, adjustable hem with bungee and cordlock, adjustable sleeve opening with velcro, detachable hood with zipper, inner drop in pocket with velcro closure

Women's fit - 100% Polyester. Features zippered pockets, thick rib knit cuffs, reflective tape at back yoke, adjustable hem with bungee and cordlock, adjustable sleeve opening with velcro, detachable hood with zipper (SR only). Longer Length.



**Adult S-3XL \$108.99**      **Youth XXS-XL \$103.99**  
(J5320 - Navy or Black)      (YTJ5320 - Navy or Black)  
**Womens - S - XL \$139.99**  
(JWN2TA -Black)

Price includes embroidered GPMHA logo on nape and Knights logo on left chest

**Add player number, Coach, Asst. Coach, Trainer or Manager \$7.00**



## **CCM Team Quilted Winter Jacket**

100% polyester, external zippered pockets, inner drop in pockets, Thinsulate insulation

**Adult S-3XL \$128.99**      **Youth XXS-XL \$126.99**  
(J4797 - Navy)      (YTJ4797 - Navy)

Price includes embroidered GPMHA logo on nape and Knights logo on right chest

**Add player number, Coach, Asst. Coach, Trainer or Manager \$7.00**



## CCM Team Quilted Jacket

100% polyester, external zippered pockets, collar and sleeve in stretch tech fleece, Thinsulate insulation in body of jacket.

**Adult S-3XL \$94.99**

(J5321 - Black or Grey)

**Youth XXS-XL \$91.99**

(YTJ5321 - Black or Grey)

Price includes embroidered GPMHA logo on nape and Knights logo on right chest

**Add player number, Coach, Asst. Coach, Trainer or Manager \$7.00**



## CCM Softshell Jacket (adult only)

Bonded microfleece, zippered side pockets, elastic binding at the cuff and a double layer collar

**Adult XS-3XL \$76.59**

(J5319 - Black or Dark Heather Grey)

Price includes embroidered GPMHA logo on nape and Knights logo on left chest

**Add player number, Coach, Asst. Coach, Trainer or Manager \$7.00**



# HOODY/CREWNECK



## CCM Team Fleece Hoody

70% cotton/30% polyester, (grey 50% cotton/50% polyester), hidden kangaroo style pocket, skate lace drawcords, mesh-lined hood, ribbed cuffs and waistband

**Adult S-2XL \$48.99**

(F7512 - Navy or Dark Heather Grey)

Price includes one of the approved Knights logos heat pressed on front

**Youth XXS-XL \$45.99**

(YTF7512 - Navy or Dark Heather Grey)

**Add player number, Coach, Asst. Coach, Trainer or Manager \$4.00**



## CCM Team Pullover Locker Crew

Tech Fleece crew combines a lightweight insulator with a premium look and construction built to travel.

**Adult S-2XL \$53.99**

(FCR2TB - Heather Navy or Dark Grey)

Price includes heat pressed left chest Knights logo

**Youth S-XL \$49.99**

(FCR2TB - Heather Navy or Dark Grey)

**Add player number heat pressed - Coach, Asst. Coach, Trainer or Manager \$4.00**



# OFF-ICE TRAINING APPAREL



## **CCM Training Tech Tee (while quantities last)**

100% polyester, lightweight, breathable, moisture wicking fabric, fitted

**Adult S-2XL \$24.99**

(T6683 - Navy or Dark Grey)

**Youth S-XL \$22.99**

(YTT6683 - Navy or Dark Grey)

Price includes one of the approved Knights logos heat pressed on front

**Add player number, Coach, Asst. Coach, Trainer or Manager \$4.00**

## **Team 365 Zone Performance Tee**

100% polyester interlock, moisture wicking fabric

**Men's XS-6XL \$24.99**

(TT11 - Sp. Graphite)

**Youth XS-XL \$22.99**

(TT11Y - Sp. Graphite)

Price includes one of the approved Knights logos heat pressed on front

**Add player number, Coach, Asst. Coach, Trainer or Manager \$4.00**



**GST IS NOT INCLUDED IN PRICING, WILL BE ADDED TO FINAL INVOICE**

# OFF-ICE TRAINING APPAREL



## CCM LS Training Tech Tee

100% polyester, lightweight, breathable, moisture wicking fabric

Adult S-2XL \$29.99  
(TLS2RA - Navy or Dark Grey)

Youth S-XL \$27.99  
(TLS2RA) Navy or Dark Grey)

Price includes one of the approved Knights logos heat pressed on front

**Add player number, player name, Coach, Asst. Coach, Trainer or Manager \$4.00**



## CCM Team Training Short

100% polyester woven fabric, moisture wicking fabric, mesh side panels, exposed CCM jacquard elastic at the back, adjustable waistband with drawcord, zipped side pockets

Adult S-2XL \$24.99  
(S5653 - Navy or Black)

Youth S-XL \$23.99  
(YTS5653 - Navy or Black)

Price includes the Knights Head logo heat pressed on right thigh

**Add player number \$4.00**



## Athletic Knit Dryland Shorts

Dryflex fabric, moisture wicking, side pockets

Men's S-2XL \$19.99  
(AS1700 - Navy)

Youth S-XL \$19.99  
(AS1700 - Navy)

Women's XS-2XL \$19.99  
(AS1700 - Navy)

Price includes the Knights Head logo heat pressed on right thigh

**Add player number \$4.00**

**GST IS NOT INCLUDED IN PRICING, WILL BE ADDED TO FINAL INVOICE**

# COACHES POLO



## Dade Polo

100% polyester, textured knit with a wicking finish, centre front three button placket, flat knit collar, tagless, hanger loop at inside back neck

**Adult S-5XL \$24.99**

(16398 - Vintage Navy or  
Heather Dark Charcoal)

**Women XS-3XL \$24.99**

(96398 - Vintage Navy or  
Heather Dark Charcoal)

Price includes embroidered Knights logo on left chest

**Add player number, player name, Coach, Asst.  
Coach, Trainer or Manager \$7.00**



## CCM Team Relaxed Polo

98% polyester, and 2% silver that contains anti microbial properties.

**Adult S-XXL \$36.99**

(PSS3TB - Vintage Navy or  
Heather Dark Charcoal)

**Youth \$36.99**

(PSS3TB - Vintage Navy or  
Heather Dark Charcoal)

Price includes embroidered Knights logo on left chest

**Add player number, player name, Coach, Asst.  
Coach, Trainer or Manager \$7.00**

**GST IS NOT INCLUDED IN PRICING, WILL BE ADDED TO FINAL INVOICE**

# WOMEN'S APPAREL



## CCM Premium Women's Pullover Hoodie

All new premium tech fleece pullover hoodie combines a breathable soft feel with a modern design built to travel on and off the bus to the rink and gym featuring front pockets and brushed jersey lined hood.

**Women's XS- XL \$57.99**

(FHO2TC - Grey or Navy)

Price includes one of the approved Knights logos pressed on front



## CCM Training SS Womens Tee

88% polyester/12 % spandex

**Women's XS- XL \$29.99**

(TSS2RB - Navy or Grey )

Price includes one of the approved Knights logos heat pressed on front

**Add player number, Coach, Asst. Coach, Trainer or Manager \$4.00**

**GST IS NOT INCLUDED IN PRICING, WILL BE ADDED TO FINAL INVOICE**



## CCM Team Training Flex Cap

97% polyester/3% spandex, tech fabric with perforated back panels

Senior S/M, L/XL **\$22.99**      Junior OSFA **\$21.99**  
(HFX3TA - Navy)                      (YTC5405 - Navy)

Price includes embroidered Knights Head logo on front left panel

**Add player number \$7.00**



## CCM Team Meshback Trucker

83% polyester/11% rayon/6% spandex, structured flex-fit cap, two-color styling

Senior OSFA **\$22.99**                      Junior OSFA **\$21.99**  
(C5410 - Navy/H. Grey)                      (YTC5410 - Navy/H. Grey)

Price includes embroidered Knights Head logo on front left panel

**Add player number \$7.00**





## **CCM Team Fleece Pom Knit Toque (while quantities last)**

100% acrylic, cuffed knit with ribbing, soft polar fleece lining, topped with a chunky multi color pom

**Senior OSFA \$24.99**

(C5409 - Navy/Grey)

**Junior OSFA \$22.99**

(YTC5409 - Navy/Grey)

Price includes embroidered Knights Head logo on toque front

**Add player number \$7.00**



## **CCM Team Cuffed Watch Knit Toque**

100% acrylic, ribbed knit beanie

**Senior OSFA \$24.99**

(C5407 - Navy)

**Junior OSFA \$22.99**

(YTC5407 - Navy)

Price includes embroidered Knights Head on logo toque front

**Add player number \$7.00**



## **AJM Pom Toque - Limited Stock**

100% acrylic, rib knit toque, pom top

**One Size \$19.99**

(20293033)

Price includes embroidered Knights Head logo on toque front

**Add player number \$7.00**





## **CCM 5000 Solid Color Practice Jersey**

100% polyester, v-neck collar, woven neck tape  
Comes in 16 color options: black, dark green, harvard, kelly green, maroon, mystic grey, navy, orange, pink, red, royal, sky blue, sunflower, turquoise, violet, white

**Senior XS, S/M, L/XL, G \$18.99**

**Junior XS, S/M, L/XL, G \$18.99**

Price includes one of the approved Knights logos pressed on front

**Add player name and number on back - \$12.00**



## **CCM 6000 2 Color Practice Jersey**

100% polyester, tactical dry moisture wicking fabric, woven neck tape

Comes in 17 color options: white/black, dark green/white, harvard/white, kelly green/white, maroon/white, mystic grey/white, navy/white, orange/white, red/white, royal/white, sky blue/white, sunflower/white, turquoise/white, violet/white, white/black, white/navy, white/red

**Senior XS, S/M, L/XL, G \$29.99**

**Junior XS, S/M, L/XL, G \$29.99**

Price includes one of the approved Knights logos pressed on front

**Add player name and number on back - \$12.00**





## MNM Custom Hockey Bag

Hockey bag or coach bag, turn around time is 6 weeks. Best value is ordering in team sets but you can order individually. Please inquire directly about team pricing.

**Coach Bag 24"x15"x15" (w/shoulder strap) \$109.99**

**Senior Hockey Bag 31"x20"x15" \$124.99**

**Junior Bag 24"x15"x15" \$116.99**

**Goalie Bag 40"x20"x24" \$144.99**

Price includes player name and number

## Under Armour Backpack

9.3"x13.6"x18.9", holds up to a 15" MacBook Pro, soft lined laptop sleeve

**One Size \$49.99**

(1306060)

Price includes Knights logo embroidered on bag front

**Add player name \$7.00**

**Add player number \$7.00**

## Under Armour 4.0 Medium Duffel

11.8"x24.4"x13", large vented pocket for shoes or laundry, water resistant fabric, internal slip pockets for organization

**One Size \$49.99**

(1342657)

Price includes Knights logo heat pressed on bag side

**Add player name \$7.00**

**Add player number \$7.00**

# ALTERNATE ITEMS



## Canada Sportswear Wool Jacket

80% wool/20% nylon, inner zippered storm flap with knit collar, 5 button closure, quilted lining

**Senior S-4XL \$141.99**  
(L0329 - Black)

**Junior XS-XL \$129.99**  
(L00329 - Black)

Price includes embroidered GPMHA logo on nape and Knights logo on left chest

**Add player number, Coach, Asst. Coach, Trainer or Manager \$7.00**



## Gildan Heavy Blend Hoody

50% cotton/50% polyester fleece, classic fit, air jet yarn for softer feel, double lined hood, pouch pocket, tearaway label

**Adult S-XL \$26.99 2XL \$28.99 3XL \$31.99**  
(18500 - Heliconia)

**Youth XS-XL \$25.99**  
(18500B - Heliconia)

Price includes one of the approved Knights logos pressed on front

**Add player number, Coach, Asst. Coach, Trainer or Manager \$4.00**

**GST IS NOT INCLUDED IN PRICING, WILL BE ADDED TO FINAL INVOICE**

# ALTERNATE ITEMS



## Trimark Mercer Vest

Featuring 100% polyester faux down insulation, an interior storm flap with chin guard and water-repellent finish. The women's style has a dropped back hem with shaped seams and a tapered waist for a more natural fit.

**Adult S-5XL and Womens XS-3XL \$84.99**

(L0329 - Black)

(L00329 - Black)

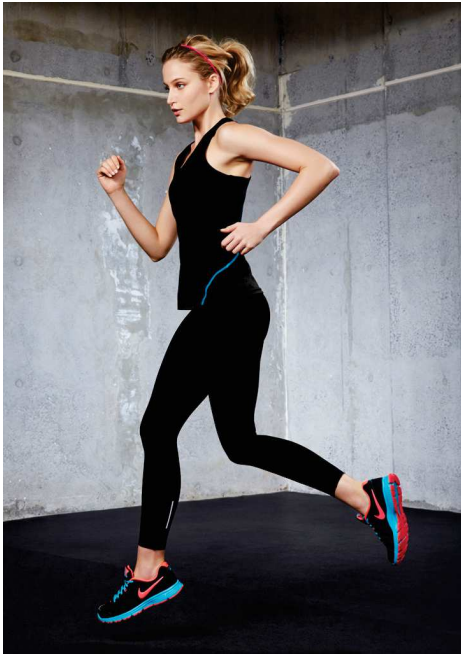
Price includes embroidered Knights logo on left chest

**Add player number, Coach, Asst. Coach, Trainer or Manager \$7.00 on front right hip**



**GST IS NOT INCLUDED IN PRICING, WILL BE ADDED TO FINAL INVOICE**

# ADDITIONAL APPAREL/ITEMS



## **Fashion Biz Flex Full Leggings**

89% Nylon, 11% Elastane, 4 Way Stretch fabric  
Power stretch performance fabric with no show through

9.1 oz/yd<sup>2</sup>

**Women's XXS-2XL \$42.99**  
(LG02L)

**Add Knights Head logo \$6.00**

**Add player number \$4.00**



## **CCM Team Fleece Cuffed Jogger**

70% Cotton/30% Polyester

Cuffed joggers feature open side pockets, with and outer self fabric and inner elastic waistband with drawcord.

**Men's XS- XL \$49.99**  
PFP2TA - Vintage Navy

**Youth \$46.99**  
PFP2TA - Vintage Navy

Price includes one of the approved Knights logos heat pressed on right thigh

**Add player number, Coach, Asst. Coach, Trainer or Manager \$4.00**

**GST IS NOT INCLUDED IN PRICING, WILL BE ADDED TO FINAL INVOICE**

# ADDITIONAL APPAREL/ITEMS



## Custom Water Bottle

'Tall boy' water bottle with pro style pressure valve cap, imprinted with Knights logo

**850ml \$9.99**  
(16193297)



## Yeti 20oz Rambler

20oz rambler, durable stainless steel with double-wall vacuum insulation, tumbler & lid are dishwasher safe

**20oz. \$52.99**

\*\*Colors available may vary\*\*

Price includes Knights logo laser etched on side of tumbler

**Add name \$6.00**

**APPROVED LOGOS**



**Twill Crest - additional charge of \$15.00**

**GST IS NOT INCLUDED IN PRICING, WILL BE ADDED TO FINAL INVOICE**