

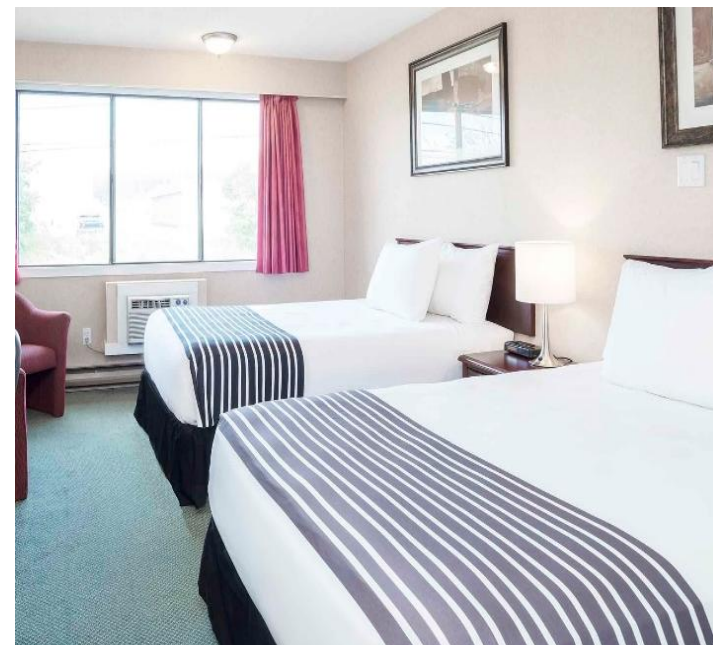


SANDMANHOTELGROUP 

About us

Conveniently located across from the Orchard Park Mall Shopping Centre, this Sandman is close to both city businesses and popular outdoor hot spots like wineries and ski resorts.

If you're looking to unwind and relax, comfortable guest rooms, our atrium indoor swimming pool and hot tub offer the perfect reprieve, while fully equipped meeting and banquet facilities, on-site dining, and high-speed internet access ensure you have all the work essentials at your fingertips.



SANDMAN HOTEL KELOWNA

2130 Harvey Ave,
Kelowna, BC | V1Y 6G8
Phone 250 860 6409

Some of our many features include :

- Comfortable Guest Rooms and Suites
- Fitness Facilities | Indoor Pool and Hot Tub
- Complimentary Wireless High-Speed Internet
- Meeting & Banquet Facilities
- In-Room Dining | Denny's 24-hour Restaurant
- Bar One Urban Lounge

All provincial sales taxes (5% GST, 8% PST, 3% MRDT) and \$2.00 eco fee are applicable to the above nightly rates. Rates are non-commissionable. Rates listed above are based on double occupancy.

RESERVATION GUIDE

Reservation may be made via:

1. Email Sales_kelowna@sandman.ca
- Or 2. Phone Hotel Direct (250) 797-7900

To receive the correct rates, you must reference— KMFS Tournament 2026.

Thank you for choosing the Sandman Hotel Kelowna for your next stay :

A valid credit card is required at the time of reservation to secure any guests rooms under this block

Kelowna Minor Fastball 2026 Rates

Dates	Room Type	Rates
April 1 st to April 30 th	Standard Double Queen	\$159.00
	Executive King Suite with Hide-bed & Kitchen	\$179.00
May 1 st to May 13 th	Standard Double Queen	\$159.00
	Executive King Suite with Hide-bed & Kitchen	\$179.00
May 14 th to May 30 th	Standard Double Queen	N/A
	Executive King Suite with Hide-bed & Kitchen	\$234.00
June 4 th to June 8 th	Standard Double Queen	\$199.00
	Executive King Suite with Hide-bed & Kitchen	\$234.00
July 8 th to July 13 th	Standard Double Queen	\$234.00
	Executive King Suite with Hide-bed & Kitchen	\$254.00
September 24 th to September 27 th	Standard Double Queen	\$145.00
	Executive King Suite with Hide-bed & Kitchen	\$160.00

All provincial sales taxes (5% GST, 8% PST, 3% MRDT) and a \$2 eco fee apply to the above nightly rates.
 Pets – some pet rooms are available in standard rooms, \$25 pet charge per room, per night