

# LEDUC RECREATION CENTRE

## EVACUATION MAP

### MAIN FLOOR

#### DISCOVERY OF FIRE OR OTHER EMERGENCY

- Inform an LRC Staff Member of the emergency.
- Initiate the fire alarm by activating a fire pull station located by all exterior exits.
- Call emergency services  
**Dial 8-9-1-1** from LRC Phone Line or  
**Dial 9-1-1** from cell phone

Provide the following information:

- Leduc Recreation Centre  
**4330 Black Gold Drive**
- Room, Area, Level
- Type of Emergency  
 (Fire, chemical spill, etc.)
- Severity of the situation

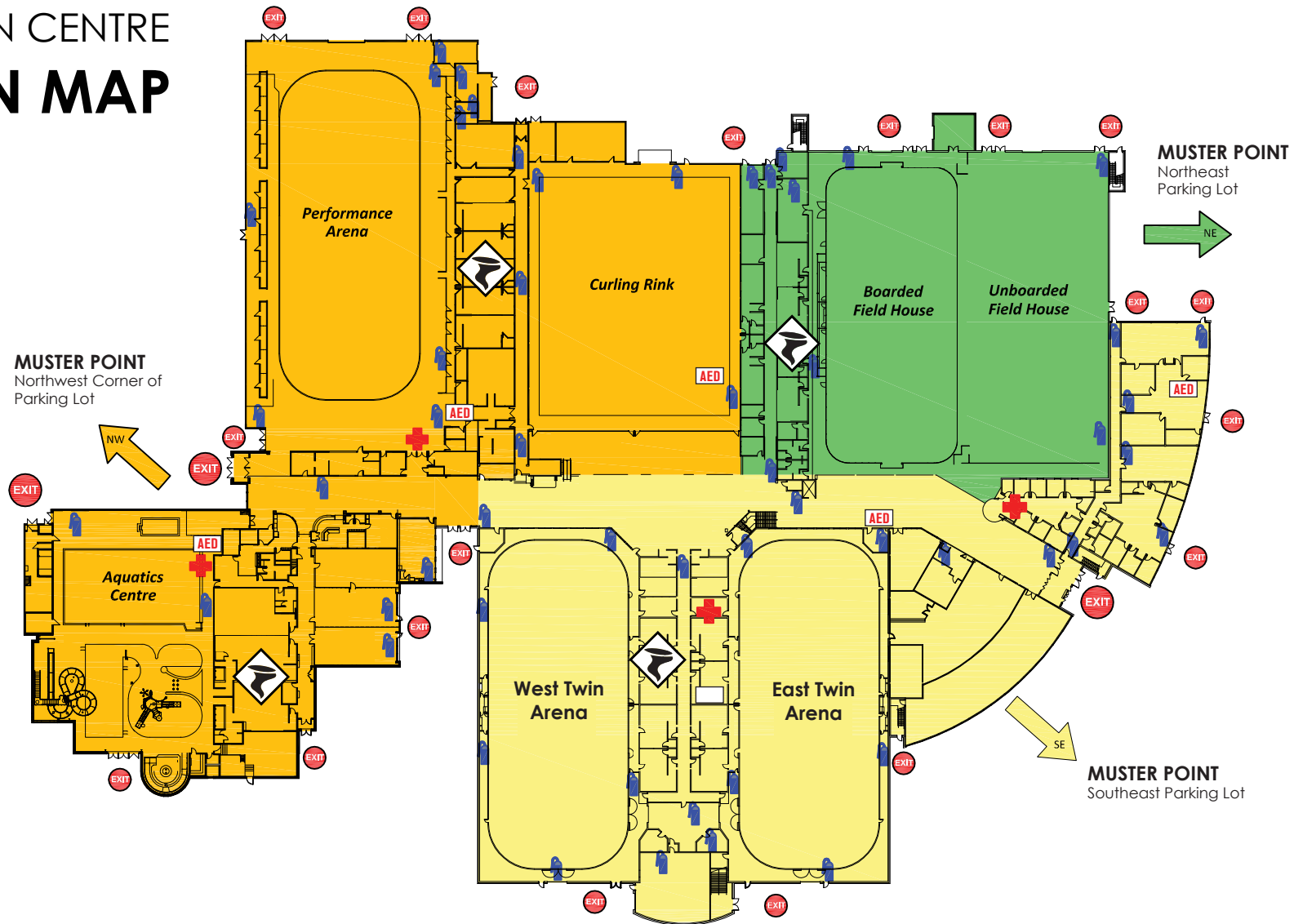
- In case of tornado, proceed to  
**severe weather shelter (changerooms)**

#### IN THE EVENT OF A BUILDING ALARM

- You may hear a loud bell alarm that may be accompanied by light strobes
- Follow Evacuation Procedure below

#### EVACUATION PROCEDURE

- Act on instructions of the Evacuation Marshall
- Exit the building using the nearest safe Exit
- Do not delay in collecting personal possessions
- Do not rush, push, or overtake other patrons
- Do not use elevators
- Proceed to the designated **Muster Point**
- Do not re-enter the building until advised to do so by emergency personnel



#### LEGEND



Fire Extinguisher



Defibrillator



First Aid Station



Severe Weather Shelter

#### MUSTER POINTS

Northwest Corner of Parking Lot

Northeast Parking Lot

Southeast Parking Lot

# LEDUC RECREATION CENTRE

## EVACUATION MAP

### SECOND FLOOR

#### DISCOVERY OF FIRE OR OTHER EMERGENCY

- Inform an LRC Staff Member of the emergency.
- Initiate the fire alarm by activating a fire pull station located by all exterior exits.
- Call emergency services  
**Dial 8-9-1-1** from LRC Phone Line or  
**Dial 9-1-1** from cell phone

Provide the following information:

- Leduc Recreation Centre  
**4330 Black Gold Drive**
- Room, Area, Level
- Type of Emergency  
 (Fire, chemical spill, etc.)
- Severity of the situation



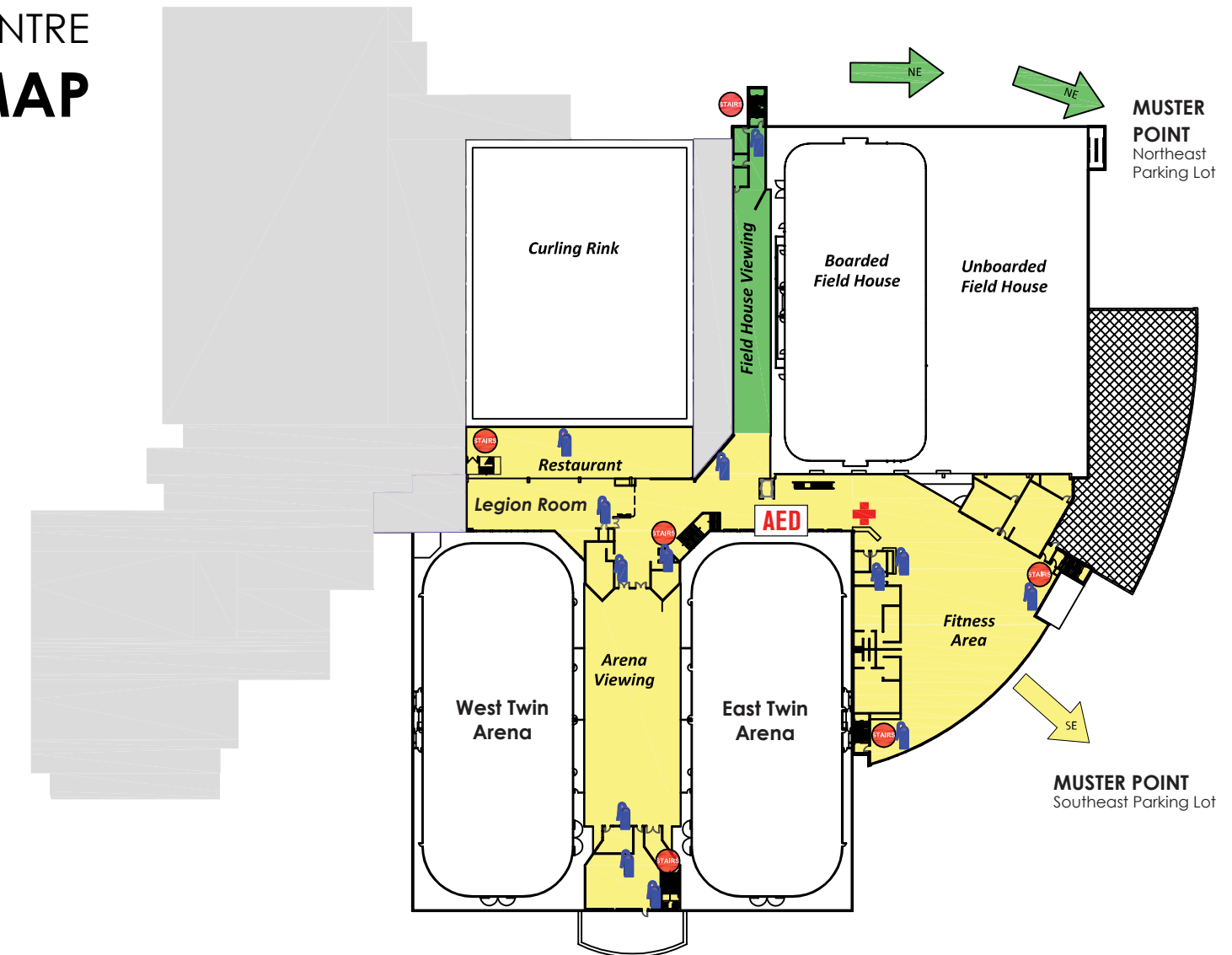
- In case of tornado, proceed to severe weather shelter (changerooms)

#### IN THE EVENT OF A BUILDING ALARM

- You may hear a loud bell alarm that may be accompanied by light strobes
- Follow Evacuation Procedure below

#### EVACUATION PROCEDURE

- Act on instructions of the Evacuation Marshall
- Exit the building using the nearest safe Exit
- Do not delay in collecting personal possessions
- Do not rush, push, or overtake other patrons
- Do not use elevators
- Proceed to the designated **Muster Point**
- Do not re-enter the building until advised to do so by emergency personnel



#### LEGEND



Fire Extinguisher



Defibrillator



First Aid Station

#### MUSTER POINTS

Northeast Parking Lot

Southeast Parking Lot

# LEDUC RECREATION CENTRE

## EVACUATION MAP

### THIRD FLOOR

#### DISCOVERY OF FIRE OR OTHER EMERGENCY

- Inform an LRC Staff Member of the emergency.
- Initiate the fire alarm by activating a fire pull station located by all exterior exits.
- Call emergency services  
**Dial 8-9-1-1** from LRC Phone Line or  
**Dial 9-1-1** from cell phone

Provide the following information:

- Leduc Recreation Centre
- **4330 Black Gold Drive**
- Room, Area, Level
- Type of Emergency (Fire, chemical spill, etc.)
- Severity of the situation



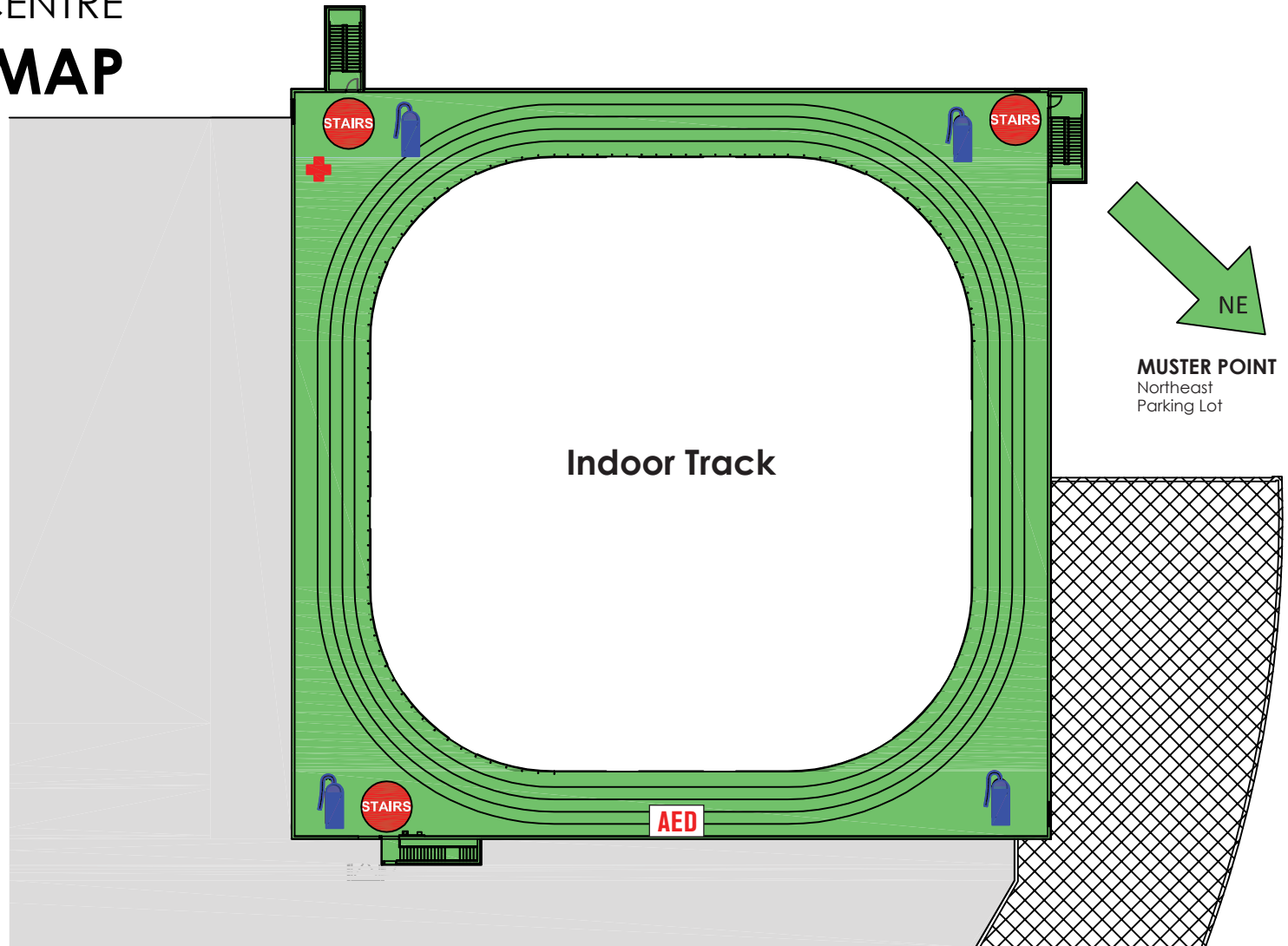
- In case of tornado, proceed to severe weather shelter (changerooms)

#### IN THE EVENT OF A BUILDING ALARM

- You may hear a loud bell alarm that may be accompanied by light strobes
- Follow Evacuation Procedure below

#### EVACUATION PROCEDURE

- Act on instructions of the Evacuation Marshall
- Exit the building using the nearest safe Exit
- Do not delay in collecting personal possessions
- Do not rush, push, or overtake other patrons
- Do not use elevators
- Proceed to the designated **Muster Point**
- Do not re-enter the building until advised to do so by emergency personnel



#### LEGEND



Fire Extinguisher



Defibrillator



First Aid Station

#### MUSTER POINT

Northeast Parking Lot