

# COVID-19 UPDATE

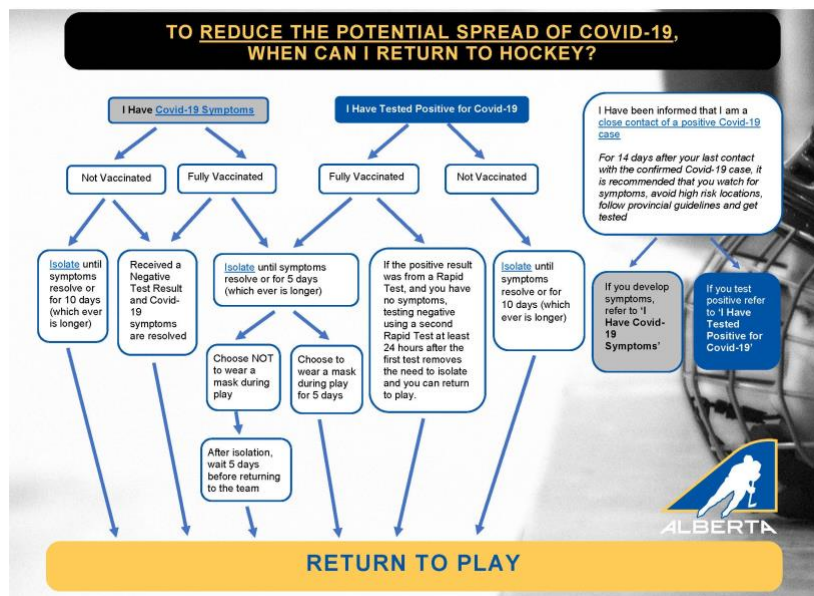
MAPLE LEAF ATHLETIC CLUB – JANUARY 13<sup>TH</sup>, 2021

## TEAM TRAVEL

Team travel will be business as usual, and teams are expected to follow the rules of Traxx Coachline and their specific hotels. At this time, Traxx is allowing food and drinks, but masks are otherwise required for the duration of the trip. If a player or member of coaching staff becomes symptomatic during a team trip, they will be required to complete a rapid test and begin their isolation (as they would in the city). We are advising teams to bring a few boxes of rapid tests on road trips, and have some connections if kits are required beforehand. IF an individual tests positive for COVID-19, families will be responsible for transporting them back home, and they will no longer be allowed on the team bus.

## RETURN TO PLAY

The Maple Leaf Athletic Club follows Hockey Alberta guidelines and will be following their graph (attached below). Players must abide by Hockey Alberta and Government ruling, no exceptions. Effective immediately, now that there is clarity on Government regulations, if any member is not following guidelines, they will be required to spend the full ten days away from team activities. If clarity is needed, please feel free to contact mlaheadtrainer@outlook.com.



We trust that families and members of the Maple Leaf Athletic Club will abide by the current COVID-19 rules and keep each other safe in the process.

**THANK YOU FOR YOUR COOPERATION AND PATIENCE!**

**MAPLE LEAF ATHLETIC CLUB**