

DIRECTIONS TO METRO LEAGUE FIELDS

Alexandra Williams Memorial complex – Bay Bulls

Go to the Robert E. Howlett Memorial Drive (Goulds By-pass) and drive to the end of this road toward the Southern Shore. When you reach the end of the Goulds By-pass, you're now on the Southern Shore Highway and keep on driving until you reach Bay Bulls. Then when you see Foodland on your left, take the next right (over the bridge, and immediately before Ryan's Funeral Home). Drive in this road (Cemetery Lane West) and you'll see the Alexandra Williams Memorial Complex on your right.

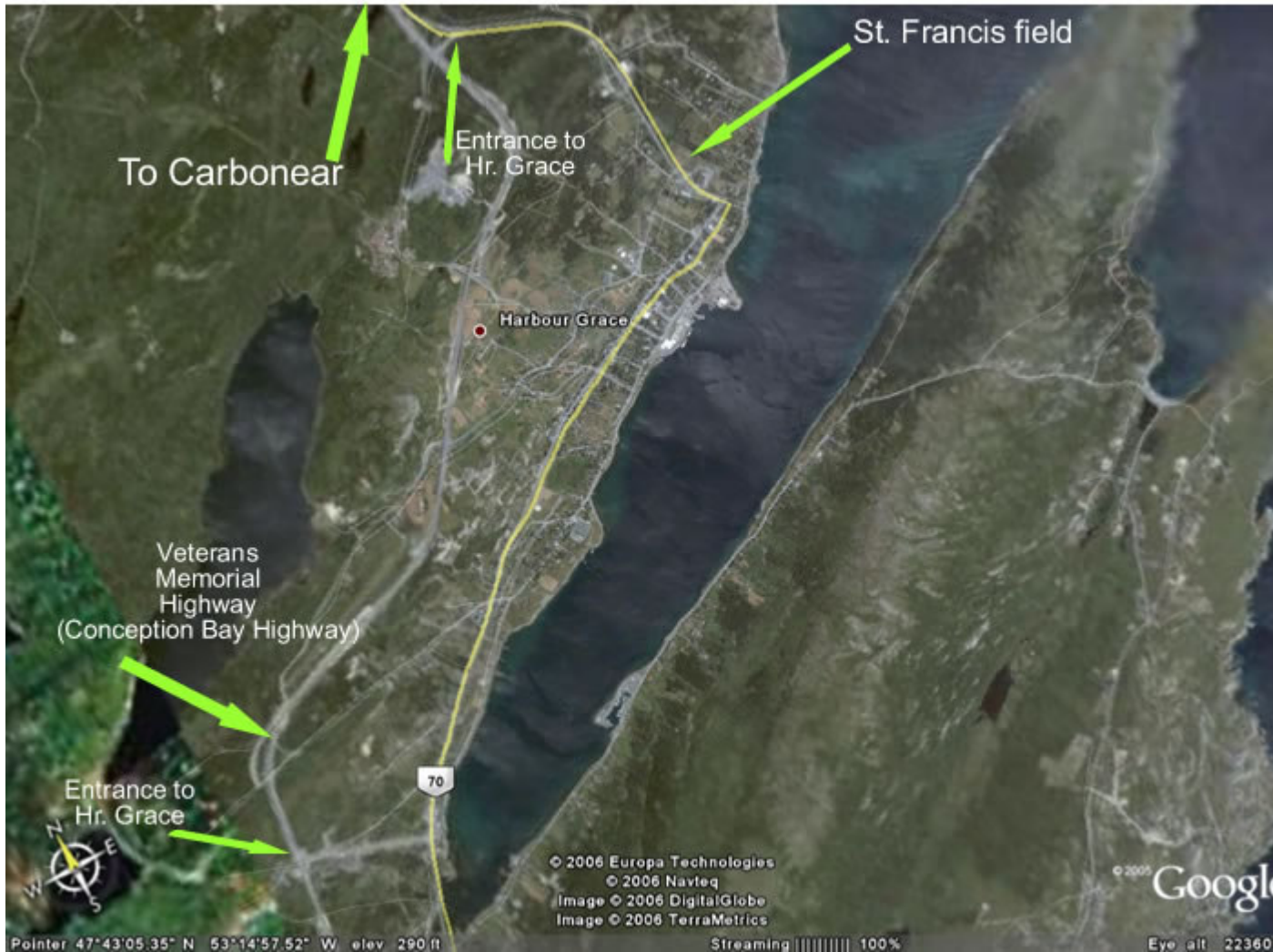
Brother Eagan – St. John's

Corner of Warbury and Leslie Street. Leslie street is off Hamilton Ave. Turn onto Leslie Street off Hamilton Ave, turn right onto Warbury and the field is on the left.

Carbonear and Harbour Grace Fields – CBN

<http://www.cbnminorsoccer.com/about.html>

See below for a detailed map and directions to the fields. For those traveling from outside, please take Route 70 off the Trans Canada Highway, then take Veterans Memorial Highway and travel to Harbour Grace and Carbonear.



Dianne Whelan Complex – Paradise

Version 1: Coming in from arterial road, exit onto Topsail road (just before overpass). Drive a good ways down Topsail road as if heading to Topsail field or into CBS. Eventually you will see a large soccer field on your left and just beyond it, the big, blue Acan Windows building. Turn left onto the little road on your left just before passing Acan Windows. Follow the road up the hill and it will take you right to the fields.

Version 2: The fields are located off McNamara Drive, turn left off Topsail Rd between the soccer field and ACAN Windows and then take the third left in front of the Carpentars Training Institute and this leads to the soccer complex. There is a gate that prevents vehicles from parking directly next to the fileds but there are two parking lots available parallel to the lower field.

Eric Williams Memorial Pitch - Goulds

Traveling along the Main Road in Goulds take the immediate left just past the Volunteer Fire Department. Fields are just beyond the skate park and Softball field.

Feildian Grounds – St. John’s

Located on Portugal Cove Road next to the Riverdale Tennis club.

Nugents Field Redbridge Road, Kelligrews (courtesy www.cbssoccer.com)

Coming through CBS the field is located on Red Bridge Road in Kelligrews. Red Bridge Road is the next road on your left after Chester Dawe and is directly across from Foodland which sits on the right hand side of the road. Simply go to the very end as it is the last thing on Red Bridge Road.

If you are coming from the new highway then simply go as far as the highway takes you and it will lead you to Legion Road. At the end of the highway take a left. Then take first right which is Kelliview Avenue (It is directly across from the Kelligrews Stadium). Go to the end of Kelliview Ave. and turn right (this is Red Bridge Rd. and then go to the very end which is the field).

If you are coming from the Holyrood way then stay on the CBS highway and in Kelligrews, Red Bridge Rd. is your 1st right after the Kelligrews Fire Station (which sits on the right) Go to the very end of Red Bridge Rd. to get to the field.

Queen Elizabeth Field Foxtrap Access Road, Foxtrap (courtesy www.cbssoccer.com)

If you are coming from the arterial - CBS highway via St.John's or Mt.Pearl, exit and turn left onto the Foxtrap Access Road. Drive approximately 2kms and you will see Frank Roberts Junior High. The Queen Elizabeth Field is located directly behind the school.

Coming through Conception Bay South, the field is located on the Foxtrap Access Road. The Foxtrap Access Road begins directly across from Taylors Fish Market. Turn left on the lights and drive approximately 5kms until you see Frank Roberts Junior High on your right. The Queen Elizabeth Field is located directly behind the school.

Central Fields– Mt. Pearl

Located off Ruth Avenue, behind Mt. Pearl Intermediate (Junior High) School.

If coming going west on Pitts Memorial Drive, either

- 1) Exit onto Ruby Line and turn left up Old Placentia Road. Drive for a little ways (through the Smallwood drive intersection and turn RIGHT onto Ruth Avenue. Drive past O'Donnell High School. Drive until you see two schools on your LEFT. These schools are Mt. Pearl Senior and Junior High. Turn left into the school's parking lot, drive down between the two schools and come around the back of the Junior High. Central Pitch is the "lowest" pitch.

- 2) Exit onto Ruth Ave directly from Pitts Memorial. Drive straight through the Old Placentia Road intersection, drive past O'Donnell High School. Drive until you see two schools on your LEFT. These schools are Mt. Pearl Senior and Junior High. Turn left into the school's parking lot, drive down between the two schools and come around the back of the Junior High. Central Pitch is the "lowest" pitch (the other one is Sandpitch).

If coming in from Paradise or CBS using Topsail Road, drive down Topsail Road and turn right onto Mount Carson Avenue. Turn right again onto Ruth Avenue. Drive until you see the two schools on your right. Turn right into the school's parking lot, drive down between the two schools and come around the back of the Junior High. Central Pitch is the "lowest" pitch (the other one is Sandpitch).

If coming in from the St. John's area on Topsail road, drive down Topsail Road until you are at the intersection past the really big car dealership – turn left onto Dunn's Road. Keep following the road which changes to Park Avenue and then to Ruth Avenue. When on Ruth Avenue, drive until you see two schools on your RIGHT. These schools are Mt. Pearl Senior and Junior High. Turn right into the school's parking lot, drive down between the two schools and come around the back of the Junior High. Central Pitch is the "lowest" pitch (the other one is Sandpitch).

Smallwood Fields – Mt. Pearl

Fields are located off Smallwood drive in Mt. Pearl. If you are going out on the arterial road, turn off onto Commonwealth Avenue. You go past a couple sets of lights and then turn right onto Smallwood drive. The field will be on your right and there is a sign indicating the Smallwood complex where you turn in.

The upper field is closest to the entrance, across from the blue arena and to your left when you drive in. The middle and lower pitches are down past the new clubhouse. To get to them, just follow the road into the big gravel parking lot.

St. Pat's – St. John's

Located on Carpasian road.

Teakwood Field – Goulds (Southlands)

To get to Teakwood just continue on from the three-way intersection lights where Ruby Line meets the Southlands road. The second left past those lights is Teakwood Avenue. Go straight to the top of Teakwood and just before the dead end at the top there is an opening to the right for a play park area. Park in there and just walk for a minute along the trail. Past the tennis courts, skate park and basketball court on the right you can look to the left and see the field is there on a higher level of ground.

Topsail Field – CBS (courtesy www.cbssoccer.com)

If you are coming from Topsail the field is your next right, Goodland's Road, past the Topsail Fire Station (which is on the left). Topsail Field sits right next to the ocean and the Topsail Soccer Hut faces the water. The Field has 2 entrances, Goodland's Road & Lion's Crescent.

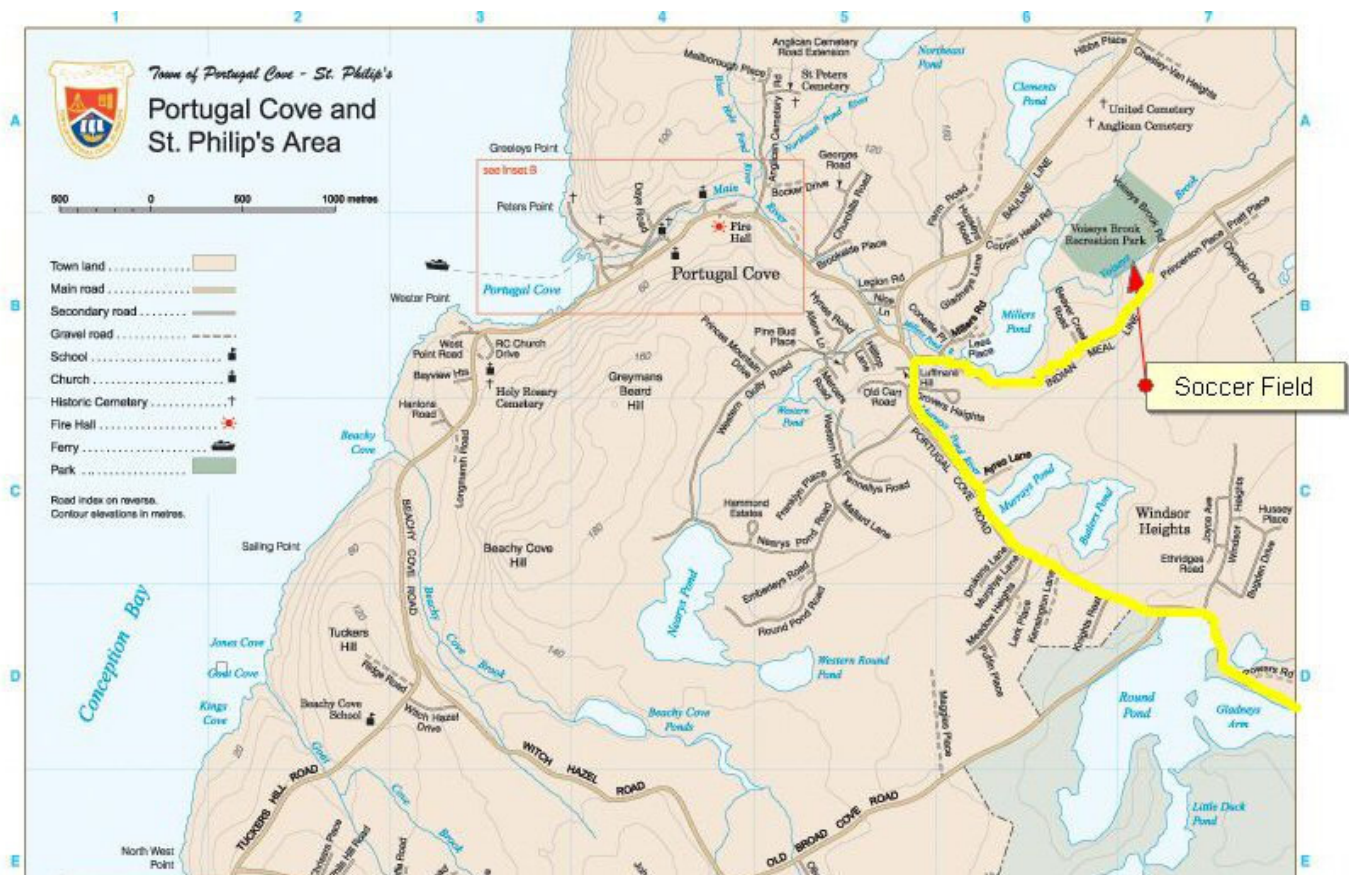
If you are coming from the arterial highway via St. John's or Mt. Pearl then stay in the right lane after the Fowler's Rd. Exit until you reach the Manuels Bridge set of lights. Take a right here and approx. 5km's past the bridge you will see Lion's Crescent on your left. The field can easily

be seen from the main highway.

If you are coming from Kelligrews direction then take the main highway until you reach the Manuels Bridge set of lights. Take a left at the lights and about 5km's past the bridge you will see Lion's Crescent on your left. The field can easily be seen from the main highway.

Voiseys Brook Recreation Complex – Portugal Cove/St. Philip's

Below is a map with the yellow line bringing you right to the field if you come through the Windsor Lake area (bottom right hand corner of map). You come into Portugal Cove and then onto Indian Meal Line which is on the right hand side. There is no official street sign there but there is a town sign that gives a number of landmarks including Voiseys Brook Park. Once on Indian Meal Line the field is approximately 2 kms in on the left hand side. There is a sign (Voiseys Brook Recreation Complex) there and you turn down where the sign is.



Wishing Well East and West – St. John's

If coming into St. John's on Columbus Drive, following Columbus drive until the intersection with Empire Avenue. Turn onto Empire Avenue and the two fields will be visible on your left. Turn in by the little green building.

If coming into St. John's on Kenmount Road or Thorburn road, keep driving as the road changes to Freshwater road. Turn left when Freshwater intersects with Empire Ave. Drive until you see the two fields on your right and turn into the facility at the little green building.

Wishing Well East is the field closest to the baseball pitch. Wishing Well West is closest to the rugby pitch.

More fields to come!...