



RHRA – Team Formation – Level of Play Policy

April 2013

PURPOSE

Develop a policy that provides RHRA with:

- Well defined criteria that all coaches, players & parents can follow, understand & support
- Basic information to facilitate an open and fair process in the selection of all teams
- Provide opportunities for qualified players to play at the AA/A level
- Provide opportunities for interested players to play at the Regional level
- Ensure the future growth of Ringette is taken into consideration

POLICY IN A NUTSHELL

- If level of play (AA, A, etc.) at the players age (U12, U14, etc.) is available in RHRA, the player is expected to participate at that level.
- RHRA does not support playing out of age anywhere when teams are available.

POLICY FUNDAMENTAL PILLARS

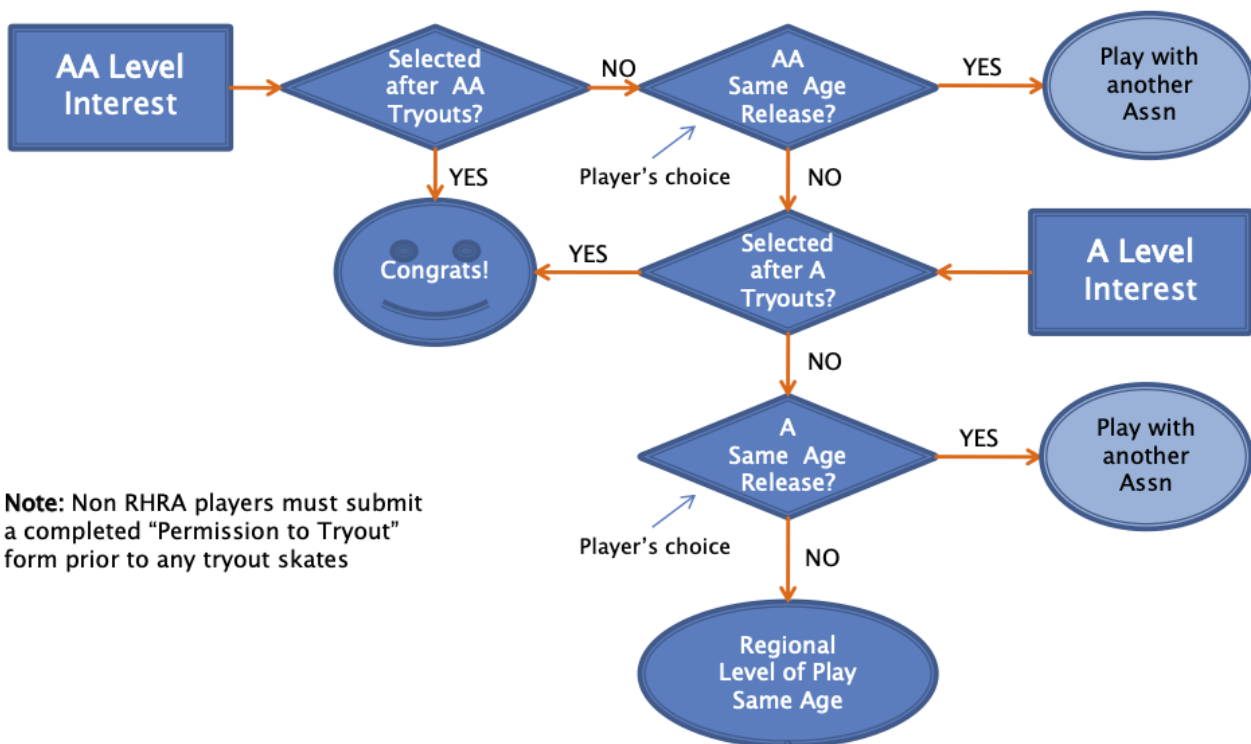
- Players play at their birth age level (U12, etc.)
- Primary focus of Provincial Teams
 - AA = Exceptional Skill Elite Team
 - A = Team Formation
- Primary focus of Regional Teams
 - = Every player has a place to play
- Level of play is different than age (per RO)
 - AA
 - A (includes U12P)
 - B and C (Regional)
 - Recreational
 - House League
- Sport Canada's Long Term Athletic Development (LTAD) will dictate team formation up to, but stop at, U12 (similar to soccer stopping at U12)
- Multiple Regional Teams above U12
 - Based on "Every girl has a place to play"
 - Primary goal is balanced skill teams (LTAD concept)
 - Southern region does not have minor/major division distinction
 - Southern tournament levels rarely have a distinction
 - Opportunity to continue developing all girls (ala LTAD)
 - Prevents creation of "have's and have not's" within RHRA Regional play
 - Will require player grading and selection process

- Exception is when Regional Association has minor/major separation
- Multiple A-Level Provincial Teams at the same age
 - The preference is to align players vertically meaning the strongest play on one team (vs. distributing the talent equally)
 - This supports the RHRA goal to develop elite level players and teams from A-level for future AA-level play

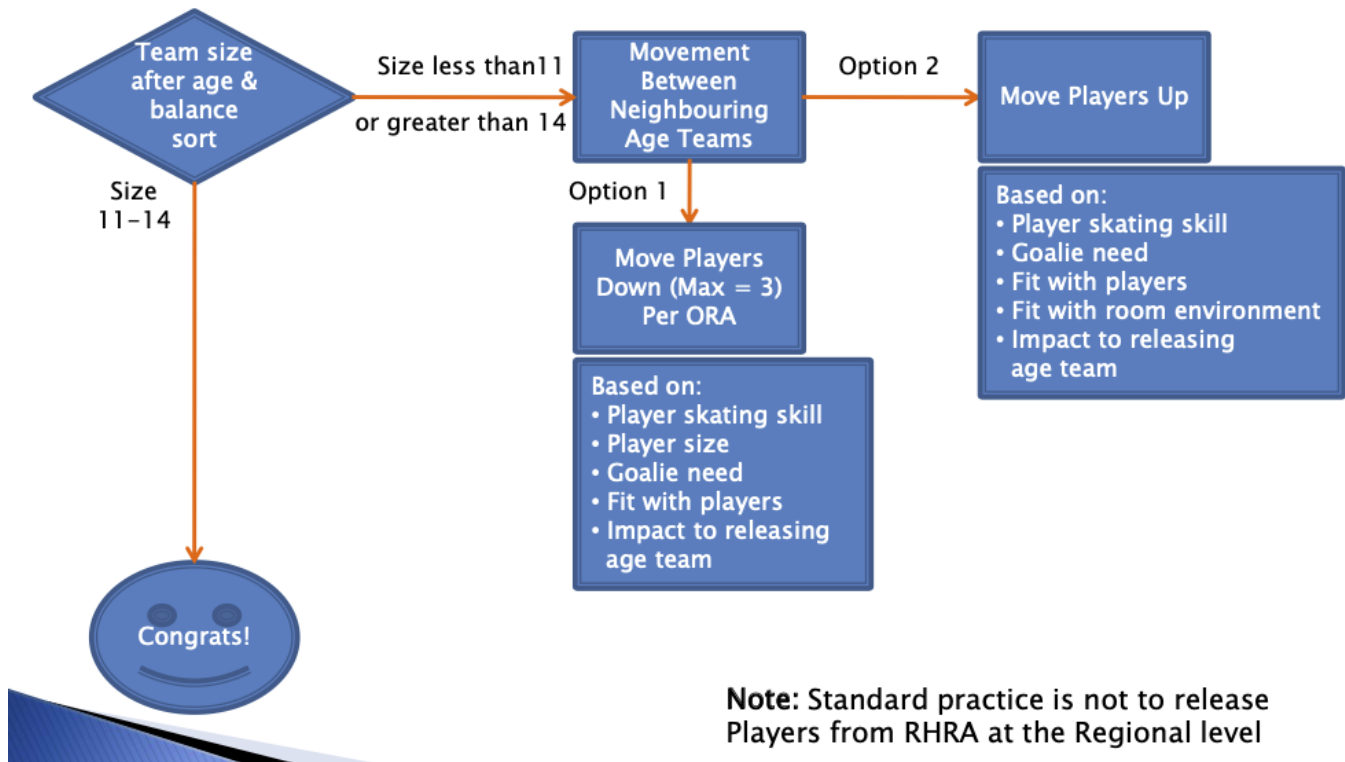
POLICY SCOPE

- RHRA supports players trying out for age appropriate provincial teams in other associations simultaneously & will sign try-out forms (but not releases)
- RHRA Policy will apply to out of Association players wanting to play with RHRA
 - Will have to screen birth year at tryout skates
- Policy will also apply to Spring Ringette
 - Players are encouraged to play in their age group for the upcoming season
- **Please Note:** RHRA does not currently have quotas for local vs. non-RHRA players on A/AA teams; however, all coaches are encouraged to select/develop local players wherever possible

PROVINCIAL TEAMS: ELITE FORMATION



REGIONAL TEAMS: EVERY PLAYER HAS A PLACE TO PLAY



EXCEPTION REQUEST PROCESS

- Process created to allow any player, parent or coach to request an exception
- The Exception Request Form must be completed and submitted prior to the specified dates each year
- An Exception Committee will review each request and provide a decision rationale with every approval or denial
- Any approved exceptions are only valid for one (1) season

EXCEPTION COMMITTEE

- Consists of 3 RHRA Exec + 2 volunteers (i.e. parents, coaches)
 - Chair = Grievance Committee Chair
 - Two other Exec members are:
 - Registrar (knows players)
 - Coaching Coordinator (knows coaches)
 - Alternate = VP or other non-conflicted Exec member
 - All are experienced & familiar with ORA guidelines
 - Two non-Executive volunteers (selected by the Chair)

- All 5 members must not have any conflicts with any party involved with the exception request
- Committee will deliver all decisions at the next available RHRA Exec meeting to be noted in the minutes
- Any exceptions granted will apply for one (1) year only