



RAMP GameSheets Application Guide

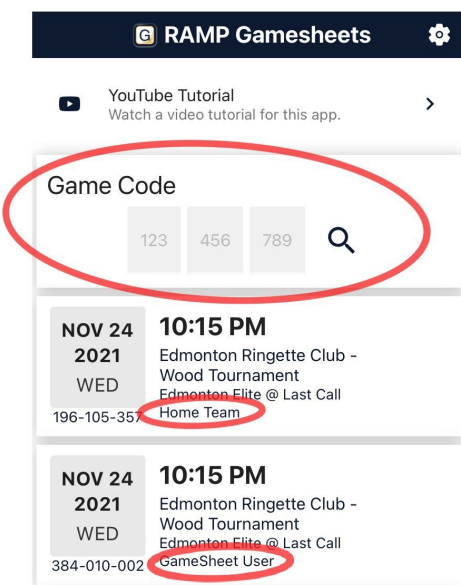
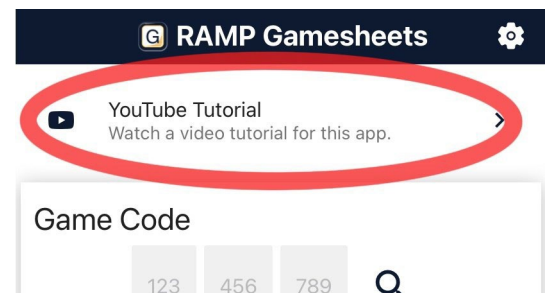


1. INSTALL RAMP ELECTRONIC GAME SHEET APP

The Head Coach (or designated Team Staff member), Scorekeeper(s), and Officials will need to download the RAMP GameSheets App onto their phone/ipad/tablet

Each person who will be using the app will need to create an account on the App. This is the same account login/password as the RAMP TeamApp, if you have used this previously. This account must be your own unique account; you cannot share with someone else.

At the top of the home page of the App there is a link to a YouTube Tutorial (approx. 14 minutes).



2. ADD THE GAME CODES TO YOUR PHONE/IPAD/TABLET

The Games Codes for your games can be found on your team web page. On the left-hand side menu of the Dashboard, under "League Gamesheet AppCodes".

All codes are nine digits (###-###-###) and are unique for each game **AND ROLE (HOME/VISITOR/GAMESHEET/OFFICIAL)**.

Team Staff: Add the Home Code or Visitor Code.

Scorekeepers: Add the Gamesheet Code.

TEAM STAFF

Ensure your designated **Team Staff** and **Scorekeeper** have access to data or Wifi to access the GameSheet App. The arena should have public WiFi Access.

Enter the applicable Home or Visitor Game Code to access the Gamesheet. This will download the game to your phone/ipad/tablet and can be done ahead of time. Home team, remind your scorekeeper to do the same using the GameSheet Code.

Under Roster Tab  : Select **Players and Team staff**

Check off which players are present, the players are defaulted to red, so you will need to activate all players in attendance.

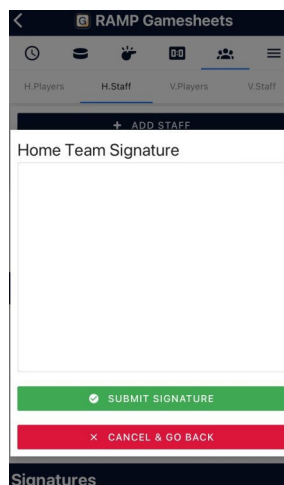
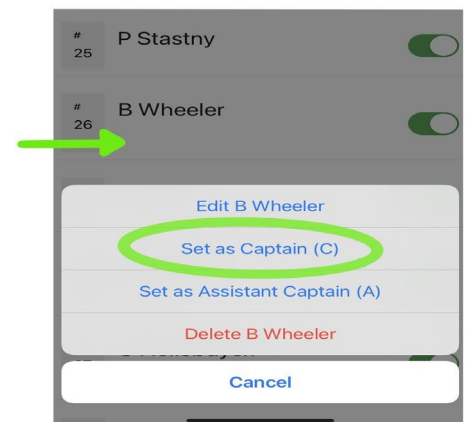
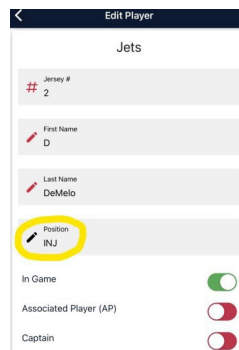
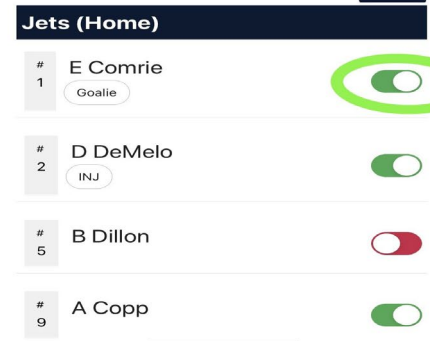
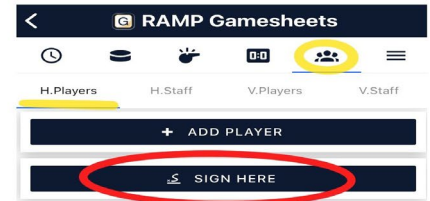
Designate up to three total Captains and/or Assistant Captains by selecting the players name on the roster, "Set as Captain (C)" or "Set as Assistant Captain (A)".

Indicate **Goalies**, by selecting Edit <player name> and adding "Goalie" as the position, if not already marked on your roster.

If a player is **INJURED** and will be on your bench for the game, not dressed, write **INJ** in the position field.

The rosters are linked directly to the name and numbers entered on the RAMP website, but if you need to make changes you can Edit the player name or jersey number.

Staff - Activate the Team Staff that will be on the bench during games. When roster is accurate, click "**SIGN HERE**" and add signature



Please note it will be your responsibility before each game to confirm your athletes and team staff.