

# **SPS Fuzion Player Evaluation Process**

## **Schedule “A” (Novice and Atom)**

Schedule “A” will consist of the evaluation process using a weighted scoring system:

Novice: 100% will be based on timed drills

Atom: 60% is based on timed drills and 40% on their game play.

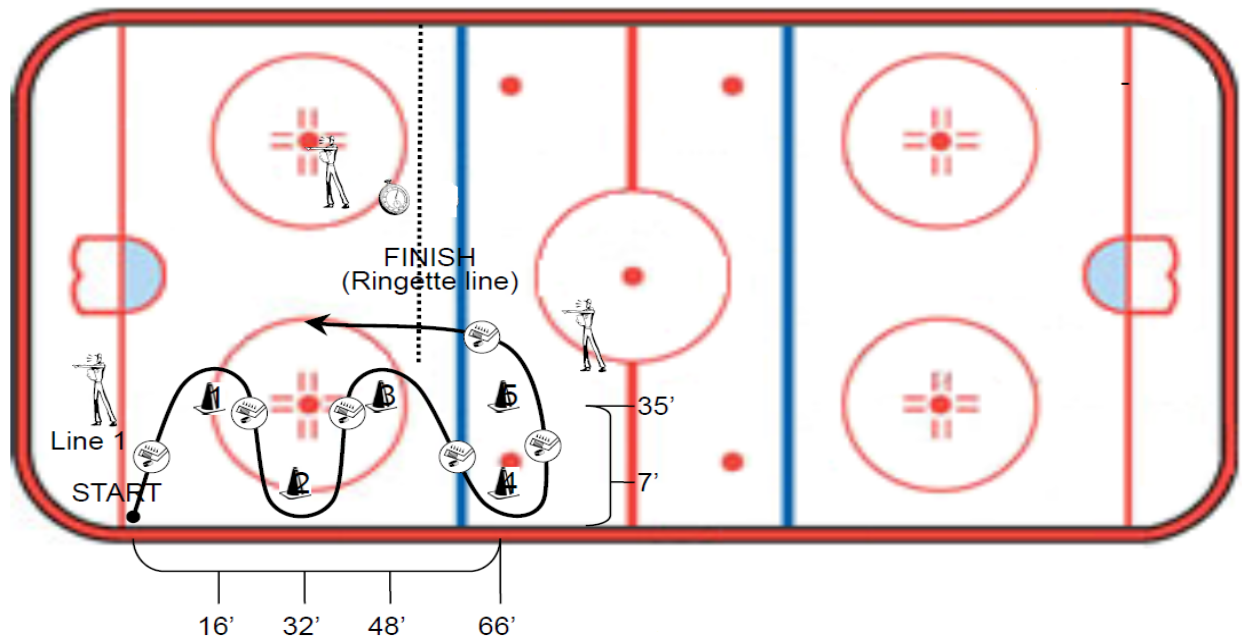
Technical evaluations will include timed skating drills. The timing portion of the evaluation gives us an objective evaluation.

Game evaluations will include the following criteria, hockey IQ, individual tactics, team tactics, team play and their passing and shooting abilities and will give us a subjective evaluation.

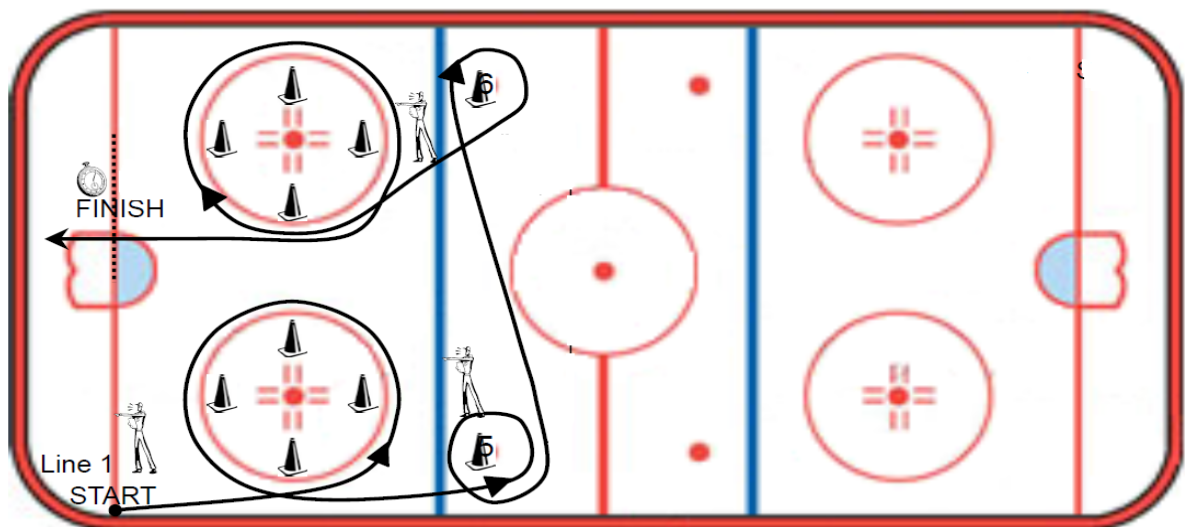
Game Evaluation will be based on 5 on 5 full ice game play. Players will play all positions during this game so that evaluators get a chance to see them in all positions to ensure all players get evaluated thoroughly.

The following drills will be used for evaluation of their technical ability:

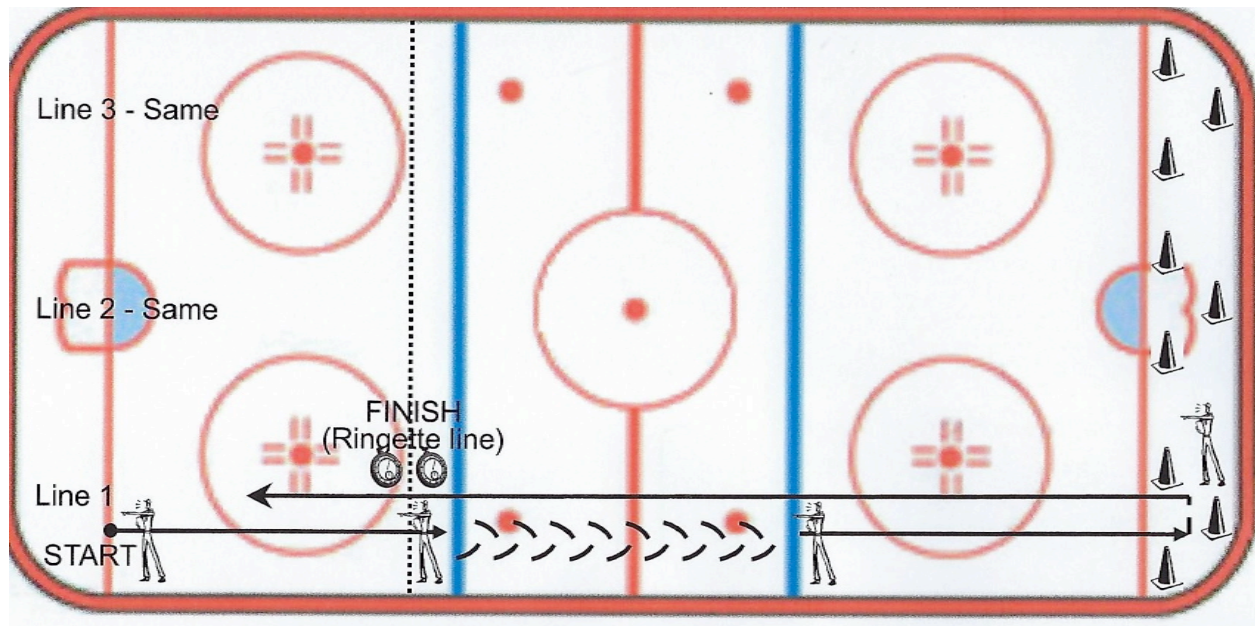
Drill number 1 to be completed with a puck



Drill number 2 to be completed without a puck



**Drill Number 3 to be completed without a puck.**



### Details:

This drill is run the same in all arenas:

Skate forward from the goal line to the blue line;

- Skate backwards between the blue lines;
- Skate forward from blue line to goal line;
- Skate into triangle and stop behind the goal line (two pylons on the goal line and one pylon ~24" back)
- Skate forward back to the Ringette line