

# **SPS Fuzion Player Evaluation Process**

## **Schedule “D” Midget**

**Schedule “D” will consist of the evaluation process using a weighted scoring system that will include a score 40% of their tactical score and 60% of game play score.**

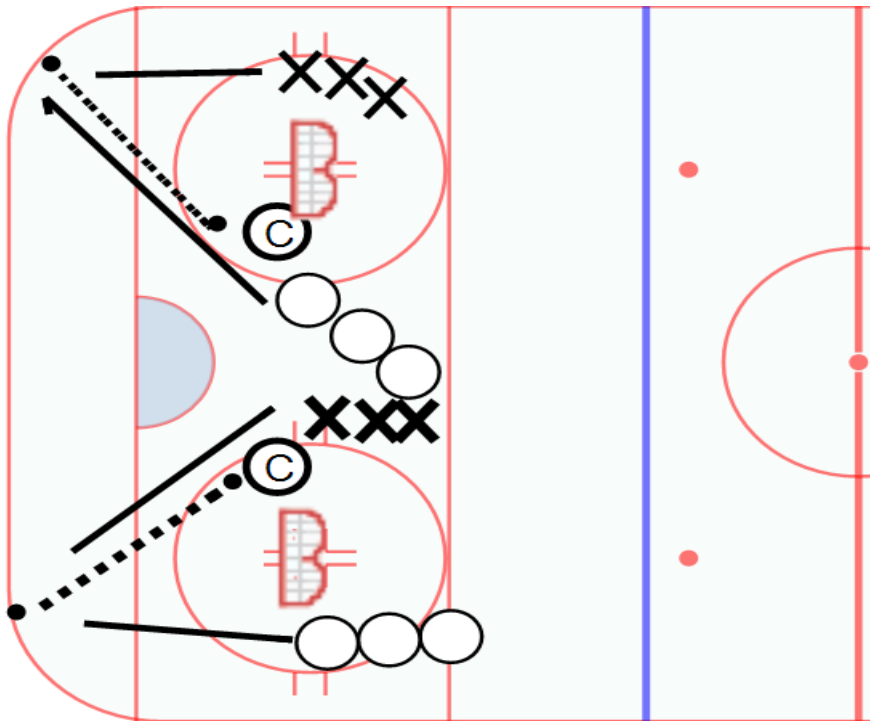
**Tactical evaluations will include a series of situational drills that will be evaluated based on individual tactics, team tactics, small area games.**

**Game evaluations will include the following criteria, hockey IQ, individual tactics, team tactics, team play and their passing and shooting abilities.**

**Game Evaluation will be based on 5 on 5 full ice positional game play. Players will play the positions best suited to what they have played in the past and they will be evaluated at that position. Evaluators may opt to ask coaches to move players during the period intermission. Players may request the same changes.**

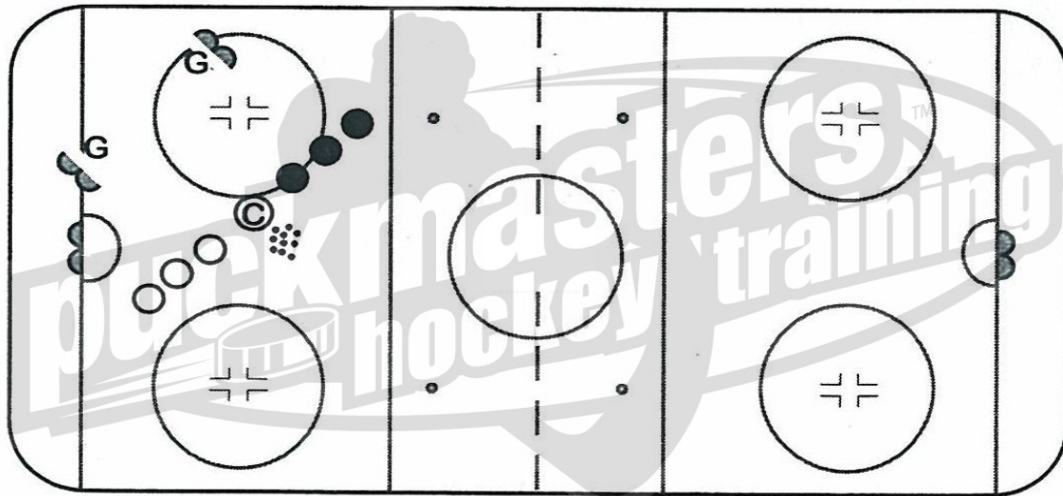
The following drills will be used to evaluate their tactical abilities.

**Drill #1**      **1 on 1 out of the corner**



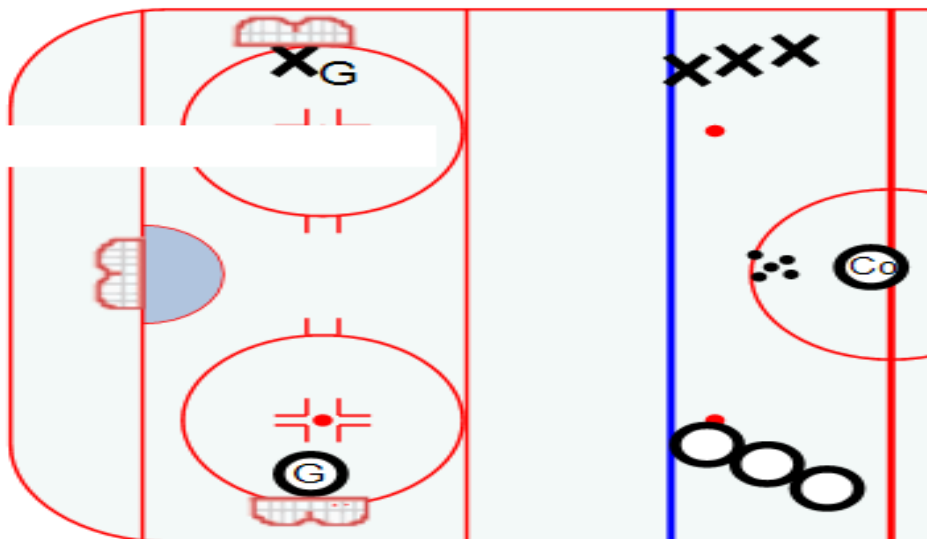
Align net facing the corner on the dot, one group will line up on one side of the net the other on the other side. Players will play hard 1 on 1 for 20 seconds, evaluating individual tactic, quick feet, puck protection, dekes, fakes and battling skills.

**Drill #2 2 on 2 out of the corner**



Align nets in one corner fairly close together. Players must play 2-on-2 hard for 20 seconds evaluating, quick hands, good puck control skills, shooting, passing and decision making.

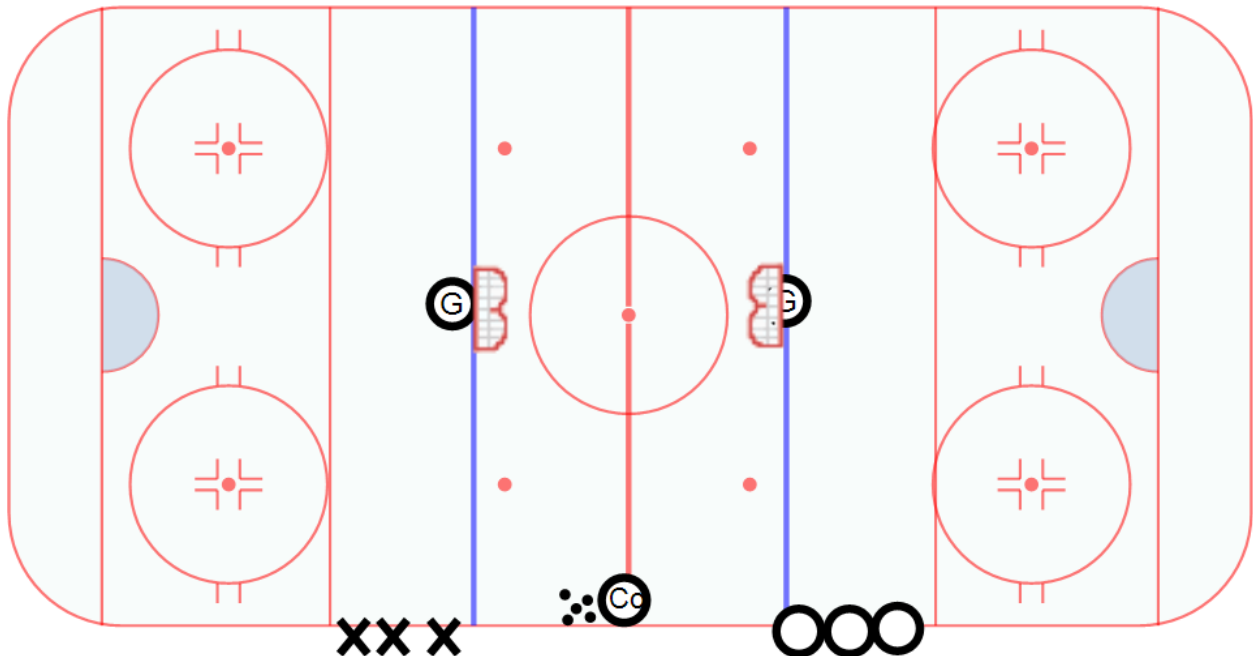
**Drill number #3 Cross ice 3 on 3 game.**



Align nets across from each other. Players will play cross ice 3 on 3 (may switch to coaches choice). Players must play 3 on 3 hard for 20 seconds evaluating, team tactics, puck control skills, shooting, passing and hockey IQ.

**Drill#4**

**4 on 4.**



Align nets facing away from each other players will come out based on coaches whistle. Players will be able to score on either net, evaluating team tactics, passing shooting, and hockey IQ.