



EMERGENCY ACTION PLAN

Douglas Park

141 Bunting Rd. St. Catharines ON L2P 3G6



Emergency Phone: 9-1-1

Facility Address

Douglas Park

141 Bunting Rd.

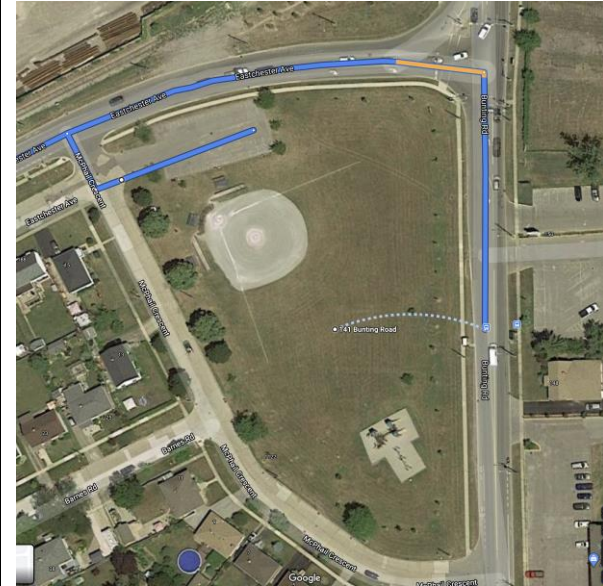
St. Catharines ON L2P 3G6

Hospital Location

**Niagara Health Services
St. Catharines Site Hospital**

**1200 Fourth Avenue
St. Catharines, ON
L2S 0A9
Tel: (905) 378-4647**

*Approx. 7.1 km
Approx. 10 mins
Directions on Page 2 (over)*



Charge & Call Person Details

Team Name	_____	Division	_____
Charge Person (1 st Option)	_____	Call Person (1 st Option)	_____
Charge Person (2 nd Option)	_____	Call Person (2 nd Option)	_____

Roles and Responsibilities

CHARGE PERSON:

- Clear the risk of further harm to the injured person by securing the area and shelter the injured person from the elements.
- Designate who is in charge of the other participants.
- Protect yourself (wear gloves if she/he is in contact with any body fluids such as blood).
- Assess ABCs (check that airway is clear, breathing and pulse are present, nor major bleeding, etc.).
- Wait by the injured person until EMS arrives and the injured person is transported.
- Fill out and submit the Injury Report Form (website).

CALL PERSON:

- Call 9-1-1 for Emergency help.
- Provide all necessary information to dispatch (eg. Facility location, Diamond #, nature of injury, what if any first aid has been done).
- Clear any traffic from the entrance/access road before EMS arrives.
- **Access to diamond is off McPhail.**
- Wait by the entrance to the facility to direct the ambulance when it arrives.
- Call the emergency contact person listed on the injured medical profile or contact list.



EMERGENCY ACTION PLAN

Douglas Park

141 Bunting Ave, St.Catharines ON L2P 3G6



Directions to NHS – St.Catharines Site Hospital – 7.1 kms (approx. 10 mins)

Douglas Park

141 Bunting Ave, St. Catharines, ON L2P 3T6

Directions are from parking lot off McPhail

1. Turn left onto Eastchester Crescent/Regional Rd 91
2. Turn right onto Geneva St/Regional Rd 46(signs for Ontario 406 N)
3. Turn right to merge onto ON-406 N
4. Use the right 2 lanes to take the Regional Road 77 W/Fourth Avenue exit
5. Merge onto Fourth Ave/Regional Rd 77
 - **Continue to follow Regional Rd 77**

St. Catharines Hospital

1200 Fourth Ave, St. Catharines, ON

