



# EMERGENCY ACTION PLAN

## Fusion 1 Sportsplex

40 Neilson Ave. St. Catharines, ON L2M 5V9



**Emergency Phone: 9-1-1**

### Facility Address

**Fusion 1 Sportsplex**

**40 Neilson Ave.**

**St.Catharines ON L2M 5V9**

### Hospital Location

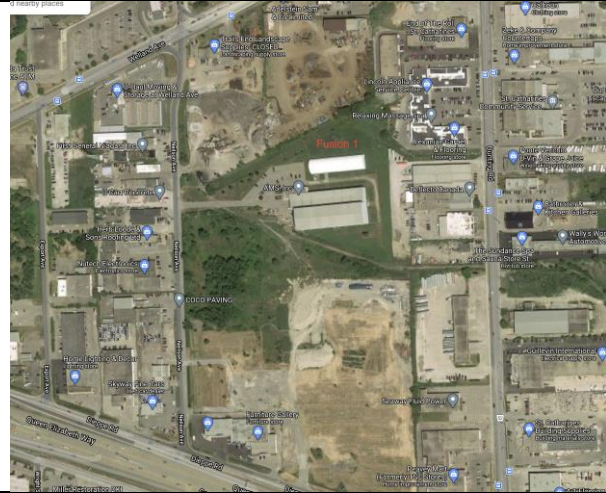
**Niagara Health Services  
St. Catharines Site Hospital**

**1200 Fourth Avenue  
St. Catharines, ON  
L2S 0A9  
Tel: (905) 378-4647**

*Approx. 10.2 km*

*Approx. 10 mins*

**Directions on Page 2 (over)**



### Charge & Call Person Details

Team Name	_____	Division	_____
Charge Person (1 <sup>st</sup> Option)	_____	Call Person (1 <sup>st</sup> Option)	_____
Charge Person (2 <sup>nd</sup> Option)	_____	Call Person (2 <sup>nd</sup> Option)	_____

### Roles and Responsibilities

#### CHARGE PERSON:

- Clear the risk of further harm to the injured person by securing the area and shelter the injured person from the elements.
- Designate who is in charge of the other participants.
- Protect yourself (wear gloves if she/he is in contact with any body fluids such as blood).
- Assess ABCs (check that airway is clear, breathing and pulse are present, nor major bleeding, etc.).
- Wait by the injured person until EMS arrives and the injured person is transported.
- Fill out and submit the Injury Report Form (website).

#### CALL PERSON:

- Call 9-1-1 for Emergency help.
- Provide all necessary information to dispatch (eg. Facility location, Diamond #, nature of injury, what if first aid has been done).
- Clear any traffic from the entrance/access road before EMS arrives.
- **Wait by the entrance to the facility to direct the ambulance when it arrives.**
- Call the emergency contact person listed on the injured medical profile or contact list.



# EMERGENCY ACTION PLAN

## Fusion 1 Sportsplex

40 Neilson Ave., St. Catharines ON L2M 5V9



### Directions to NHS – St.Catharines Site Hospital – 10.2 kms (approx. 10 mins)

#### Fusion 1 Sportsplex

40 Neilson Ave, St. Catharines, ON L2M 5V9

1. Turn left onto Neilson Ave
2. Right onto Dieppe Rd.
3. Use the left lane to merge onto QEW Toronto via ramp
4. Take exit 49 for N. Service Rd toward Third St. - stay right
5. Left onto Third St. Louth
6. Left onto Fourth Ave/Regional Rd 77
  - **Continue to follow Regional Rd 77**

#### St. Catharines Hospital

1200 Fourth Ave, St. Catharines, ON

