



EMERGENCY ACTION PLAN

Joe McCaffery Sports Park #2

61 Vansickle Rd. St.Catharines ON L2S 3W4



Emergency Phone: 9-1-1

Facility Address

Joe McCaffery Sports Park #2

61 Vansickle.

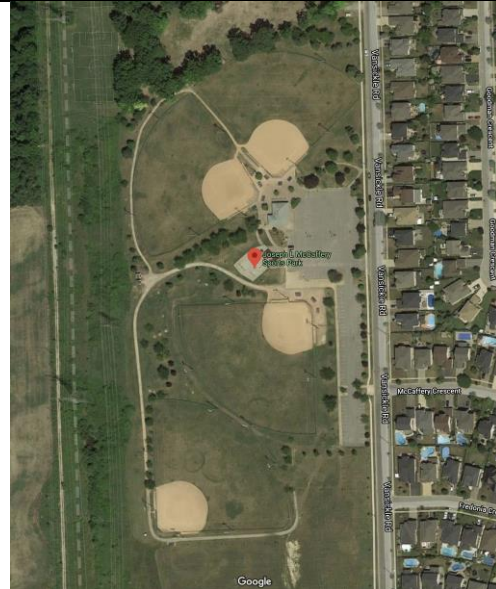
St.Catharines ON L2S 3W4

Hospital Location

**Niagara Health Services
St. Catharines Site Hospital**

**1200 Fourth Avenue
St. Catharines, ON
L2S 0A9
Tel: (905) 378-4647**

*Approx. 4.1 km
Approx. 7 mins
Directions on Page 2 (over)*



Charge & Call Person Details

Team Name	_____	Division	_____
Charge Person (1 st Option)	_____	Call Person (1 st Option)	_____
Charge Person (2 nd Option)	_____	Call Person (2 nd Option)	_____

Roles and Responsibilities

CHARGE PERSON:

- Clear the risk of further harm to the injured person by securing the area and shelter the injured person from the elements.
- Designate who is in charge of the other participants.
- Protect yourself (wear gloves if she/he is in contact with any body fluids such as blood).
- Assess ABCs (check that airway is clear, breathing and pulse are present, nor major bleeding, etc.).
- Wait by the injured person until EMS arrives and the injured person is transported.
- Fill out and submit the Injury Report Form (website).

CALL PERSON:

- Call 9-1-1 for Emergency help.
- Provide all necessary information to dispatch (eg. Facility location, Diamond #, nature of injury, what if any first aid has been done).
- **Diamond 2 – to the right of the entrance – left of Diamond 1**
- Clear any traffic from the entrance/access road before EMS arrives.
- Wait by the entrance to the facility to direct the ambulance when it arrives.
- Call the emergency contact person listed on the injured medical profile or contact list.



EMERGENCY ACTION PLAN

Joe McCaffery Sports Park #2

61 Vansickle Rd., St. Catharines ON L2S 3W4



Directions to NHS – St.Catharines Site Hospital – 4.1 kms (approx. 7mins)

Joe McCaffery Sports Park #2

61 Vansickle Rd., St. Catharines, ON L2S 3W4

1. Left out of the parking lot onto Vansickle Ave.
2. Left onto St. Paul St. W.
3. Right onto First St. Louth – Hospital on Left

St. Catharines Hospital

1200 Fourth Ave, St. Catharines, ON

