



EMERGENCY ACTION PLAN

Joe McCaffery Sports Park #3

61 Vansickle Rd. St.Catharines ON L2S 3W4



Emergency Phone: 9-1-1

Facility Address

Joe McCaffery Sports Park #3

61 Vansickle.

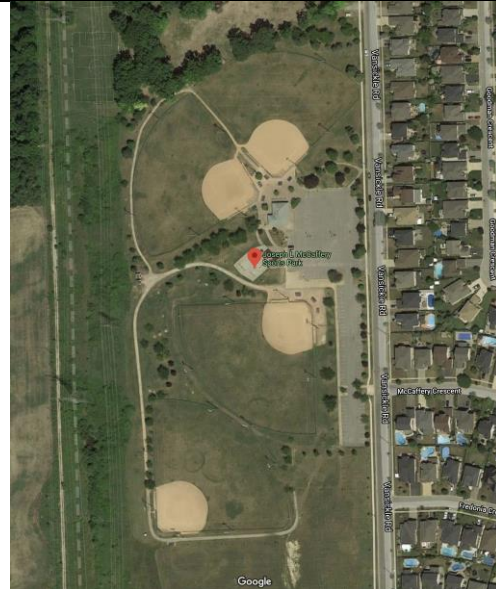
St.Catharines ON L2S 3W4

Hospital Location

**Niagara Health Services
St. Catharines Site Hospital**

**1200 Fourth Avenue
St. Catharines, ON
L2S 0A9
Tel: (905) 378-4647**

*Approx. 4.1 km
Approx. 7 mins
Directions on Page 2 (over)*



Charge & Call Person Details

| | | | |
|--|-------|--------------------------------------|-------|
| Team Name | _____ | Division | _____ |
| Charge Person (1 st Option) | _____ | Call Person (1 st Option) | _____ |
| Charge Person (2 nd Option) | _____ | Call Person (2 nd Option) | _____ |

Roles and Responsibilities

CHARGE PERSON:

- Clear the risk of further harm to the injured person by securing the area and shelter the injured person from the elements.
- Designate who is in charge of the other participants.
- Protect yourself (wear gloves if she/he is in contact with any body fluids such as blood).
- Assess ABCs (check that airway is clear, breathing and pulse are present, nor major bleeding, etc.).
- Wait by the injured person until EMS arrives and the injured person is transported.
- Fill out and submit the Injury Report Form (website).

CALL PERSON:

- Call 9-1-1 for Emergency help.
- Provide all necessary information to dispatch (eg. Facility location, Diamond #, nature of injury, what if any first aid has been done).
- **Diamond 3 – to the left of the entrance – closest to Vansickle Rd**
- Clear any traffic from the entrance/access road before EMS arrives.
- Wait by the entrance to the facility to direct the ambulance when it arrives.
- Call the emergency contact person listed on the injured medical profile or contact list.



EMERGENCY ACTION PLAN

Joe McCaffery Sports Park #3

61 Vansickle Rd., St. Catharines ON L2S 3W4



Directions to NHS – St.Catharines Site Hospital – 4.1 kms (approx. 7mins)

Joe McCaffery Sports Park

61 Vansickle Rd., St. Catharines, ON L2S 3W4

1. Left out of the parking lot onto Vansickle Ave.
2. Left onto St. Paul St. W.
3. Right onto First St. Louth – Hospital on Left

St. Catharines Hospital

1200 Fourth Ave, St. Catharines, ON

