



EMERGENCY ACTION PLAN

Pic Leeson Park

77 Dundonald St. St.Catharines ON L2P 3T6



Emergency Phone: 9-1-1

Facility Address

Pic Leeson Park

77 Dundonald St.

St.Catharines ON L2P 3T6

Hospital Location

**Niagara Health Services
St. Catharines Site Hospital**

1200 Fourth Avenue

St. Catharines, ON

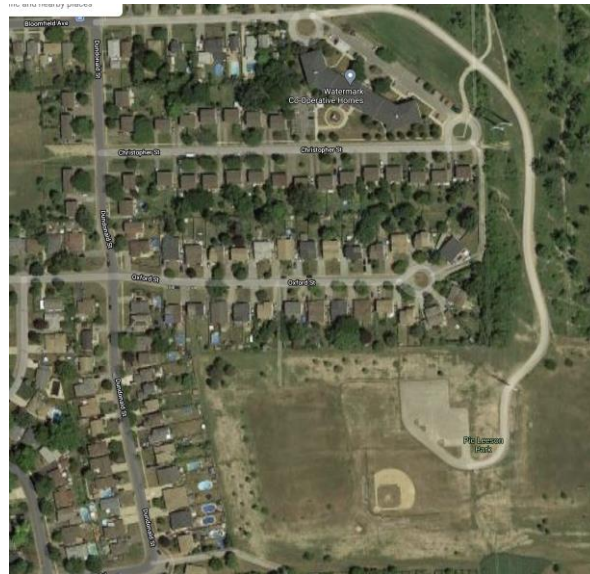
L2S 0A9

Tel: (905) 378-4647

Approx. 8.7 km

Approx. 14 mins

Directions on Page 2 (over)



Charge & Call Person Details

Team Name

Charge Person (1st Option)

Charge Person (2nd Option)

Division

Call Person (1st Option)

Call Person (2nd Option)

Roles and Responsibilities

CHARGE PERSON:

- Clear the risk of further harm to the injured person by securing the area and shelter the injured person from the elements.
- Designate who is in charge of the other participants.
- Protect yourself (wear gloves if she/he is in contact with any body fluids such as blood).
- Assess ABCs (check that airway is clear, breathing and pulse are present, nor major bleeding, etc.).
- Wait by the injured person until EMS arrives and the injured person is transported.
- Fill out and submit the Injury Report Form (website).

CALL PERSON:

- Call 9-1-1 for Emergency help.
- Provide all necessary information to dispatch (eg. Facility location, Diamond #, nature of injury, what if any first aid has been done).
- Clear any traffic from the entrance/access road before EMS arrives.
- Wait by the entrance to the facility to direct the ambulance when it arrives.
- Call the emergency contact person listed on the injured medical profile or contact list.



EMERGENCY ACTION PLAN

Pic Leeson Park

77 Dundonald St., St.Catharines ON L2P 3T6



Directions to NHS – St.Catharines Site Hospital – 8.7 kms (approx. 14 mins)

Pic Leeson Park

77 Dundonald St, St. Catharines, ON L2P 3T6

Directions are from parking lot in outfield.

1. Follow Bloomfield Ave. Out of parking lot
2. Turn right onto Dundonald St. - slight left, continue on Rosedale Ave
3. Turn right onto Bunting Ave.
4. Turn left (east) on Queenston St/Niagara Regional Rd 81
5. Turn left onto Westchester Crescent/Regional Rd 91
6. Turn right onto Geneva St/Regional Rd 46(signs for Ontario 406 N)
7. Turn right to merge onto ON-406 N
8. Use the right 2 lanes to take the Regional Road 77 W/Fourth Avenue exit
9. Merge onto Fourth Ave/Regional Rd 77
 - **Continue to follow Regional Rd 77**

St. Catharines Hospital

1200 Fourth Ave, St. Catharines, ON

