



## St.Marys Ringette Association Policy

Policy Title: <b>ST MARYS RINGETTE COACH AND TEAM SELECTION PROCESS</b>
Date revised: March 30 2020
Date reviewed:

### Purpose:

The intent of this policy is to ensure that the St Marys Ringette Association (SMRA) continues to provide:

- A positive playing experience for all players that is fun and enjoyable.
- Well-defined criteria that all coaches, players, and parents can follow, understand and support
- The basic information to facilitate an open and fair process in the selection of teams
- Opportunities for qualified players to play at the A/AA level
- Opportunities for interested players to play at the regional level
- Assure the future growth of Ringette is taken into consideration

The goal is to provide all players the opportunity to play at a calibre level conducive to their needs, wishes and abilities, while taking into consideration the specific constraints of Ringette rules and regulations, and the availability of other teams of the same calibre within the region of play.

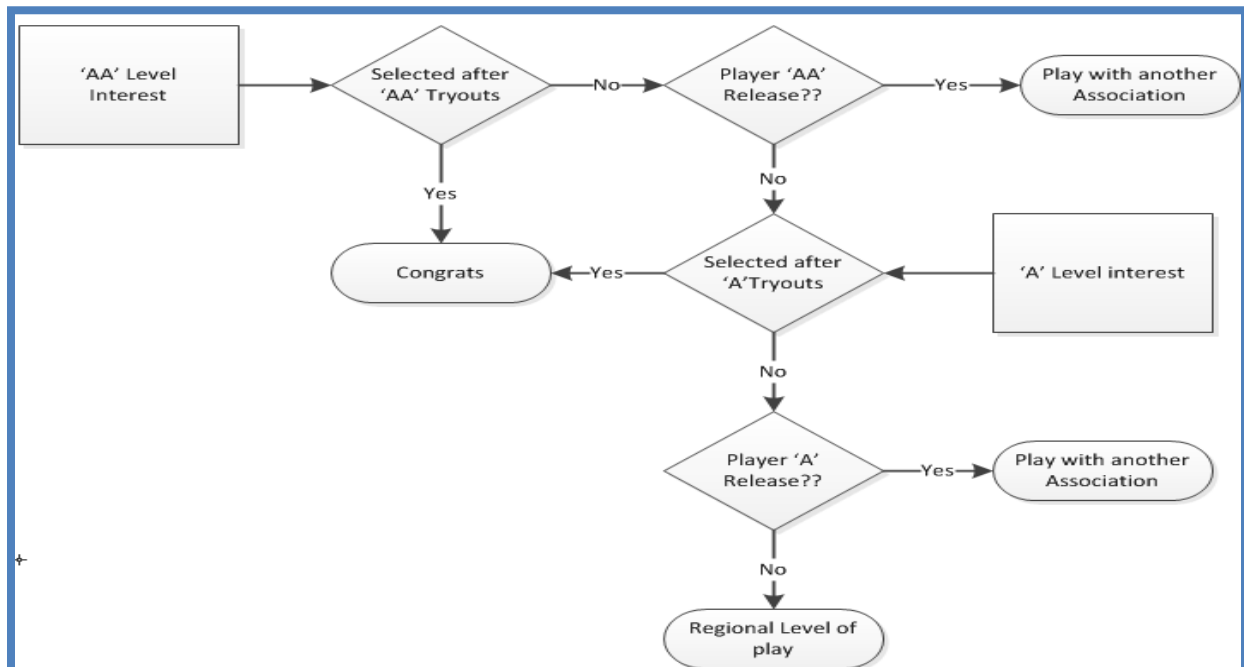
SMRA regional teams play ringette within the Western Region Ringette League (WRRL) at the B/C level. Teams in the "A" and "AA" levels are considered Provincial and play in the Western Ontario Ringette League (WORL)/Great Lakes Ringette League (GLRL). Provincial teams generally travel further for league games and the level of play is more competitive.

This document sets out how players will be selected for both regional and provincial teams as well as the selection of coaches for these teams.

Application:

## TEAM SELECTION

### Provincial

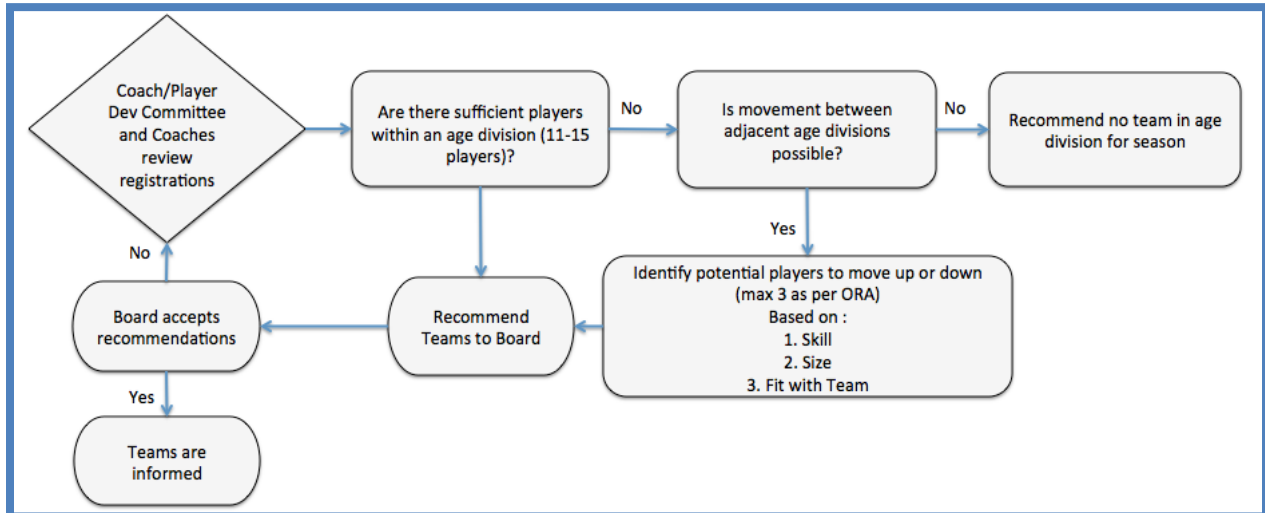


The St Marys Ringette Association will adhere to the following Team Selection Process:

- If the number of 'home' or 'current' association players that have submitted intents to play at the Provincial level meet the WORL 'Declaration and Tryout Process' requirements, the St Marys Ringette Association Board (Board) will determine if it will submit a willing to host form for approval.
- Decision to host a provincial level team will take into consideration the viability of a regional team at that age level of play.
- On approval to host a Provincial level team, the Board will ask the Chair of the Coach/Player Development Committee (Committee) to setup tryouts as outlined in the 'Declaration and Tryout Process' defined by WORL/GLRL
- The Committee, with the Coaches at the division of play being offered, will complete evaluations of the players attending tryouts
- SMRA will follow WORL/GLRL quotas for local vs. non-SMRA players on A/AA teams.
- The first two tryouts will be open to all players, any additional tryouts will be by invitation only
- A fee will be required by all players attending a tryout – this is to cover ice cost.
- Players accepted to a team will be handed an 'offer to play' letter as per the WORL/GLRL 'Declaration and Tryout Process'

- Players not accepted will be handed a 'declined offer to play' letter as per the WORL/GLRL 'Declaration and Tryout Process'

### **Regional (Every Player has a place to play)**



The St Marys Ringette Association will adhere to the following Team Selection Process:

- Regional Team selection is firstly decided based on age and the SMRA supports all girls playing in the appropriate age group
- If there are not enough players to form a team, the Committee will, in discussion with Coaches, identify potential players to play up, or play down (to a maximum number per ORA rules) based on player skill, player size, and fit with other players on the team.
- The Committee will make recommendations to the Board on the formation of teams. If the Board rejects (via voting) any recommendations, the Committee and Coaches will re-examine the options and submit a revised proposal for the team(s) rejected.

In each division, where there are sufficient registrants to have more than one team, the Committee, with nonbiased/non parent evaluators will use the skill matrix set out by the ORA to determine teams. Teams are to be balanced.

Player evaluations by the Committee and coaches will be based on:

- individual skills – skating, passing and shooting
- team skills – understanding of the game and positional play in a game situation,
- coach-ability – attitude, attentiveness, effort, respect, attendance, and punctuality.

The Committee members or Coaches will not evaluate their own children. After the final evaluations, the Committee and Coaches will submit the recommended list of players to the Board. Once approved, Head Coaches will notify players of their placement either by a personal phone call (the coach must speak with the player or parent, it is not

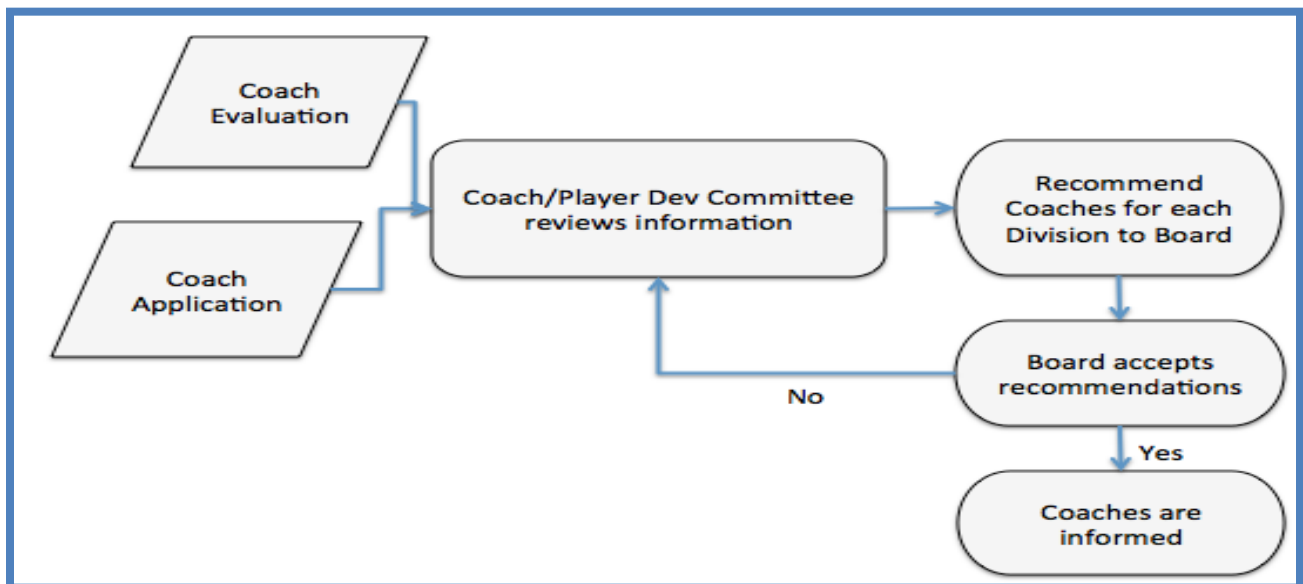
appropriate to simply leave a message) or in a face-to-face discussion. Players or parents can request a verbal evaluation of their performance, including a summary of their strengths and weaknesses, as part of the overall process.

A player's request to play on the same team as a friend or relative will be considered by the Committee and may be approved by the Board, provided:

- in the case of a stronger and weaker team, both players consent to play on the team suited to the weakest player, or
- as in the case of equally balanced teams, that the request does not hinder the balancing of the teams.

The Board cannot by-pass the Committee – all recommendations on team selection and composition must come from the Committee. Similarly, the Committee cannot by-pass the Board. The Board must approve all recommendations on team selection and composition.

## **COACH SELECTION**



The SMRA relies entirely on volunteers to coach Ringette. Coaches apply to the SMRA using the SMRA Coaching Application Form, indicating a preferred division and level at which they would like to coach. In some cases the Committee will also solicit volunteers to apply. The Committee reviews all applications as well as feedback received from Coach Evaluations. The Committee will recommend to the Board, prior to the start of each season, the coaches for each division. Recommendations will also take into account coaching qualifications and experience.

Ringette coaches are required to attend clinics, and obtain coaching certification through the National Coaching Certification Program (NCCP). The SMRA is committed

to supporting individuals who wish to participate in this certification process. Coaching clinics are held throughout the year, and usually entail at least a weekend commitment.

The SMRA's objective is to ensure that each team has qualified coaching staff that may include a combination of experienced, certified coaches and individuals new to coaching who are willing to pursue certification through the NCCP. Each team must have at least one certified female bench staff (coach, assistant coach, manager and/or trainer).

For "A" level teams, the Committee will review the applicants and make a recommendation to the Board on the Head coach based on his/her coaching qualifications and experience.

If the coaching applicant has a child trying-out for the team, then a decision about who will coach the team will be delayed until after the players have been evaluated.

It is preferable that the Head coach is selected prior to the commencement of try-outs and can support the Committee in the player selection process. After the team has been selected, the Head coach and Committee will choose the remaining bench staff based on the qualifications and willingness of the individuals available.