



SCMF Game Day – Emergency Action Plan

Basic information:

Facility Name:	<i>Atom:</i> Perry Field (South) <i>Bantam/Pee Wee:</i> Highland Field (North)	Address:	Highland Drive (south) Cooper Drive (west) Colonel Otter Drive (north)
Facility Phone Number:	Game Day Physician/EMT phone number will be distributed to head coaches prior to game	Directions:	State to emergency personnel if the emergency is located on Perry Field (South) or Highland Field (North)

Emergency Telephone Numbers:

EMERGENCY: 911

Non-emergency Numbers:

Ambulance: (306) 773-2666
 Fire Department: (306) 778-2760
 RCMP: (306) 778-4870

Emergency Supplies - in Football Clubhouse

- **AED Defibrillator**
- **First Aid Kit**

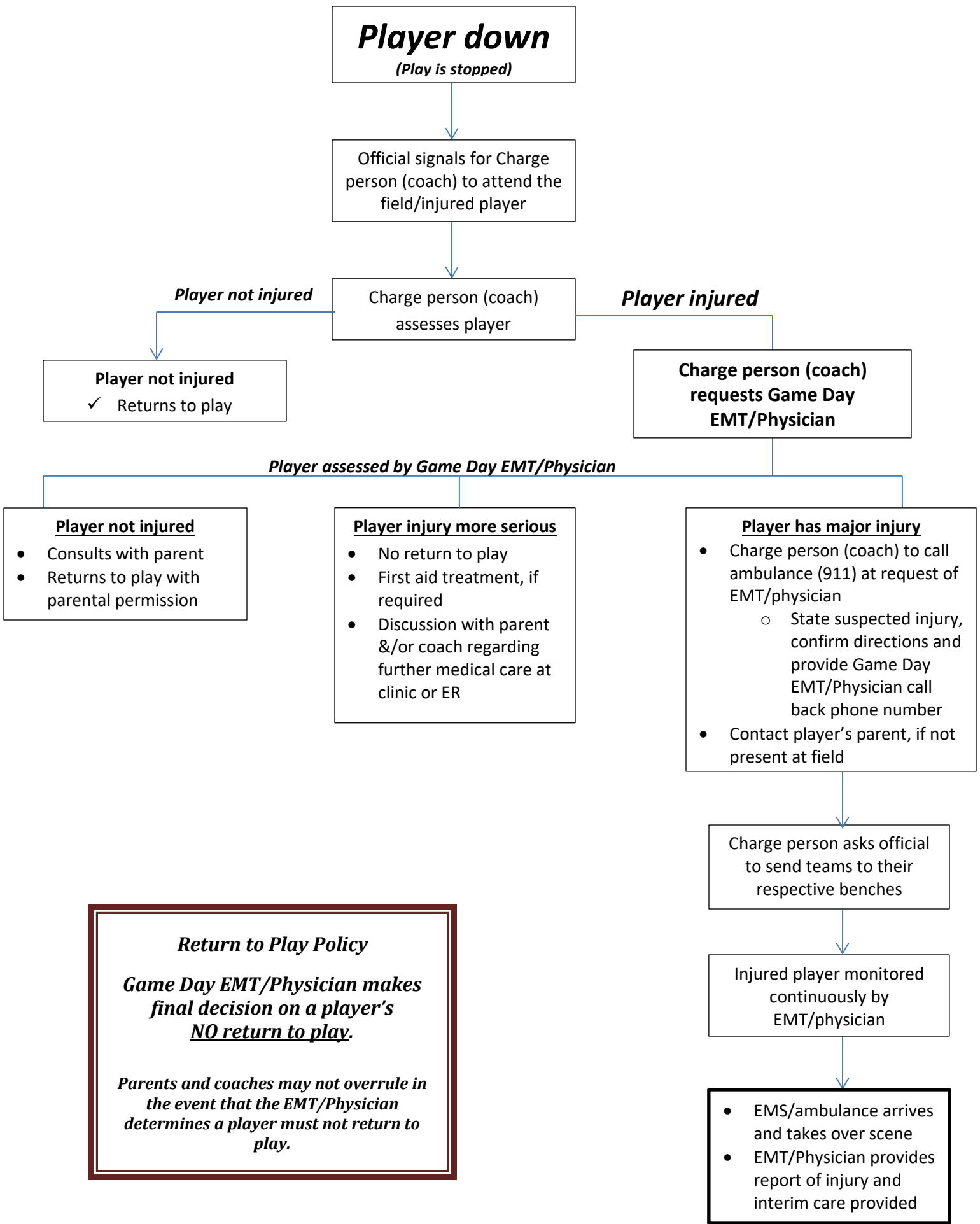
Emergency Action Plan Roles :

1) Charge Person (First Responder – Coach)

- Assess injury status of player
- Advise **Call Person** if Game Day EMT/Physician required

2) Call Person (Game Day EMT/Physician)

- Head coaches will be notified of Game Day EMT/Physician & contact information on morning of Game Day by text. Head coaches are responsible to ensure this information is forwarded if they are unavailable on Game Day.
- Call person may request that parent/spectator/coach call 911:
 - Ask for ambulance. Give the operator a brief description of the injury (suspected spinal, suspected broken leg, etc). Give name and address of facility. Provide the location using directions noted above.
- If 911 asks for a callback number, give the Game Day EMT/Physician’s phone number



Return to Play Policy

Game Day EMT/Physician makes final decision on a player's NO return to play.

Parents and coaches may not overrule in the event that the EMT/Physician determines a player must not return to play.