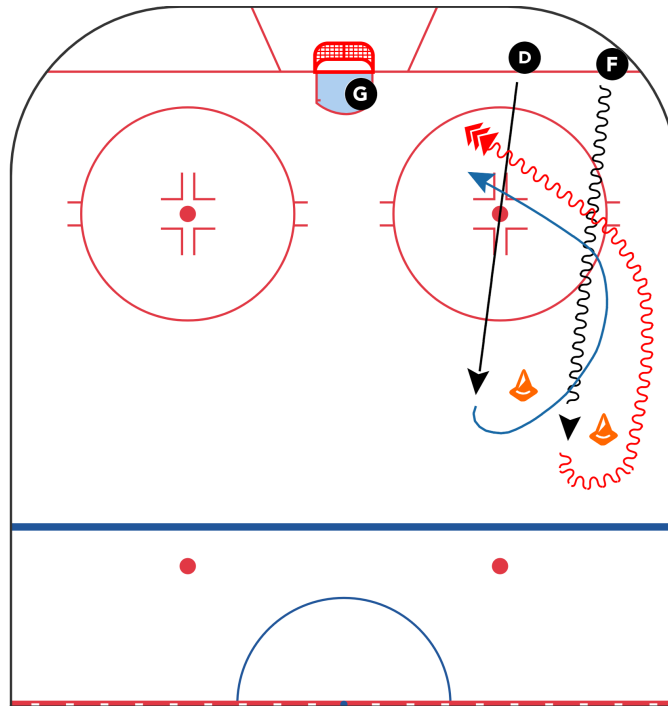




Angling



Description

- **F** Skates with puck up the the far (inside pylon)
- **D** Skates up to the close (outside pylon)
- **F** Turns towards wall and skates with the puck to the net
- **D** Times going around the pylon to check/cut off/angle **F** from making it to the net
- If the **F** beats the **D** they drive to the net and take a shot

Key Points

- Forward needs to be going hard the whole drill
- Defense needs to time the drill to cut the forward off at the right moment
- Forward to dip shoulder and drive to the net
- Defense to angle the Forward to the boards and check the players hands/pin forward