

TABLE OF CONTENTS

OWHA Representatives	1
OWHA Annual Report 2011-2012.....	2
OWHA Provincial Champions 2011-2012.....	4
OWHA Sanctioned Tournaments	5
OWHA Provincial Championships Stats.....	6
New OWHA Members.....	6
OWHA Registration Report	7
OWHA Teams & Players Registration Statistics.....	8
OWHA Certification Clinics	9
OWHA Development Programmes	10
Friends of the OWHA.....	11
Penalty Free Sweepstakes/Quest for Gold.....	12
PWHL / CIS	13
Ontario Winter Games	14
International Tour – Nepean Wildcats Midget AA.....	17
National Female Esso Cup Midget Championships – Thunder Bay Queens	18
National U-18 Women’s Championships.....	19
2012 U-18 World Championship – Canada Gold	20
CWHL – Clarkson Cup.....	21
2012 Women’s World Championships – Canada Gold	22
2012 MECO Cup U-22 Championship – Canada Bronze.....	23
World Girls’ Hockey Day 2011.....	24
OWHA Discipline Reports	25
OWHA Suspensions By Division.....	27
OWHA Discipline Charts	29
Injury Reports.....	30
In Loving Memory	31

Ontario Women’s Hockey Association #3-5155 Spectrum Way, Mississauga, Ontario L4W 5A1 Tel: (905) 282-9980 Fax: (905) 282-9982 www.owha.on.ca info@owha.on.ca
--





2011-2012 OWHA EXECUTIVE COMMITTEE

Suzanne Essex	Chairperson
Fran Rider	President
Bryan Chappell	Past Chairperson
Pat Nicholls	1 st Vice-Chairperson
Bill Williamson	2 nd Vice-Chairperson
Ted Dean	3 rd Vice-Chairperson
Mary Ann Blunt	Secretary
Debbie Macdonald	Treasurer
Grahame Rumsby	Regional Director – Central
Teresa Muto	Regional Director – Central East
Betty Solomon	Regional Director – Central West
Karen Parker	Regional Director – Eastern
Leslei Scott	Regional Director – Northern
Denise Marjerrison	Regional Director – Toronto
Joanne Innes	Regional Director – Western
Karen Phibbs	OHA Delegate

Board of Regents

Mayor Hazel McCallion	Professor Ed Ratushny
Kay Cartwright	Celia Southward
Frank Champion-Demers *	Fran Rider
Carl Noble	Doug Nicholls

www.owha.on.ca

Thanks to

Clinic Coordinator	Diane Boles
Head Scout	Brian Hart
Referee-in-Chief	Laurie Taylor-Bolton
Web Master	Betty Ann Armstrong



JOIN US IN THE CELEBRATION OF WOMEN'S HOCKEY

ONTARIO WOMEN'S HOCKEY ASSOCIATION ANNUAL REPORT 2011-2012

PERSPECTIVE in HOCKEY and in LIFE

***We join sport to enrich our lives.
Let's ensure our actions provide enrichment to the lives of others.
We are teammates in the growth and development of female hockey!***

The 2011 – 2012 hockey season has been an overwhelming success for the Ontario Women's Hockey Association. Tens of thousands of players, coaches, trainers, managers, administrators, officials, supporters and fans came together to share a game that requires teamwork and cooperation at all levels. Female hockey in Ontario is thriving with its success having a positive impact on opportunities throughout Canada and the world. Sincere thank you to everyone who contributed to the competition and participation over the past season!

Our primary objective is for every player to enjoy a positive hockey and life experience. We share the responsibility of providing a welcoming and respectful environment for all those in female hockey.

The leadership must continue to come from the adult administrators who oversee the game. We do recognize the pressures from a society that sometimes does not grasp the responsibility of both giving and receiving in a team atmosphere. It is difficult at times, but we must support each other, focus on the positives and work together to address opportunities to make the game stronger and more enjoyable. Each season is a journey to be cherished as the personal memories are far greater than the score of a single game.

There have been many wonderful initiatives within the OWHa this season. The first IIHF World Girls Hockey Day came about with very short lead time. OWHa members jumped to the ice and ran outstanding programmes. As an example, Brampton Canadettes focused on promoting hockey in new areas and recruited 10 girls from a local mosque.

With success come challenges that we need to approach "head" on. Concussion education is a very important component of OWHa programming. Dr. Charles Tater and Dr. Michael Czernota are two of many experts who recently attended OWHa meetings and are truly committed to hockey safety. Dr. Tater's web site, www.thinkfirst.ca is a valuable source of information. We commend associations such as Waterloo Ravens who hosted an excellent concussion awareness seminar for their members.

An area of focus for the OWHa continues to be fair play. We have work to do to reduce the number of suspensions incurred this season. Head contact, checking from behind, fighting, deliberate attempt to injure and verbal abuse have no place in female hockey and will not be tolerated. It is the responsibility of coaches to teach respect and the importance of playing by the rules. Coaches have a tremendous impact on the players and must set a positive example. Why are novice and atom coaches receiving suspensions for verbal abuse? Officials at this level are often young people doing their best as they learn to officiate. Even highly trained NHL officials make mistakes and questionable calls. If a coach does not exemplify positive values, they should not be coaching.

The Ontario Women's Hockey Association partnered with Senators Sports and Entertainment to bid for the 2013 IIHF Women's World Ice Hockey Championship. The bidding process was extensive but resulted in success as we were awarded the hosting of the event by Hockey Canada. A component of our bid included holding the 2013 OWHa Provincial Championships in Ottawa during the World Championship. The event will truly be a Celebration of Women's Hockey with thousands of female hockey enthusiasts sharing the excitement!

All OWSHA members should feel proud to take ownership of this event as it belongs to all of us. We need to work together to make it a truly memorable experience as we welcome the world to Ontario and share the excitement of female hockey at all levels.

We congratulate Team Canada on capturing gold at the 2012 IIHF Women's World Ice Hockey Championship in Burlington, Vermont. They rebounded from a tough opening loss to Team USA but rebounded with an overtime gold medal win!

What is this level of sport about? It is the best in the world, the most intense competition with winning at the forefront. It is about arch rivals Canada and the USA. It is also about growing the game for future generations throughout the world as female hockey players exemplify the values of excellence and fair play.

This World Championship also captured media attention for a very special example from Team USA of what true sport is also about. An injury to Team Canada forward Hailey Irwin led to this headline in the Canadian Press; "Irwin injury interrupts U.S. – Canada rivalry".

Irwin suffered a serious ankle injury when she slid heavily into the end boards. As play continued, she struggled to one leg and, in obvious pain tried desperately to get to her bench. USA goalie, Molly Shaus did her best to assist, giving Irwin a well appreciated push that took her to the blue line.

As Irwin continued struggling on one leg, the whistle finally went and she collapsed in front of the USA bench. American forward Monique Lamoureux-Kolls jumped off the bench and helped Irwin to her feet. In spite of the intense rivalry between the two top world powers, the players are exceptional role models who display the true values of sport.

The Ontario Women's Hockey Association is an exceptional organization thanks to countless players, administrators and supporters who have contributed to the opportunities we now enjoy. From Isobel Gathorne Hardy who played in the first recorded women's hockey game in Ottawa in 1898 through the players on the Preston Rivulettes and Stratford Aces in the 1930's to Hazel Journeaux (McCallion) with Montreal Kik in 1940. Those and many others led to the formation of the OWSHA in 1975. From there, the OWSHA established the senior national championships, the world championships and led the lobby for inclusion as an Olympic Sport. Through all of this, the primary focus remained the individual player and her opportunity to play at a level suiting her ability and interest.

We have a wonderful opportunity this year to celebrate our uniqueness and to promote the strengths of female hockey. We rely on each other to spread the positive messages to our communities, the province and the world!

Please take time to enjoy the journey through the 2012-2013 season. There will be ups and downs in hockey and in life over the next twelve months. It is within the power of each of us to embrace the positives in even the toughest situations and to share the enrichment of life through hockey.

Sincere thank you for your contributions to female hockey. Have a great year!



2011-2012 OWSA PROVINCIAL CHAMPIONS

Five hundred and forty-five teams participated in the 2011-12 Provincial Championships. All divisions were held April 13-15th in Brampton, Mississauga, Oakville, Toronto and Vaughan. A total of 545 teams participated in the April Provincial event.

Division	Category	Gold	Silver	Bronze
Novice	A	Burlington Barracudas	Aurora Panthers	Clarington Flames
Novice	B	Ancaster Avalanche	Sudbury Lady Wolves	Cambridge Roadrunners
Novice	C	Sault Ste Marie Wildcats	Lucan Irish	St. Mary's Rock
Atom	AA	Stoney Creek Sabres	Waterloo Ravens	London Devilettes
Atom	A	Oakville Hornets	Cambridge Roadrunners	Scarborough Sharks
Atom	BB	Ancaster Avalanche	Niagara Rapids	Lucan Irish
Atom	B	Wilmot Wolverines	Carleton Place Cyclones	Ottawa Valley Thunder
Atom	C	Sarnia Lady Sting	Nepean Wildcats	Gloucester-Cumberland Stars
Pee Wee	AA	Etobicoke Dolphins	Kitchener Lady Rangers	London Devilettes
Pee Wee	A	Whitby Wolves #4853	Ottawa Ice	Sarnia Lady Sting
Pee Wee	BB	North Durham Blades	St. Mary's Rock	Oakville Hornets
Pee Wee	B	Ayr Rockets	Brampton Canadettes	Sudbury Lady Wolves
Pee Wee	C	Nepean Wildcats	Kanata Rangers	Kitchener Lady Rangers
Bantam	AA	Whitby Wolves	Etobicoke Dolphins	Oakville Hornets
Bantam	A	Brantford ice Cats	Etobicoke Dolphins #416	Etobicoke Dolphins #436
Bantam	BB	Timmins PDS Falcons	Whitby Wolves	Nepean Wildcats
Bantam	B	Walkerton Capitals	South Huron Sabres	Markdale Shooting Stars
Bantam	C	East Lambton Eagles	Woolwich Wild	Mount Brydges Cougars
Midget	AA	Thunder Bay Queens	Waterloo Ravens	Toronto Leaside Wildcats
Midget	A	Orangeville Tigers	Niagara Rapids	Toronto Leaside Wildcats #3791
Midget	BB	Waterloo Ravens	North Bay Ice Boltz	Cornwall Typhoons
Midget	B	Kitchener Lady Rangers	Milverton Royals	Walkerton Capitals
Midget	C	Kanata Rangers	Ilderton Jets	North Bay Ice Boltz
Intermediate	AA	Bluewater Hawks	Toronto Aeros	Mississauga Chiefs
Intermediate	A	Hamilton Hawks	Whitby Wolves	Windsor Wildcats
Intermediate	B	Parkhill	Cambridge Roadrunners	Lucknow
Senior	AA	Toronto Sirens	Ottawa Ice Cats	London Devilettes
Senior	A	Stoney Creek Sabres	Scarborough Sharks	Hamilton Ice Hawks
Senior	BB	Lakeshore Lady Lakers	Cobourg Eagle.ca	Oshawa Lady Generals
Senior	B	Belmont Blazers #5130	London Devilettes Blues	Monkton Lady Wildcats
Senior	C	Embro 97s	Campbellford Colts	Ilderton Jets

**CONGRATULATIONS
to
ALL PARTICIPANTS**



TOURNAMENTS

A total of 182 tournaments (93 Competitive & 89 House League) were sanctioned by the Ontario Women's Hockey Association for the 2011-2012 hockey season.

OWHA Sanctioned COMPETITIVE Tournaments – Locations

AYTON	HONEYWOOD	PEMBROKE
BARRIE	HUNTSVILLE	PETERBOROUGH
BELLEVILLE	KANATA	SARNIA
BELMONT AYLMER	KITCHENER	SAUGEEN SHORES
DORCHESTER	LONDON (Devilettes)	SAULT STE MARIE
BLIND RIVER	LONDON (Ladies)	SCARBOROUGH
BRAMPTON (Canadettes)	MARKHAM-	SMITHS FALLS
BRAMPTON (Cougars)	STOUFFVILLE	ST. CATHARINES
BRANTFORD	MILVERTON	ST. MARY'S
BROCKVILLE	MISSISSAUGA	ST. THOMAS
BURLINGTON	MITCHELL	STONEY CREEK
CAMBRIDGE	MOUNT FOREST	STRATFORD
CENTRAL YORK	NAPANEE	SUDBURY
CHATHAM	NEPEAN	TEMISKAMING SHORES
CLARENCE ROCKLAND	NIAGARA FALLS	THUNDER BAY
CLARINGTON	NIAGARA FALLS (Ladies)	TORONTO AEROS
CLEARVIEW	NORFOLK	TORONTO-LEASIDE
COLD CREEK	NORTH BAY	WATERLOO
CORNWALL	NORTH SIMCOE	WEST
DURHAM WEST	NORTH YORK	NORTHUMBERLAND
ETOBICOKE	OAKVILLE	WHITBY
GLENGARRY	ORANGEVILLE	WILLOWDALE
GLOUCESTER-	ORILLIA	WINDSOR (Hocktoberfest)
CUMBERLAND	OSHAWA	WINDSOR (Ladies)
GODERICH	OTTAWA	WINDSOR (Sun Parlour)
GREATER KINGSTON	OTTAWA (BELL CAPITAL)	WOODSTOCK
GUELPH		
HAMILTON (GHA)		

Special thanks to the many volunteers who have worked long hours to provide tournament competition for the teams and special memories for everyone involved. Your efforts contributed to make 2011-12 an exciting hockey season.

*To the players, coaches, trainers, officials, parents & fans,
we hope these tournaments have brought you new friendships
and many positive memories.*



OWHA Sanctioned HOUSE LEAGUE Tournaments

Locations

ARNPRIOR
BARRIE
BELMONT AYLMER DORCHESTER
BELLEVILLE
BRAMPTON CANADETTES
BRAMPTON COUGARS
BROCKVILLE
BURLINGTON
CAMBRIDGE
CARLETON PLACE
CENTRAL YORK
CHATHAM
CLARENCE ROCKLAND
CLARINGTON
CLEARVIEW
CORNWALL
DRYDEN
DUNNVILLE
DURHAM WEST
EMO
FORT FRANCES
GANANOQUE
GLENGARRY
GLOUCESTER-CUMBERLAND
GODERICH
GREATER KINGSTON
HALDIMAND
HAMILTON GHA
HAMILTON WHL
HUNTSVILLE
KANATA
LAKE OF THE WOODS
LONDON
LONDON LADIES
MOUNT FOREST
NEPEAN
NIPIGON
NORFOLK
NORTH BAY & DISTRICT
NORTH HALTON
NORTH SIMCOE
OAKVILLE
ORANGEVILLE
ORILLIA
OSHAWA
OTTAWA
PARKHILL
PETERBOROUGH
PORT ARTHUR
RED LAKE
RUSSELL & DISTRICT
SAULT STE MARIE
SCARBOROUGH
SMITHS FALLS
SOUTHPOINT (Leamington)
ST. CATHARINES
ST. THOMAS
STONEY CREEK
STRATFORD
SUDBURY
TEMISKAMING SHORES
THUNDER BAY
TORONTO-LEASIDE
WEST LORNE
WEST NORTHUMBERLAND
WHITBY
WILMOT
WINDSOR (Ladies)
WINDSOR (Sun Parlour)
WOODSTOCK
WOOLWICH



2011-12 OWHA PROVINCIAL CHAMPIONSHIPS STATS

Of Participating Teams by Division/Category

NOVICE 8 & under		ATOM 10 & under		PEEWEE 12 & under		BANTAM 14 & under		MIDGET 17 & under		INTERMEDIATE 21 & Under		SENIOR Open age	
A	9	AA	18	AA	22	AA	24	AA	24	AA	18	AA	12
B	24	A	18	A	16	A	24	A	24	A	12	A	22
C	4	BB	16	BB	16	BB	24	BB	16	B	8	BB	14
		B	24	B	23	B	24	B	24			B	20
		C	16	C	14	C	8	C	16			C	11
	37		92		91		104		104		38		879

OWHA Provincials – April 13th-15th

Teams = 545
Participants = 11642
Event Volunteers = 150+
Arena Facilities = 14
Rinks = 50
Games = 1103
Game Officials = 240
Officiating Assignments = over 2600
Enthusiastic Parents & Fans = 30,000+

NEW OWHA MEMBERS

The OWHA proudly welcomed the following new Independent Teams &/or Associations this past season:

APPROVED NEW TEAMS, ASSOCIATIONS and LEAGUES SINCE 2011 AGM

Centre/School	New Female Hockey Programme	Centre/School	New Female Hockey Programme
Caledon Coyotes	⇒ Full Association Status	Norfolk Herricanes	⇒ Full Association Status
Port Colborne Minor Hockey	⇒ House League Status	London Stealth	⇒ Senior AA
West Huron Wave	⇒ Junior Association	Sturgeon Lake	⇒ Junior Association
Sioux Snipers	⇒ Senior House League Status	Ilderton Jets	⇒ Senior B
Lakeshore Lady Lakers	⇒ Senior BB	Kitchener Lady Rangers	⇒ Full Association Status
Scanlon Creek Hockey International	⇒ Intermediate AA	Laurentian Lady Vees	⇒ Senior A
Warsaw Wild	⇒ Senior House League	Confederation College	⇒ Senior
8WG Women's Flyers	⇒ Senior House League	Bancroft Jets	⇒ Full Association Status

Team = Single Independent Team

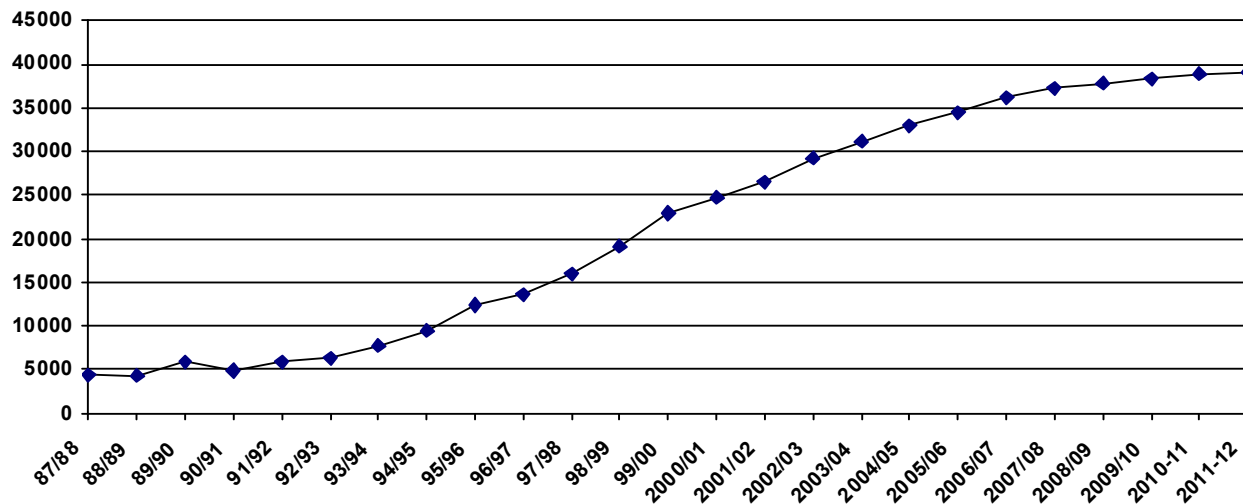
Full Association = FUNdamentals, Novice, Atom, Peewee, Bantam, Midget, Intermediate, Senior, Sr Recreational, Masters

Junior Association = FUNdamentals, Novice, Atom, Peewee, Bantam, Midget, Intermediate

OWHA REGISTRATION REPORT

Congratulations again to all members of the Ontario Women's Hockey Association on another season of growth. Membership in the OWHA increased by **6 teams** and **184 players** in the 2011-2012 season.

OWHA GROWTH CHART (Players/Year)



OWHA REGISTRATION – PLAYERS / DIVISION 1999 → 2012

TEAMS	99/00	00/01	01/02	*02/03	03/04	04/05	05/06	06/07	07/08	08/09	09/10	10/11	11/12	+/-
Competitive	590	643	686	737	767	834	901	951	980	1,022	1,034	1,048	1,043	-5
Non-Competitive	966	1,031	1,116	1,230	1,293	1,356	1,401	1,448	1,494	1,508	1,508	1,515	1,527	+12
Sledge Hockey	-	-	-	-	-	-	-	-	1	1	1	1	-	-1
Total Teams	1,556	1,674	1,802	1,967	2,060	2,190	2,302	2,399	2,475	2,531	2,543	2,564	2,570	+6

PLAYERS	99/00	00/01	99/00	00/01	01/02	*02/03	03/04	04/05	05/06	06/07	07/08	08/09	09/10	10/11	11/12	+/-
Masters	-	-	-	-	-	-	-	-	-	52	62	85	92	81	75	-6
Senior	5506	5229	5506	5229	5336	5140	5676	5633	6126	5918	6032	6088	6088	6092	6349	+257
Intermediate	1885	2334	1,885	2334	2625	2443	2182	2398	2505	2344	2604	2660	2706	2706	2819	+113
Midget	2061	2153	2061	2153	2164	3950	4404	4746	5578	6079	6229	6241	6530	6613	6533	-80
Bantam	2861	3028	2861	3028	3283	5080	5742	6304	6371	6711	6787	6814	6747	7048	6920	-128
Peewee	3771	4461	3771	4461	5057	5814	6191	6457	6374	6466	6599	6730	6877	6794	6392	-402
Atom	3461	3929	3461	3929	4274	4206	4396	4480	4486	5162	5160	5056	4804	5040	5240	+200
Novice /Tyke	-	-	-	-	-	-	-	-	-	-	-	-	-	-	-	-
Novice	2796	3122	2796	3122	3319	2216	2154	2550	2659	2988	3276	3499	3688	3613	3775	+162
FUNDamentals Initiation Program	574	476	574	476	481	321	377	348	323	452	491	640	760	904	983	+79
Sledge Hockey	-	-	-	-	-	-	-	-	-	-	26	14	15	11	-	-11
Total Players	22915	24732	22915	24732	26539	29172	31122	32916	34422	36172	37266	37827	38307	38902	39086	184

* Age Change season

OWHA Teams and Players Registration Statistics 2011-2012

CATEGORY	PLAYERS									TEAMS								
COMPETITIVE	11/12	10/11	09/10	08/09	07/08	06/07	05/06	04/05		11/12	10/11	09/10	08/09	07/08	06/07	05/06	04/05	
Senior AAA	60	71	128	95	92	106	102	100		3	3	6	5	5	5	5	5	
Senior AA	215	266	295	240	253	204	186	255		12	15	17	14	14	12	11	17	
Senior A	582	585	585	622	549	602	589	525		34	35	36	37	33	34	35	31	
Senior BB	340	368	423	392	387	419	400	368		20	22	25	25	24	26	24	23	
Senior B	649	552	357	271	271	171	261	178		38	33	24	17	17	11	17	11	
Senior C	351	394	311	377	349	384	351	332		21	23	18	23	21	23	21	20	
Intermediate AA	362	384	402	382	364	370	354	363		20	21	22	22	20	21	20	21	
Intermediate A	340	361	346	375	300	246	238	296		19	21	20	22	17	16	15	18	
Intermediate BB				111	102	74	86	84					7	6	6	5	5	
Intermediate B	280	117	136	61	0	165	215	193		17	7	8	4	0	7	12	12	
Intermediate C		105	83	121	139	239	243	175			6	5	8	9	15	16	10	
Midget AA	910	897	812	786	817	771	717	608		53	52	48	46	48	45	43	37	
Midget A	820	804	764	665	668	492	526	525		49	48	45	40	41	31	32	32	
Midget BB	884	707	870	688	578	534	594	499		53	43	52	42	35	39	36	31	
Midget B	974	859	808	736	795	774	717	686		62	53	49	46	50	48	43	43	
Midget C	538	913	883	1125	1097	913	829	638		35	58	57	71	70	58	55	42	
Bantam AA	786	679	571	574	563	524	379	335		48	41	35	35	34	31	23	21	
Bantam A	625	685	550	594	485	403	447	474		38	42	33	36	30	27	30	30	
Bantam BB	703	617	638	599	673	474	529	515		44	38	39	38	41	34	31	32	
Bantam B	1184	811	833	759	572	709	739	794		76	53	54	49	37	42	49	52	
Bantam C	280	817	668	948	1075	1036	913	741		19	54	44	63	71	72	62	50	
Peewee AA	416	403	357	303	338	353	320	330		25	25	22	19	21	20	20	21	
Peewee A	548	553	545	503	491	347	356	396		34	34	34	31	30	28	22	25	
Peewee BB	554	590	512	485	452	435	443	387		35	36	32	30	28	23	26	25	
Peewee B	1075	684	768	741	655	633	562	702		71	45	50	48	42	44	37	45	
Peewee C	356	805	1023	938	856	955	1096	727		24	53	69	62	58	66	72	47	
Atom AA	289	221	208	165	139	180	163	139		18	14	13	10	9	12	10	9	
Atom A	280	275	277	265	298	251	253	283		18	17	18	17	19	14	16	18	
Atom BB	382	299	442	408	322	251	243	239		24	19	28	27	20	15	14	15	
Atom B	848	627	548	324	460	360	338	372		56	41	37	21	30	29	22	25	
Atom C	358	626	539	798	818	807	580	456		23	42	37	56	55	53	42	30	
Novice A	142	154	204	167	138	116	86	108		9	10	13	11	9	8	6	7	
Novice BB					---	59	62	59						---	5	4	4	
Novice B	604	270	245	186	190	135	108	87		41	18	16	13	13	8	7	6	
Novice C	62	400	409	427	358	287	243	189		4	26	28	27	23	23	18	13	
SUB TOTAL	16,797	16,899	16,540	16,231	15,644	14,779	14,268	13,191		1043	1048	1034	1022	980	951	901	834	
NON-COMPETITIVE	11/12	10/11	09/10	08/09	07/08	06/07	05/06	04/05		11/12	10/11	09/10	08/09	07/08	06/07	05/06	04/05	
Masters	75	81	92	85	62	52	--	--		5	6	7	7	4	4	--	--	
Senior Rec.	2379	2588	2740	2811	2263	2252	2275	2731		158	173	186	186	151	256	149	176	
Senior HL/University	1773	1268	1249	1280	1868	1780	2012	1111		106	76	76	81	118	8	135	69	
Intermediate HL	1837	1739	1739	1610	1699	1250	1369	1287		127	113	113	106	114	109	94	90	
Midget HL	2407	2433	2393	2241	2274	2595	2195	1790		162	165	161	158	157	143	151	122	
Bantam HL	3342	3439	3487	3340	3419	3565	3364	3445		227	242	246	236	239	243	234	241	
Peewee HL	3443	3759	3672	3760	3807	3743	3597	3915		245	262	263	267	267	253	255	274	
Atom HL	3083	2992	2790	3096	3123	3313	2909	2991		218	212	198	222	227	230	210	211	
Novice HL	2967	2789	2830	2719	2590	2391	2160	2107		213	205	207	202	184	172	151	150	
Hockey FUNDamentals (Initiation) Programs	983	904	760	640	491	452	323	348		66	61	51	43	33	30	22	23	
SUB TOTAL	22,289	21,992	21,752	21,582	21,596	21,393	20,204	19,725		1,527	1,515	1,508	1,508	1,494	1,448	1,401	1,356	
Sledge Hockey		11	15	14	26	--	--	--			1	1	1	1	--	--	--	
Grand Total	39,086	38,902	38,307	37,827	37,266	36,172	34,472	32,916		2,570	2,564	2,543	2,531	2,475	2,399	2,302	2,190	

OWHA Participant Registration 11-12

Players =	38,561		
Duplicate Players =	525		
DS Players =	1474		
Total Players =	40,035		
Staff =	11,453	Staff - Female =	5368
Duplicate Staff =	2,003	Staff - Male =	8088
Total Staff =	13,456	Total Staff =	13456
Officials =	1,602		
Duplicate Officials =	41		
Total Officials =	1,643		
Total Registration =	55,134		





OWHA CERTIFICATION CLINICS

The following list of certification clinics were scheduled & coordinated through the Ontario Women's Hockey Association in the 2011-2012 season. Our thanks to all local clinic hosts and program instructors for their assistance in delivering these valuable certification clinics. Thanks to Diane Boles, OWHA Clinic Coordinator for her efforts and dedication to the OWHA Development Program.

HOCKEY CANADA OFFICIATING PROGRAM	
Aug 20-21	OWHA NCOP Instructors & Supervisors

HOCKEY CANADA OFFICIATING PROGRAM (HCOP) CLINICS		
DATE	LOCATION	CLINIC TYPE
Sept 10	Thunder Bay	Jr – Level I & II
Sept 10	Windsor	Jr – Level I & II
Sept 11	Belle River	Jr – Level I & II
Sept 11	Belleville	Jr – Level I & II
Sept 11	Belleville	Sr – Level III & above
Sept 11	Oshawa	Jr – Level I & II
Sept 17	Barrie	Jr – Level I & II
Sept 17	Barrie	Sr – Level III & above
Sept 18	Windsor	Jr – Level I & II
Sept 18	Whitby	Jr – Level I & II
Sept 18	Whitby	Sr – Level III & above
Sept 18	Burlington	Jr – Level I & II
Sept 18	Burlington	Sr – Level III & above
Sept 18	North Simcoe	Jr – Level I & II
Sept 24	Ottawa	Jr – Level I & II
Sept 24	Ottawa	Sr – Level III & above
Sept 24	Brampton	Jr – Level I & II
Oct 1	Oshawa	Jr – Level I & II
Oct 1	Kingston	Jr – Level I & II
Oct 1	Kingston	Sr – Level III & above
Oct 1	Sarnia	Jr – Level I & II
Oct 1	Sarnia	Sr – Level III & above
Oct 1	Mississauga	Sr – Level III & above
Oct 2	Peterborough	Jr – Level I & II
Oct 2	Peterborough	Sr – Level III & above
Oct 2	Aurora	Jr – Level I & II
Oct 2	Oakville	Jr – Level I & II
Oct 8/9	Etobicoke	Jr – Level I
Oct 8/9	Etobicoke	Jr – Level II
Oct 8	Etobicoke	Sr – Level III & above
Oct 22	Ottawa	Jr – Level I & II
Oct 22	Ottawa	Sr – Level III & above
Oct 23	Hamilton	Jr – Level I & II
Oct 23	Hamilton	Jr – Level I & II
Oct 23	Hamilton	Jr – Level I & II
Oct 23	Hamilton	Jr – Level I & II
Oct 30	Hamilton	Sr – Level III & above
Oct 30	Hamilton	Sr – Level III & above

NATIONAL COACHING CERTIFICATION PROGRAM (NCCP) CLINICS		
DATE	LOCATION	NCCP LEVEL
Apr 30/ May 1	Gloucester	Development 1
May 14/15	Oakville	Development 1
Aug 13/14	Kanata	Development 1
Aug 20	Kanata	Coach Level
Sept 10/11	Brantford	Development 1
Sept 25	Oakville	Coach Level
Oct 1/2	Almagnin	Development 1
Oct 2	Brampton	Coach Level
Oct 8	Stoney Creek	Coach Level
Oct 22	Burlington	Coach Level
Oct 23	Burlington	Fundamentals
Dec 10	Leaside	Coach Level

HOCKEY TRAINER'S CERTIFICATION PROGRAM (HTCP) CLINICS		
DATE	LOCATION	HTCP LEVELS
Aug 21	Kanata	Level 1
Sept 18	Brantford	Level 1
Oct 9	Stoney Creek	Level 1
Oct 16	Oakville	Level 1
Oct 29	Burlington	Level 1
Oct 30	Oakville	Level 1
Nov 5	Hamilton	Level 1
Nov 20	Mississauga	Level 1

SPEAK OUT!! PREVENTION SERVICES	
DATE	HOST
Sept 28	Oakville
Oct 1	Kanata
Oct 2	Kanata
Oct 6	Stoney Creek
Oct 13	Oakville
Oct 28	Mississauga
Dec 7	Leaside
Dec 8	Leaside



OWHA Development Programmes

Clinic Type	Level	# Participants	# Clinics
Coaching (NCCP)	Coach	106	5
Coaching (NCCP)	Development 1	81	4
Speak Out (Prevention Services)		141	8
Trainers (HTCP)		140	8
Officiating (HCOP)	I	246	43
Officiating (HCOP)	II	463	
Officiating (HCOP)	III	149	
Officiating (HCOP)	IV	14	
Officiating (HCOP)	V	1	
Officiating (HCOP)	VI	1	
TOTALS		1342	68

OWHA Officiating Programme



Participant Type	# Female	# Male	Total
Total OWHA HCOP Registered Officials	543	1091	1634
OWHA HCOP Clinic Attendees	454	420	874
OWHA HCOP Supervisors	13	24	37
OWHA HCOP Instructors			
OWHA Referee-in-Chief	1	0	1

2011 - 2012 OWHA HCOP Clinic Participants - by Gender

Female 51.9%
Male 48.1%

Officials certified at OWHA HCOP clinics = **874**

"Cross-Over" registered OWHA HCOP Officials = **740**

Note: "Cross-Over" Officials are certified at a non-OWHA HCOP clinics and register with the OWHA

Hey Players!
Have you ever thought about
giving officiating a try?
Watch the OWHA website
for info on the
2012-13 Hockey Canada
Officiating Program (HCOP) Clinics.
www.owha.on.ca



FRIENDS OF THE OWHA

The Ontario Women's Hockey Association would like to extend a sincere thank you to the three Ontario Branches for their support.



The Ontario Women's Hockey Association would like to express our sincere gratitude to Judy Bain and the Board of Directors of Hockey Northwestern Ontario. We have enjoyed a very positive relationship over the past season and look forward to a very positive future together.



The Ontario Women's Hockey Association would like to express our sincere gratitude to Ron Thompson, and the Board of Directors of the Ottawa District Hockey Association. We enjoy very positive dialogue with members of the ODHA and look forward to moving forward with respect and support.



The Ontario Women's Association would like to express our sincere gratitude to Bill Bowman and the Board of Directors of the Ontario Hockey Federation. We appreciate the opportunity to work with the Member Partners who are: Alliance Hockey, Greater Toronto Hockey League, Northern Ontario Hockey Association, Ontario Hockey Association, Ontario Hockey League and the Ontario Minor Hockey Association.



The Ontario Women's Hockey Association
is a member of
Hockey Canada
and
Hockey Development Centre for Ontario



2012 PENALTY FREE SWEEPSTAKES

This marks the 25th year of the Penalty Free Sweepstakes initiative, a promotion created by the members of the Hockey Development Centre for Ontario and supported by the Ontario Ministry of Health Promotion, to foster skills, safety, and sportsmanship in Canada's most popular sport. The success of the Sweepstakes program has also been made possible by the support of spokespersons Paul Henderson, Ron MacLean and Geraldine Heaney and by the generous contribution of all our corporate partners.

Congratulations to all OWSA teams who entered the 2012 Penalty Free Sweepstakes. To qualify, teams must have played a penalty free game between December 1, 2011 - January 31, 2012. Since 1986 the Hockey Development Centre for Ontario program has attracted over close to 138,000 teams and over 2.6 million participants. The OWSA winners were:

<u>Team</u>	<u>Division</u>	<u>Prize</u>
Baltimore DS	Peewee	Karbon Microfleece Zips
Waterloo Ravens	Peewee	Laser Quest Party
South Huron Sabres	Novice	Laser Quest Party
Oakville White Pandas	Novice	Pizza Pizza Party
Thunder Bay Magic	Novice	Pizza Pizza Party
Oshawa Hearts	Novice	R/YR Sports Practice Jerseys
Emo Bolts	Peewee	Viceroy Pail of Pucks
Temiskaming Vet Services	Peewee	Viceroy Pail of Pucks

Quest for Gold

Sincere congratulations to the Ontario Women's Hockey Association's Quest for Gold Ontario Carded Athletes in March 31, 2012!

Tamara Bell
Laura Brooker
Blair Connelly
Jessica Fickel
Tammy Freiburger

Katelyn Gosling
Victoria Head
Liz Knox
Fiona Lester
Megan McHaffre

Katie Mora
Jill Morillo
Caitlin Muirhead
Stephanie Nehring
Jessica Pinkerton

Stacey Scott
Devon Skeats
Britni Smith
Courtney Spoors
Candice Styles

Special thanks to the Ontario Ministry of Health Promotion and Sport





**2012 PWHL CHAMPIONSHIP WEEKEND
WESTERN UNIVERSITY, LONDON ONTARIO
MARCH 30 - 1, 2012
www.pwhl.ca**

Date	Time	Group	Home		Away	
Sat, Mar 31	3:00pm	Semi	Toronto	3	Aurora	0
Sat, Mar 31	5:00pm	Semi	Mississauga	4	Bluewater	3
Sun, Apr 1	1:00pm	Bronze	Mississauga	3	Aurora	2
Sun, Apr 1	3:30pm	Gold	Toronto	1	Bluewater	2

Congratulations to the League Champions, Bluewater Hawks.

The Ontario Women's Hockey Association also congratulates the PWHL on another successful season. We were pleased to highlight the PWHL Championships as part of the OWSA Provincial Championship weekend.



Pool A

Montreal University
Wilfred Laurier University
University of PEI

Pool B

Calgary University
McGill University
University of Alberta

Day	Time	Pool	Team		Team	
Thurs, Mar 8	15:30	A	Montreal	6	Laurier	5
	19:00	B	McGill	0	Calgary	1
Fri, Mar 9	15:30	A	UPEI	0	Laurier	3
	19:00	B	Alberta	0	McGill	4
Sat, Mar 10	15:30	A	UPEI	1	Montreal	4
	19:00	B	Alberta	2	Calgary	4
Sun, Mar 11	11:00	5 th place	UPEI	0	Alberta	1
	14:00	Bronze	Laurier	0	McGill	4
	18:00	Gold	Calgary	5	Montreal	1

Congratulations to Montreal's University on their gold medal performance! Thanks to Alberta University on hosting the successful 2012 CIS Women's Hockey Championship.



TEAM IRWIN – GOLD MEDALISTS



TEAM AGOSTA – SILVER MEDALISTS



TEAM APPS – BRONZE MEDALISTS



TEAM JOHNSTON



OFFICIATING TEAM



TEAM PIPER



TEAM KELLAR



TEAM HEFFORD



TEAM BONHOMME

INTERNATIONAL TOUR - NEPEAN WILDCATS MIDGET AA



Nepean Wildcats Tour of Finland, Sweden and Germany

December 27, 2011 through January 7, 2012

Visits: Helsinki, Stockholm, and Munich

December 29	Game vs. Kiekko-Nikkarit in Riihimaki, Finland
December 30	Game vs KJT Kerava in Kerava.(30km from Helsinki, Finland)
January 3	Game vsOrmsta /SDE, Ormsta, Sweden
January 4	Game vsSegeltorps IF, Sweden
January 6	Game vsGarmishPartenkircheninGarmish, Germany

Tour included 11 skaters and 1 goalie; Head Coach, Assistant Coach, 2 trainers and 2 parents and Mary Ann Blunt-OWHA representative.

Itinerary:

- December 27th - Departed Ottawa.
- December 28th - Arrived in Frankfurt airport for connecting flight to Helsinki hotel at 7:00 pm.
- December 29th - Morning walking/bus tour of Helsinki. Played game in Riihimaki vs. Kiekko-Nikkarit. Nepean won 7-1.
- December 30th - Sightseeing guided city bus tour. Played game in Keravavs KJT Kerava at Hyryla Ice Rink. Nepean won 4-1.
- December 31st - Missed the ferry to Tallin, Estonia so spent the day shopping/resting. Attended New Year's celebrations with the team at the Helsinki downtown city square.
- January 1st - Free day- bus left in afternoon for overnight ferry to Stockholm. It was very rough sailing with little sleep. All were happy to arrive in Stockholm the next morning.
- January 2nd - Guided sightseeing tour of Stockholm, checked into hotel, went for late lunch and walking/shopping until early evening.
- January 3rd - Went to the museum that houses a ship that sank in Stockholm harbour over 300 years ago and was pulled intact from the harbour in 1961. Very interesting and revealing of life in Stockholm at that time. Travelled to Enebyberg to play Ormsta/SDE. Nepean lost 2-1.
- January 4th - Free day and we went to changing of the guards at the palace, ate in an authentic Swedish restaurant and walked about Old Town. Game vsSegeltorps IF. Nepean won 6-3.
- January 5th - Flew from Stockholm to Munich. Enjoyed a 2 hour bus tour of Munich and walked around as much as we could considering it was pouring rain.
- January 6th - Travelled to Dachau Concentration Camp in the morning and to King Ludwig's Linderhof Palace in the afternoon. Very interesting and worth the visit when in Munich area. This is the first snow we had when visiting the palace in the Alps. Played in Garmishvs Garmish Partenkirchen. Nepean won 3-1.
- January 7th - Flew back to Montreal and bussed to Ottawa.

Notes on the Experience:

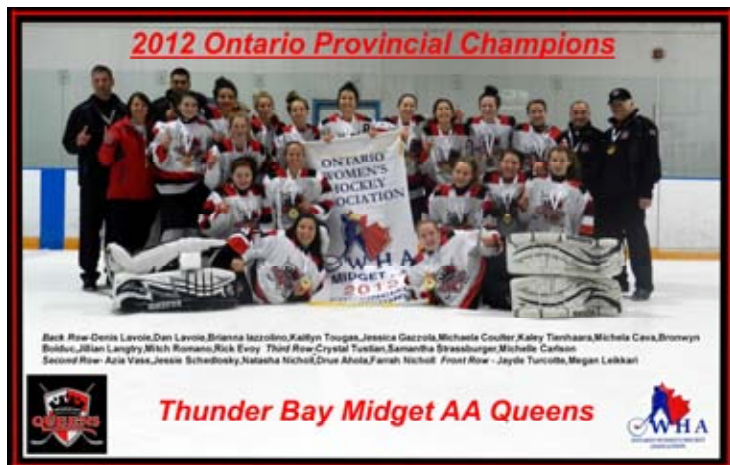
- Great experience for the players on and off the ice. Good teambuilding and life experiences.
- Players ranged in age from 14-20 and the teams we played against ranged from 14-33 years old.
- Officiating was good. Most games were 20 minute periods with 2 floods.
- Tourist sites were interesting throughout but all enjoyed Germany.
- Time difference and lack of daylight were significant in getting into a normal sleeping pattern for all. It was good to have such a full itinerary so that you were made to keep active during the day so that you adjusted to the time difference.
- Accommodations were in nice, centrally located hotels which enabled us to walk to most sights, shopping and restaurants.
- Overall this was an amazing experience.



2012 ESSO CUP CHAMPIONSHIP

CONGRATULATIONS THUNDER BAY QUEENS - SILVER

HST – Capital District Cyclones	ONT – Thunder Bay Queens	WST – Pembina Valley Hawks
PAC – Edmonton Thunder	ATL – Halifax Metro Boston Pizza	QUE – Rebelles de Saguenay-Lac St-Jean



Gm #	Time	Round	Game
1	Apr 22, 12	Round Robin	QUE 1 – ATL 5
2	Apr 22, 12	Round Robin	WST 1 – PAC 0
3	Apr 22, 12	Round Robin	ONT 12 – HST 1
4	Apr 23, 12	Round Robin	QUE 0 – WST 4
5	Apr 23, 12	Round Robin	PAC 1 – ONT 6
6	Apr 23, 12	Round Robin	ATL 5 – HST 2
7	Apr 24, 12	Round Robin	ONT 8 – QUE 1
8	Apr 24, 12	Round Robin	WST 2 – ATL 1
9	Apr 24, 12	Round Robin	HST 0 – PAC 4
10	Apr 25, 12	Round Robin	ATL 2 – ONT 5
11	Apr 25, 12	Round Robin	PAC 1 – QUE 2
12	Apr 25, 12	Round Robin	HST 2 – WST 4
13	Apr 26, 12	Round Robin	PAC 4 – ATL 0
14	Apr 26, 12	Round Robin	WST 4 – ONT 5
15	Apr 26, 12	Round Robin	QUE 2 – HST 3
16	Apr 27, 12	Semi-Final	PAC 1 – WST 2
17	Apr 27, 12	Semi-Final	ATL 2 – ONT 4
18	Apr 28, 12	Bronze	ATL 1 – PAC 4
19	Apr 28-12	Gold	WST 4 – ONT 2

#	Player/Coach	P	Hometown/Prov
30	Jayde Turcotte	G	Thunder Bay, ON
35	Megan Leikkari	G	Thunder Bay, ON
4	Brianna Iazzolino	D	Thunder Bay, ON
5	Azia Vass	D	Thunder Bay, ON
10	Michaela Coulter	D	Thunder Bay, ON
14	Jessie Schedlosky	D	Atikokan, ON
19	Farrah Nicholl	D	Thunder Bay, ON
21	Michelle Carlson	D	Thunder Bay, ON
7	Natasha Nicholl	F	Thunder Bay, ON
8	Michela Cava	F	Thunder Bay, ON
9	Kaitlyn Tougas	F	Thunder Bay, ON
11	Bronwyn Bolduc	F	Thunder Bay, ON
12	Kaley Tienhaara	F	Thunder Bay, ON
16	Jillian Langtry	F	Fort Frances, ON
17	Samantha Strassburger	F	Schreiber, ON
18	Jessica Gazzola	F	Thunder Bay, ON
22	Drue Ahola	F	Thunder Bay, ON
	Denis Lavoie	C	Thunder Bay, ON
	Dan Laovie	AC	Thunder Bay, ON
	Mitch Romano	AC	Thunder Bay, ON
	Rick Evoy	Goal C	Thunder Bay, ON
	Crystal Tustian	MGR/TR	Thunder Bay, ON
	Fran Rider	OWHA	Mississauga, ON



Congratulations OWHA Team Ontario! Team Ontario Red won the Gold for the seventh consecutive time. The team went through the preliminary round undefeated, beating Team Manitoba 8-2, Team British Columbia 4-1 and Team Alberta 1-0. In the semi-final game, Team Ontario Red beat Team Atlantic 5-1 in the exciting gold medal game televised on TSN2 with Team Ontario Red's Amanda Leveille making 22 saves for her second shutout of the tournament. Jamie McDonnell, Victoria Pittens and Laura Stacey scored the goals for Team Ontario Red, which is 35-1 all time at the U18 Nationals

Congratulations to Team Ontario Blue on an excellent championship. In the first game, Team Ontario Blue lost 4-1 despite a very solid performance against Team Quebec. Team Ontario Blue won their second game 3-1 against Team Saskatchewan and lost their third game against Team Atlantic 6-2. Despite a valiant effort Team Ontario Blue did not make it to the finals.

Congratulations to all participants for their hard work and dedication. We look forward to the excellence on the ice as well as the friendships off the ice as we continue to work together for the good of all girls and women who participate in female hockey.

U-18 WOMEN'S NATIONAL CHAMPIONSHIPS

Saguney, Quebec

OWHA – TEAM ONTARIO RED – NATIONAL CHAMPIONS

TEAM ONTARIO RED – GOLD MEDALISTS					TEAM ONTARIO BLUE				
#	Name	P	Hometown	2011-12 Team	#	Name	P	Hometown	2011-12 Team
29	Elaine Chuli	G	Waterford, ON	Stoney Creek Sabres	1	Kayla Black	G	Blyth, ON	Bluewater Hawks
31	Amanda Leveille	G	Kingston, ON	Kanata Ottawa Senators	29	Brianna Quade	G	Newcastle, ON	Whitby Wolves
2	Morgan Richardson	D	Ottawa, ON	Kanata Ottawa Senators	11	Paige Horton	D	St. Thomas, ON	London Devilettes
11	Kristen Tamberg	D	Toronto, ON	Mississauga Chiefs	15	Olivia Whitford	D	Milton, ON	Burlington Barracudas
13	Erin Ambrose	D	Keswick, ON	Toronto Aeros	17	Bryanna Neuwald	D	Oakville, ON	Mississauga Chiefs
21	Cydney Roesler	D	Stittsville, ON	Kanata Ottawa Senators	24	Emma Krobs	D	Toronto, ON	Toronto Aeros
41	Melissa Channell	D	Oakville, ON	Burlington Barracudas	25	Jillian Skinner	D	Markham, ON	Mississauga Chiefs
73	Lindsey West	D	Ajax, ON	Whitby Wolves	74	Lauren Merkley	D	Mississauga, ON	Mississauga Chiefs
7	Laura Stacey	F	Kleinburg, ON	Toronto Aeros	6	Taylor Accursi	F	Ancaster, ON	Stoney Creek Sabres
8	Michela Cava	F	Thunder Bay, ON	Thunder Bay Queens	7	Emma Woods	F	Harley, ON	Waterloo K-W Rangers
9	Kristyn Capizzano	F	Oakville, ON	Mississauga Chiefs	9	Molly Contini	F	Arthur, ON	Waterloo K-W Rangers
10	Jaimie McDonnell	F	East York, ON	Toronto Aeros	10	McKibbin, Sydney	F	Oakville, ON	Stoney Creek Sabres
14	Victoria Pittens	F	Whitby, ON	Whitby Wolves	14	Lindsey Allen	F	Toronto, ON	Toronto Aeros
15	Rebecca Kohler	F	St. Thomas, ON	Bluewater Hawks	19	Cristin Shanahan	F	Ottawa, ON	Kanata Ottawa Senators
16	Sarah Nurse	F	Hamilton, ON	Stoney Creek	23	Hayley Masters	F	Shanty Bay, ON	Mississauga Chiefs
17	Nicole Brown	F	Oshawa, ON	Whitby Wolves	77	Nicole Martindale	F	Brooklin, ON	Whitby Wolves
18	Cayley Mercer	F	Exeter, ON	Bluewater Hawks	90	Hannah Bale	F	Oakville, ON	Stoney Creek
19	Ailish Forfar	F	Sutton West, ON	Toronto Aeros	91	Hanna Bunton	F	Belleville, ON	Whitby Wolves
22	Hilary Lloyd	F	Toronto, ON	Mississauga Chiefs	93	Brianna Veerman	F	Burlington, ON	Aurora Panthers
27	Nicole Connery	F	Newmarket, ON	Mississauga Chiefs	94	Leah Buress	F	Windsor, ON	Southwest Wildcats
	Steve Seguin	HC	Long Sault, ON			Dave Gwyn	HC	Ajax, ON	Scarborough Sharks
	Bradi Cochrane	AC	Mississauga, ON	Oakville Hornets		Mandi Duhamel	AC	Ottawa, ON	CIS – Carleton
	Randy Mar	AC	Ottawa, ON			Cassandra Seguin	AC	Ottawa, ON	CIS - Ottawa
	Cathy Kennedy	EM	Kingston, ON			Phil Voutier	EM	Toronto, ON	
	Denise Marjerrison	BR	Alliston, ON	OWHA Representative		Bryan Chappell	BR	Point Edward, ON	OWHA Representative

The Ontario Women's Hockey Association congratulates all members of Team Ontario Red and Team Ontario Blue on excellence both on and off the ice.
Special thanks to the City of Saguney, Quebec and the local volunteers, sponsors and fans.

#	Date	T	S	T	S		#	Date	T	S	T	S	
1	Nov 2-11	AB	1	BC	2	A	10	Nov 4-11	ATL	6	ON-B	2	B
2	Nov 2-11	SK	0	ATL	4	B	11	Nov 4-11	AB	0	ON-R	1	A
3	Nov 2-11	ON-R	8	MB	2	A	12	Nov 4-11	SK	3	QC	6	B
4	Nov 2-11	QC	4	ON-B	1	B	13	Nov 5-11	SK	0	AB	3	7th
5	Nov 3-11	MB	1	AB	2	A	14	Nov 5-11	BC	5	ON-B	0	5th
6	Nov 3-11	ON-B	7	SK	0	B	15	Nov 5-11	ATL	1	ON-R	5	Semi
7	Nov 3-11	BC	1	ON-R	4	A	16	Nov 5-11	MB	1	QC	6	Semi
8	Nov 3-11	ATL	1	QC	2	B	17	Nov 6-11	MB	3	ATL	1	Bronze
9	Nov 4-11	BC	1	MB	2	A	18	Nov 6-11	QC	0	ON-R	3	Gold

2012 WORLD WOMEN'S U18 HOCKEY CHAMPIONSHIP

Group A	Czech Republic (CZE)	Russia (RUS)	Sweden (SWE)	United States (USA)
Group B	Canada (CAN)	Finland (FIN)	Germany (GER)	Switzerland (SUI)

Gm #	Time	Group	Game
1	Dec 31	A	CZE 1 – SWE 4
2	Dec 31	B	CAN 13 – SUI 1
3	Dec 31	A	USA 8 – RUS 0
4	Dec 31	B	FIN 3 – GER 0
5	Jan 1	A	CZE 2 – RUS 0
6	Jan 1	B	FIN 3 – SUI 5
7	Jan 1	A	SWE 0 – USA 7
8	Jan 1	B	GER 0 – CAN 6
9	Jan 3	A	RUS 2 – SWE 6
10	Jan 3	B	SUI 1 – GER 6
11	Jan 3	A	USA 13 – CZE 1
12	Jan 3	B	CAN 7 – FIN 0
13	Jan 4	Quarter	SWE 2 – FIN 1
14	Jan 4	Relegation	SUI 4 – RUS 2
15	Jan 4	Quarter	GER 2 – CZE 1
16	Jan 6	Semi	USA 7 – GER 1
17	Jan 6	5 th	FIN 5 – CZE 3
18	Jan 6	Semi	CAN 7 – SWE 0
19	Jan 6	Relegation	RUS 5 – SUI 3
20	Jan 7	Bronze	SWE 4 – GER 1
21	Jan 7	Relegation	SUI 2 – RUS 3
22	Jan 7	Gold	USA 0 – CAN 3

2012 WORLD U18 WOMEN CHAMPIONSHIP ZLIN, CZECH REPUBLIC



#	Player/Coach	P	Hometown/Prov	2011 – 2012 Club Team
29	Elaine Chuli	G	Waterford, Ont.	Stoney Creek (PWHL)
30	Emerance Maschmeyer	G	Bruderheim, Alta.	Lloydminster (AJHL)
2	Morgan Richardson	D	Ottawa, Ont.	Ottawa (PWHL)
10	Alexis Crossley	D	Cole Harbour, NS	Shattuck-St. Mary's (US Prep)
13	Erin Ambrose	D	Keswick, Ont.	Toronto (PWHL)
14	Jordan Krause	D	Kelowna, B.C	Pursuit of Excellence (Midget AAA)
18	Halli Krzyzaniak	D	Neepawa, Man.	Pursuit of Excellence (Midget AAA)
21	Cydney Roesler	D	Stittsville, Ont.	Ottawa (PWHL)
23	Abbey Frazer	D	Hudon, Que	John Abbott (Collegial AA)
3	Emily Clark	F	Saskatoon, Sask.	Saskatoon (SGMAAAHL)
5	Ashleigh Brykaliuk	F	Brandon, Man.	Balmoral Hall (JWHL)
7	Laura Stacey	F	Kleinburg, Ont.	Toronto (PWHL)
11	Taylor Woods	F	Morden, Man.	Balmoral Hall (JWHL)
12	Kristyn Capizzano	F	Oakville, Ont.	Mississauga (PWHL)
15	Meghan Dufault	F	Winnipeg, Man.	Balmoral Hall (JWHL)
16	Sarah Lefort	F	Orms town, Que.	Stanstead College (NAPHA)
19	Erika Sowchuk	F	Fernie, B.C	Edge School (JWHL)
20	Cayley Mercer	F	Exeter, Ont.	Bluewater (PWHL)
24	Nicole Connery	F	Newmarket, Ont.	Mississauga (PWHL)
25	Rebecca Kohler	F	St. Thomas, Ont.	Bluewater (PWHL)
26	Shannon MacAulay	F	Mount Herbert, PEI	Warner School (JWHL)
28	Catherine Dubois	F	Quebec City, Que.	Ontario Hockey Academy (U19)
	Pierre Alain	HC	Mirabel, CAN	St-Jerome (Collegial AA)
	Jim Fetter	AC	Waterloo, Ont.	St. Cloud State University (WCHA)
	Carla MacLeod	AC	Calgary, Alta.	Mount Royal University (CIS)

2012 Canadian Women's Hockey League - Clarkson Cup Championship
 Gale Centre Niagara Falls, Ontario March 21 – 25, 2012
 CWHL/WWHL Championship



Date	Team	Sc		Team	Sc
Thurs. Mar 22	Montreal Stars	7	Round Robin	Toronto Furies	0
Thurs. Mar 22	Boston Blades	2	Round Robin	Brampton HC	3
Fri. Mar 23	Montreal Stars	2	Round Robin	Brampton HC	0
Fri. Mar 23	Boston Blades	5	Round Robin	Toronto Furies	2
Sat. Mar 24	Brampton HC	4	Round Robin	Toronto Furies	2
Sat. Mar 24	Montreal Stars	5	Round Robin	Boston Blades	4
Sun. Mar 25	Montreal Stars	4	Final	Brampton HC	2



2012 Clarkson Cup Champions - Montreal Stars



2012 IIHF WOMEN'S WORLD HOCKEY CHAMPIONSHIP

Group A	Canada (CAN)	Finland (FIN)	Russia (RUS)	United States of America (USA)
Group B	Germany (GER)	Switzerland (SUI)	Slovakia (SVK)	Sweden (SWE)

Gm #	Time	Group	Game
1	Apr – 7	B	SVK 1 – SWE 5
2	Apr – 7	A	FIN 5 – RUS 4
3	Apr – 7	B	SUI 2 – GER 3
4	Apr – 7	A	USA 9 – CAN 2
5	Apr – 8	B	SWE 2 – GER 1
6	Apr – 8	A	CAN 3 – FIN 2
7	Apr – 8	B	SUI 2 – SVK 1
8	Apr – 8	A	USA 9 – RUS 0
9	Apr – 9	B	SWE 2 – SUI 3
10	Apr – 9	A	CAN 14 – RUS 1
11	Apr – 9	B	GER 2 – SVK 4
12	Apr – 9	A	FIN 0 – USA 11
13	Apr – 11	Quarter	RUS 2 – SUI 5
15	Apr – 11	Quarter	FIN 2 – SWE 1
14	Apr – 11	Relegation	GER 2 – SVK 1
16	Apr – 13	Relegation	SVK 1 – GER 3
20	Apr – 14	Cancelled	GER winner best of 3 series
17	Apr – 13	Semi	CAN 5 – FIN 1
19	Apr – 13	Semi	USA 10 – SUI 0
18	Apr – 13	5 th & 6 th	RUS 1 – SWE 2
21	Apr – 14	Bronze	SUI 6 – FIN 2
22	Apr – 14	Gold	USA 4 – CAN 5

2012 IIHF WOMENS WORLD CHAMPIONSHIP UNITED STATES BURLINGTON, VT



**CONGRATULATIONS
TEAM
CANADA
GOLD**



#	Player/Coach	P	Hometown/Prov	2011 - 2012 Team
1	Shannon Szabados	G	Edmonton, Alta.	N. Alberta Inst. Of Technology
31	Genevieve Lacasse	G	Kingston, Ont.	Providence College (HE)
32	Charline Labonte	G	Boisbriand, Que	McGill University (CIS)
3	Jocelyne Larocque	D	St. Anne, Man.	University of Minnesota-Duluth (WCHA)
5	Lauriane Rougeau	D	Beaconsfield, Que	Cornell (ECAC)
8	Laura Fortiino	D	Hamilton, Ont	Cornell (ECAC)
11	Courtney Birchard	D	Mississauga, Ont	Brampton (CWHL)
12	Meaghan Mikkelson	D	St. Albert, Alta.	Alberta (CWHL)
18	Catherine Ward	D	Montreal, Que	Montreal (CWHL)
25	Tessa Bonhomme	D	Sudbury, Ont.	Toronto (CWHL)
2	Meghan Agosta	F	Ruthven, Ont.	Montreal (CWHL)
6	Rebecca Johnston	F	Sudbury, Ont.	Cornell University (ECAC)
10	Gillian Apps	F	Unionville, Ont.	Brampton (CWHL)
13	Caroline Ouellette	F	Montreal, Que	Montreal (CWHL)
16	Jayna Hefford	F	Kingston, Ont.	Brampton (CWHL)
17	Bailey Bram	F	Ste-Anne, Man	Mercyhurst University (CHA)
19	Brianne Jenner	F	Oakville, Ont	Cornell (ECAC)
20	Jennifer Wakefield	F	Pickering, Ont	Boston University (HE)
21	Haley Irwin	F	Thunder Bay, Ont.	University of Minnesota-Duluth (WCHA)
22	Hayley Wickenheiser	F	Shaunavon, Sask.	University of Calgary (CWUAA)
24	Natalie Spooner	F	Scarborough, Ont.	Ohio State University (WCHA)
28	Vicki Bendus	F	Wasaga Beach, Ont	Brampton (CWHL)
29	Marie-Phillip Poulin	F	Beauceville, Que	Boston University (HE)
	Dan Church	HC	North York, Ont.	York University (CIS)
	Doug Derraugh	AC	Anrrior, Ont	Cornell University (ECAC)
	Danielle Goyette	AC	St-Nazaire, Que	University of Calgary (CIS)

2012 MECO CUP - U22 HOCKEY CHAMPIONSHIP

Canada (CAN)	Germany (GER)	Switzerland (SUI)
Finland (FIN)	Russia (RUS)	Sweden (SWE)

Gm #	Time	Group	Game
1	Jan-3	-	RUS 3 – FIN 3
2	Jan-3	-	SUI 1 – SWE 5
3	Jan-3	-	CAN 4 – GER 1
4	Jan-4	-	CAN 6 – RUS 0
5	Jan-4	-	FIN 6 – SUI 4
6	Jan-4	-	SWE 2 – GER 1
7	Jan-6	-	CAN 6 – SUI 0
8	Jan-6	-	FIN 0 – SWE 3
9	Jan-6	-	GER 4 – RUS 1
10	Jan-7	-	RUS 4 – SUI 5
11	Jan-7	-	SWE 3 – CAN 2
12	Jan-7	-	FIN 3 – GER 0
15	Jan-8	-	CAN 2 – FIN 3

2012 MECO CUP - U22 WOMEN CHAMPIONSHIP FUSSEN, GERMANY



CONGRATULATIONS
**TEAM
CANADA
BRONZE**



#	Player/Coach	P	Hometown/Prov	2011 - 2012 Team
30	Amanda Mazzotta	G	London, ON	Cornell University (ECAC)
31	Genevieve Lacasse	G	Scarborough, ON	Providence College (Hockey East)
2	Melissa Channell	D	Oakville, ON	Burlington (PWHL)
3	Sarah Edney	D	Mississauga, ON	Harvard University (Hockey East)
4	Brittany Haverstock	D	Hammonds Plains, NS	University of Wisconsin (WCHA)
6	Hayleigh Cudmore	D	Oakville, ON	Cornell University (ECAC)
7	Tara Watchorn	D	Newcastle, ON	Boston University (Hockey East)
17	Cassandra Poudrier	D	Lachenaie, Que	Dawson College
23	Saige Pacholok	D	Edmonton, Alta	University of Wisconsin (WCHA)
8	Jessica Campbell	F	Melville, Sask.	Cornell University (ECAC)
9	Jillian Saulnier	F	Halifax, NS	Cornell University (ECAC)
11	Laura McIntosh	F	Waterloo, ON	Ohio State University (WCHA)
12	Mallory Deluce	F	London, ON	Toronto (CWHL)
13	Bailey Bram	F	Ste. Anne, Man	Mercyhurst College (CHA)
16	Chelsea Karpenko	F	Winnipeg, Man	Cornell University (ECAC)
18	Jamie Lee Rattray	F	Kanata, ON	Clarkson University (ECAC)
19	Catherine White	F	Brampton, ON	Cornell University (ECAC)
20	Isabel Menard	F	Ottawa, ON	Boston University (Hockey East)
24	Sarah Davis	F	Paradise, NL	University of Minnesota (WGHA)
25	Nicole Kosta	F	Mississauga, ON	Quinnipiac University (ECAC)
28	Shelby Bram	F	Ste Anne, Man	Mercyhurst College (CHA)
	Laura Schuler	HC	Scarborough, ON	University of Minnesota Duluth (WCHA)
	Rachal Flanagan	AC	Guelph, ON	Hockey Canada
	Rebecca Russell	AC	Lethbridge, NL	Okanagan Hockey Academy



CELEBRATION OF FEMALE HOCKEY AT ALL AGES IIHF WORLD GIRLS' HOCKEY DAY!

World Girls' Hockey Day celebrates the future of female hockey around the world. The IIHF hosted the first annual World Girls' Hockey Day on October 2nd, 2011 to provide girls of all ages the opportunity to try ice hockey and to give exposure and credibility to leading role models in the sport. The OWHA registered with the IIHF as a host to incorporate all OWHA programs as part of the Ontario, Canada Celebration.

HOST	EVENT
Toronto Furies of the CWHL	In collaboration with SickKids Foundation, 80 kids with Crohns and Colitis had the opportunity to meet players, skate at the ACC and participate in drills.
Hamilton Women's Hockey League	Hosted clinics for adult female players of all levels.
Kanata GHA	"Bring a Friend" to Hockey Day with 2 sessions including demonstrations of how to put on hockey gear, on-ice activities and short scrimmages.
North York GHL	Allow new girls to explore the game and view competitive level hockey games.
Battle of the Blades	Tessa Bonhomme was the first female hockey player to participate in the show. Bryan Berard and Marie-France Dubreuil and skating for the D.I.F.D. charity in memory and honour of Daron Richardson.
OUA	Various activities involving universities with female hockey teams.
Barrie GHA	Barrie vs. Stoney Creek OWHA/PWHL Game
Bluewater GHA	Bluewater vs. Durham West OWHA/PWHL Game
Brampton Canadettes GHA	Open "Learn to Skate" programs introducing young girls to skating from different ethnic groups lead by young ladies from the rep teams.
Clearview GHA, Ice Cats	Hosted a sanctioned tournament and community exposure through banners and bag tags.
Fort France Girls WHA	All registered payers were invited to bring a friend to an on-ice and off-ice event
Glengary Girls Hockey Association	House League play began "like the pros" with player introductions, Oh Canada and media coverage.
Gloucester-Cumberland	Teams playing on October 2nd wore pink & encouraged to bring a friend to the game.
Guelph Girls Hockey	Attended the Midget AA game in their hockey jerseys with a draw for Gryphon Women's Hockey Tickets.
Markham Stouffville Midget B	Friends and family were invited to an open skate and skills competition with the family and friends on the bench cheering everyone on.
Mississauga Chiefs - Pee wee AA	Participated in the Run-For-The-Cure for Breast Cancer Research.
Mississauga Girls Hockey League	"Try Hockey for the First Time" provided an opportunity to skate with other players of the same age.
South West Wildcats (Sunparlour FHA)	Southwest Wildcats vs. Toronto Aeros OWHA/PWHL Game
Stoney Creek GHA	invited all girls and women to bring a friend and come out and try hockey.
Sudbury DGHA	Participated in the Run-For-The-Cure for Breast Cancer Research.
Toronto-Leaside Wildcats	House-league teams and "Hockey Fundamentals" program hit the ice for the second week.
Wallace Hockey Association & Upper Maitland Mustangs	Hosted 2 ice sessions for members and anyone interested in trying hockey for the first time.
Waterloo GHA	Waterloo vs. Ottawa OWHA/PWHL Game
Whitby GHA	Whitby vs. Cambridge OWHA/PWHL Game

Discipline Report – 2011-2012

Novice

There were a total of 8 suspensions at the Novice Level. The Novice B level had 4 suspensions or 50% of all suspensions at the Novice Level. Of these 8 suspensions, 7 were given to Coaches. Disputing a Call was the most frequently called suspension with 4 or half of all suspensions.

Atom

There were 33 suspensions at the Atom Level. This represents a slight decrease (8%) from the number of suspensions called last year. The Atom AA level received the most suspensions with 11, which represents 33% of the suspensions. The Atom B level was the next highest with 8 suspensions. Disputing a Call was the most frequently called suspension with 11 or 33% of all Atom suspensions. All Levels received relatively the same number of these types of suspensions. Coaches received 18 of the 33 suspensions at the Atom level which represents 55% of all Atom level suspensions. Coaches at the Atom B level received the most suspensions with 6 suspensions.

Peewee

There were 112 suspensions at this level. This represents a slight increase (9%) in the number of suspensions compared to last season. The Peewee AA and Peewee B levels both received the most suspensions with 29 each, or 26% of all Peewee suspensions. This was followed closely by the Peewee A Level with 23 suspensions and the Peewee BB Level with 22 suspensions. Checking from Behind was the highest called suspension with 36 or 32% of all Peewee suspensions. The Peewee B level received the most Checking from Behind suspensions with 11 or 31%. Disputing a Call was the next highest with 22 or 20% of all suspensions. Coaches received 32 or 29% of all suspensions at the Peewee level. Coaches at the Peewee AA level received the most suspensions with 9 or 28% of all Coaching suspensions.

Bantam

There were 294 suspensions at this level. This represents a 7% decrease in the number of suspensions received last year. The Bantam AA level received the most with 66 suspensions or 22% of all Bantam suspensions. The next highest was Bantam B with 62 suspensions or 21%. The suspension called most often was Checking from Behind with 81 suspensions or 28% of all suspensions. The Bantam AA level received the most of these types of suspensions with 20 or 25%. The next highest suspension called was Boarding/Body Checking with 48 suspensions. Coaches received 60 or 20% of all suspensions at the Bantam level. The Bantam B and Bantam AA level coaches received the most suspensions with 15 and 14 respectively or 25% of all coaching suspensions.

Midget

There were 545 suspensions at the Midget level. This represents a slight increase (4%) in the number of suspensions received last year. The Midget AA level received the highest number of suspensions with 134 or 25% of all Midget suspensions. This is an increase in suspensions of 8% from last year at the Midget AA level. The next highest was the Midget A level with 122 suspensions or 22%. Checking from Behind was the suspension called most often with 129 or 24% of all Midget suspensions. The Midget A and Midget AA levels both received the most of these types of suspensions with 35 and 34 suspensions respectively or 27%. The next highest suspension called was Disputing a Call with 60 suspensions. Coaches received 74 or 14% of all suspensions at the Midget level. The Coaches at the Midget AA level received 21 or 28% of all coaching suspensions at the Midget level.

Intermediate

The Intermediate Level received 157 suspensions. This represents a 12% decrease in the number of suspensions received last year. This is the second year in a row that the Intermediate Level has decreased the number of suspensions received. The Intermediate A level received the most suspensions with 76 or 48% of all Intermediate suspensions. The Intermediate House League and Intermediate AA levels received the next highest number of suspensions with 38 and 37 suspensions respectively which is half the number received at the Intermediate A level. Checking from Behind was called most often at the Intermediate level with 33 or 21%. The Intermediate AA level received the most of these types of suspensions with 16 or 49% of all Checking from Behind suspensions. The next highest suspension called was Disputing a Call with 16 or

10%. Coaches received 14 or 9% of all suspensions at this level. The Intermediate House League Coaches received more than half of these suspensions with 9 or 64%.

Senior

There were 99 Senior level suspensions. This represents a 20% decrease in suspensions compared to the number of suspensions received last year. This is also the second year in a row that the Senior Level has decreased the number of suspensions received. The Senior A level received the most at 41 or 41% of all Senior suspensions. The next highest level was Senior House League which received 27 suspensions. Both Checking from Behind and Abusive Language were called most often at the Senior Level with 14 each or 14% of all suspensions at this level. The Senior A Level had the most of these types of suspensions with 4 in each category. Coaches received 7 suspensions. The Senior A level coaches received 5 of the 7 coaching suspensions.

Unknown Levels

There were 4 suspensions where the level was not identified.

Referees

There were a total of 902 referees identified as having called the suspension penalties this year. Most of the penalties called were spread out amongst the referees. However, there were 5 referees who called 20 or more penalties.

Overall

Overall this year there were 1252 suspensions called. This represents a decrease (4%) over last year where 1302 suspensions were called.

The suspension called most often was Checking from Behind with 299, which represents 24% of all suspensions called. The Midget level received the most Checking from Behind suspensions with 129 or 43% of these types of suspensions. The next highest suspension called was Disputing a Call with 162 or 13%. The Midget Level also received the most of these types of suspensions 60 or 37%.

Again this year, the Midget category received the highest number of suspensions with 545 of the 1252 or 44% of all suspensions. The next highest category receiving suspensions was Bantam with 294 suspensions or 24%. The Midget AA level again received the highest number of suspensions with 134 or 11% of all suspensions. The next highest was again the Midget A with 122 suspensions.

Coaches received a total of 212 or 17% of all suspensions. The Midget level coaches received the most with 74 or 35% of all Coach suspensions.

Comparison between Previous Years:

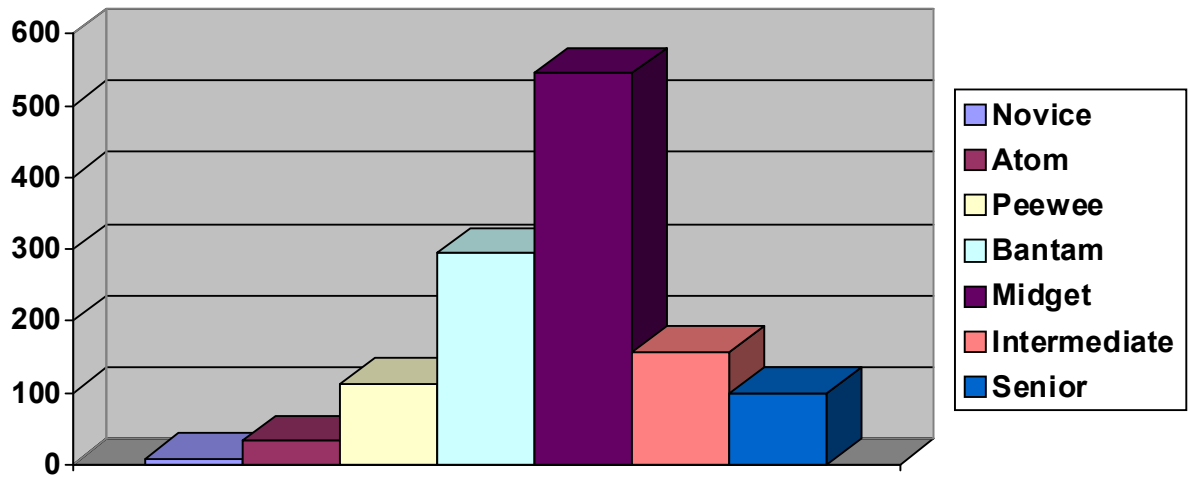
Season	Novice	Atom	Peewee	Bantam	Midget	Intermediate	Senior	Unknown	Total
2011/12	8	33	112	294	545	157	99	4	1252
2010/11	7	40	103	314	526	177	124	11	1302
2009/10	9	40	163	356	629	207	162	35	1602
2008/09	3	32	146	283	530	166	180	19	1359
2007/08	5	36	112	313	603	223	146	12	1450
2006/07	8	27	115	332	621	210	139	8	1469
2005/06	3	33	113	299	580	196	99	3	1326
2004/05	2	23	105	327	497	250	135	12	1351
2003/04	1	28	80	286	426	186	107	32	1146
2002/03	1	18	89	227	302	216	106	12	971

	Misconduct Penalties							Game Misconduct Penalties					Fighting Penalties							CFB											
NAME	M10 (Misconduct)	M14 (Misconduct)	M20 (Misconduct)	M21 (Misconduct)	M22 (Misconduct)	M23 (Misconduct)	M34 (Misconduct)	League Imposed GM	GM (Game Misconduct Unspecified)	GM20 (Disputing a Call)	GM21 (Abusive Language)	GM26 (2 Misconducts - Same Game)	GM28 (Interference from Bench)	GM30 (Fighting)	INS36 (Instigator)	AGG37 (Aggressor)	GM31 (2nd Fight same stoppage)	GM32 (Third Man In)	GM32 (Peace Maker)	GM33 (Leaving the Bench)	GM34 (Leaving Penalty Box to start a	GM50 (Check From Behind (Minor))	GM51 (Check From Behind (Major))	GM39 (Hair Pulling)	GM53 (High Stick)	GM54 (Cross Checking)	GM55 (Slashing)	GE56 (Game Ejection)	GM57 (Boarding / Body Checking)	GM58 (Elbowing / Kneeing)	
Novice A	0	0	0	0	0	0	0	0	0	1	0	0	0	0	0	0	0	0	0	0	0	0	0	0	0	0	0	0	0	0	
Novice B	0	0	0	0	0	0	0	0	0	2	1	0	0	0	0	0	0	0	0	0	0	0	0	0	0	0	0	0	0	0	
Novice Unknown	0	0	0	0	0	0	0	0	0	0	0	0	0	0	0	0	0	0	0	0	0	0	0	0	0	0	0	0	0	0	
TOTAL - NOVICE	0	0	0	0	0	0	0	0	0	4	2	0	0	0	0	0	0	0	0	0	0	0	0	0	0	0	0	0	0	0	
Atom AA	0	0	0	0	0	0	0	0	0	3	0	0	0	0	0	0	0	0	0	0	0	3	1	0	0	0	0	0	0	2	0
Atom A	0	0	0	0	0	0	0	0	0	2	2	0	0	0	0	0	0	0	0	0	0	0	0	0	0	0	0	0	0	1	0
Atom BB	0	0	0	0	0	0	0	0	0	2	1	0	0	0	0	0	0	0	0	0	0	1	0	0	0	0	0	0	0	0	0
Atom B	0	0	0	0	0	0	0	0	0	3	2	0	0	0	0	0	0	0	0	0	0	0	0	0	0	0	0	0	1	2	0
Atom HL	0	0	0	0	0	0	0	0	0	1	1	0	0	0	0	0	0	0	0	0	0	0	0	0	0	0	0	0	0	0	0
TOTAL - ATOM	0	0	0	0	0	0	0	0	0	11	6	0	0	0	0	0	0	0	0	0	0	4	1	0	0	0	0	0	1	5	0
Peewee AA	0	0	0	1	1	0	0	0	0	8	2	0	0	0	0	0	0	0	0	0	0	5	1	0	1	0	0	0	1	4	1
Peewee A	0	0	0	0	0	0	0	0	0	3	3	0	1	0	0	0	0	0	0	0	0	4	2	0	0	0	0	1	0	4	0
Peewee BB	0	0	1	0	0	0	0	0	0	3	1	0	0	1	0	0	0	0	0	0	0	8	2	0	0	0	0	0	0	3	0
Peewee B	0	0	0	1	0	0	0	0	0	5	3	0	0	0	0	0	0	0	0	0	1	7	4	0	0	0	0	1	0	5	0
Peewee C	0	0	0	0	0	0	0	0	0	1	1	0	0	0	0	0	0	0	0	0	0	0	0	0	0	0	0	0	0	0	0
TOTAL - PEEWEE	0	0	1	2	1	0	0	0	0	22	10	0	1	1	0	0	0	0	0	0	1	26	10	0	1	0	0	2	1	16	1
Bantam AA	0	0	3	1	2	0	0	0	0	11	1	0	0	1	0	0	0	0	0	0	0	16	4	0	0	1	0	0	0	10	0
Bantam A	0	0	2	0	0	0	0	0	0	5	1	0	0	1	0	0	0	0	0	0	0	15	2	0	1	1	0	0	0	12	1
Bantam BB	0	1	0	0	1	0	0	0	0	6	5	0	0	2	0	0	0	0	0	0	0	14	2	0	0	2	0	0	7	1	
Bantam B	0	0	2	1	2	0	0	0	1	6	6	0	0	3	0	0	0	0	0	0	0	10	5	0	2	1	0	0	9	0	
Bantam C	0	0	0	0	1	0	0	0	0	2	2	0	0	2	0	0	0	0	0	0	0	3	1	0	0	0	0	0	2	0	
Bantam HL	0	0	1	1	1	0	0	0	1	8	5	0	0	2	0	0	0	0	0	0	0	7	1	0	0	0	2	0	8	1	
TOTAL - BANTAM	0	1	8	3	7	0	0	0	2	38	21	0	0	11	0	0	0	0	0	0	0	66	15	0	3	5	2	0	48	3	
Midget AA	0	0	8	5	5	0	0	0	2	17	11	0	1	3	0	0	0	0	0	0	0	29	5	0	0	0	0	0	0	19	1
Midget A	0	0	6	6	7	0	0	1	0	13	5	2	0	3	1	0	0	0	0	0	0	27	8	0	2	5	0	0	8	0	
Midget BB	0	0	3	0	1	0	0	0	2	9	6	0	0	4	0	0	0	1	0	0	0	24	4	1	1	2	2	0	10	1	
Midget B	1	0	3	4	2	0	0	0	0	10	2	2	0	12	2	1	2	4	0	2	0	11	9	0	1	0	2	2	7	0	
Midget C	0	0	1	0	1	0	0	0	0	3	2	0	0	2	1	1	0	0	0	0	0	6	2	0	0	1	0	1	3	0	
Midget HL	0	0	2	2	0	0	0	0	2	6	5	0	0	17	2	1	0	1	1	0	0	3	1	0	1	1	6	2	1	1	
Midget Unknown	0	0	0	0	0	0	0	0	0	2	0	0	0	0	0	0	0	0	0	0	0	0	0	0	0	0	0	0	1	0	
TOTAL - MIDGET	1	0	23	17	16	0	0	1	6	60	31	4	1	41	6	3	2	6	1	2	0	100	29	1	5	9	10	5	49	3	
Intermediate AA	0	0	1	2	2	0	0	0	0	1	1	0	0	1	0	0	0	0	0	0	0	13	3	0	0	2	0	0	3	0	
Intermediate A	0	0	2	2	4	0	0	0	0	8	7	2	1	10	1	1	6	0	0	0	0	9	1	0	1	2	0	0	5	0	
Intermediate B	0	0	0	0	0	0	0	0	0	0	0	0	0	0	0	0	0	0	0	0	0	2	1	0	1	0	1	0	0	0	
Intermediate HL	0	0	3	0	1	0	0	1	0	7	4	0	0	3	0	0	0	0	0	0	0	2	2	0	0	0	0	0	3	0	
TOTAL - INTERMED.	0	0	6	4	7	0	0	1	0	16	12	2	1	14	1	1	6	0	0	0	0	26	7	0	2	4	1	0	11	0	
Senior AA	0	0	0	0	0	0	0	0	0	0	2	0	0	0	0	0	0	0	0	0	0	1	0	0	0	0	0	0	0	0	
Senior A	1	0	7	3	0	0	0	0	0	5	4	1	0	2	0	0	0	0	0	0	0	4	2	0	0	0	0	0	4	1	
Senior BB	0	0	0	0	0	0	0	0	0	0	0	0	0	0	0	0	0	0	0	0	0	2	0	0	0	0	0	0	0	0	
Senior B	0	0	2	0	0	0	0	0	0	3	4	0	0	0	0	0	0	0	0	0	0	3	0	0	0	0	0	0	3	0	
Senior HL	1	0	2	0	3	1	1	0	0	2	3	1	0	0	0	0	0	0	0	0	0	0	0	0	0	1	0	0	1	0	
TOTAL - SENIOR	2	0	12	3	4	1	1	0	0	11	14	2	0	2	0	0	0	0	0	0	0	12	2	0	0	2	0	0	8	1	
UNKNOWN - TOTAL	0	0	0	0	1	0	0	0	0	0	1	0	0	0	0	0	0	0	0	0	0	1	0	0	0	0	1	0	0	0	
TOTAL	3	1	50	29	36	1	1	2	8	162	97	8	3	69	7	4	8	6	1	2	1	235	64	1	11	20	16	7	137	8	

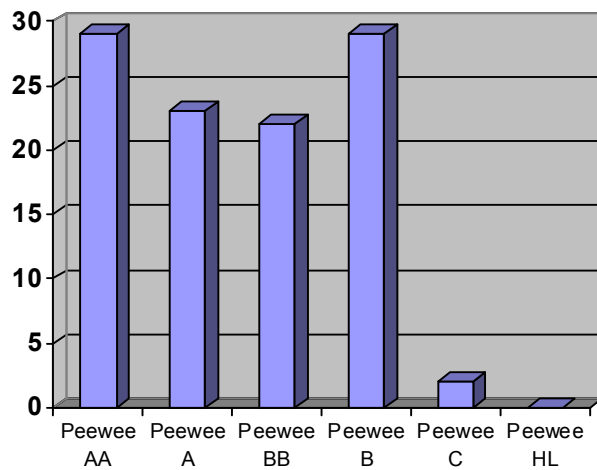
	Major Penalties												Gross Misconducts		Match Penalties								OWHA Sanctions			
NAME	GM59 (Charging)	GM64 (Trash Talking)	GM71 (Head Checking)	GM73 (Tripping)	GM74 (Interference)	GM75 (Holding)	GM76 (Hooking)	GM77 (Roughing)	GM79 (Refusing to start play)	GM80 (Team Official Interference Dist)	GM81 (Leaving Bench)	GM99 (Miscellaneous)	GRM60 (Travesty Game)	GRM61 (Obscene Gestures)	GRM63 (Discriminatory Slurs)	GRM64 (Trash Talking)	MP25 (Physical Abuse of Official)	MP40 (Intent to InJure)	MP45 (Kicking)	MP52 (Checking from Behind)	MP72 (Head Checking)	MP99 (Miscellaneous)	Illegal Player	Coach Using Illegal Player	Total Misconducts Assessed	TOTAL Game/Gross/Match
Novice A	0	0	0	0	0	0	0	0	0	0	0	0	0	0	0	0	0	0	0	0	0	0	0	0	0	1
Novice B	0	0	0	1	0	0	0	0	0	0	0	0	0	0	0	0	0	0	0	0	0	0	0	0	0	4
Novice Unknown	0	0	0	0	0	0	0	0	0	0	0	0	0	0	0	0	0	0	0	0	0	0	1	0	0	1
TOTAL - NOVICE	0	0	0	1	0	0	0	0	0	0	0	0	0	0	0	0	0	0	0	0	0	0	1	0	0	8
Atom AA	0	0	0	1	0	0	0	0	0	0	0	0	0	0	0	0	0	0	1	0	0	0	0	0	0	11
Atom A	0	0	0	0	0	0	0	0	0	0	0	0	0	0	0	0	0	0	0	0	0	0	0	0	0	5
Atom BB	0	0	0	0	0	0	0	0	0	0	0	0	0	0	0	0	0	0	0	0	0	0	0	0	0	4
Atom B	0	0	0	0	0	0	0	0	0	0	0	0	0	0	0	0	0	0	0	0	0	0	0	0	0	8
Atom HL	0	0	0	0	0	0	0	0	0	2	0	0	0	0	0	0	0	0	1	0	0	0	0	0	0	5
TOTAL - ATOM	0	0	0	1	0	0	0	0	0	2	0	0	0	0	0	0	0	0	2	0	0	0	0	0	0	33
Peewee AA	0	0	0	0	1	0	1	0	0	0	0	0	1	0	0	0	0	0	1	0	0	0	0	0	0	29
Peewee A	0	0	3	1	0	0	0	0	0	0	0	0	1	0	0	0	0	0	0	0	0	0	0	0	0	23
Peewee BB	0	0	0	0	0	0	0	0	0	0	0	0	2	0	0	0	0	0	0	0	1	0	0	0	1	22
Peewee B	0	0	1	0	0	0	0	0	0	0	0	0	1	0	0	0	0	0	0	0	0	0	0	0	1	29
Peewee C	0	0	0	0	0	0	0	0	0	0	0	0	0	0	0	0	0	0	0	0	0	0	0	0	0	2
TOTAL - PEEWEE	0	0	4	1	1	0	1	0	0	0	0	0	6	0	0	0	0	0	2	0	1	0	0	0	0	112
Bantam AA	0	0	5	2	1	0	1	1	0	0	0	0	3	0	0	0	1	0	2	0	0	0	0	0	0	66
Bantam A	0	0	3	2	2	0	0	4	0	0	1	1	1	0	1	0	0	0	2	0	0	0	0	0	0	58
Bantam BB	0	1	2	1	1	0	0	1	0	0	0	0	0	0	0	0	0	0	0	0	0	0	0	0	2	47
Bantam B	0	1	5	1	2	0	0	0	0	0	0	0	2	3	0	0	0	0	0	0	0	0	0	0	5	62
Bantam C	0	0	0	0	0	0	0	0	0	0	0	0	0	0	0	0	0	0	0	0	0	0	0	0	1	13
Bantam HL	0	0	2	0	0	0	0	0	0	0	0	0	0	0	0	0	0	1	4	0	0	0	0	0	3	45
TOTAL - BANTAM	0	2	18	6	6	0	1	6	0	0	1	1	6	3	1	0	1	1	8	0	0	0	0	0	19	294
Midget AA	0	0	12	3	3	0	0	2	0	0	0	0	3	0	1	0	0	1	1	0	0	1	0	1	18	134
Midget A	0	5	13	1	1	0	0	3	0	0	0	0	3	0	0	0	0	1	0	0	0	0	0	1	19	122
Midget BB	1	1	6	3	2	0	0	2	0	0	0	0	2	1	0	0	0	1	1	0	2	0	0	0	4	93
Midget B	0	1	4	1	0	0	0	3	0	0	0	0	2	0	0	0	0	0	3	0	0	0	0	0	10	93
Midget C	1	0	2	0	1	0	0	1	0	0	0	0	0	1	0	1	0	0	0	0	0	0	0	0	2	31
Midget HL	0	0	3	0	1	0	1	1	1	0	0	0	3	0	1	0	2	0	0	1	0	0	0	0	4	69
Midget Unknown	0	0	0	0	0	0	0	0	0	0	0	0	0	0	0	0	0	0	0	0	0	0	0	0	0	3
TOTAL - MIDGET	2	7	40	8	8	0	1	12	1	0	0	0	13	2	2	1	2	3	5	1	2	1	0	2	57	545
Intermediate AA	1	0	1	0	0	0	3	0	0	0	0	0	1	0	0	0	0	1	1	0	0	0	0	0	5	37
Intermediate A	1	1	6	0	0	0	0	2	0	0	2	1	0	0	0	0	0	0	1	0	0	0	0	0	8	76
Intermediate B	1	0	0	0	0	0	0	0	0	0	0	0	0	0	0	0	0	0	0	0	0	0	0	0	6	
Intermediate HL	0	0	1	1	0	0	1	1	2	0	0	0	2	3	0	0	0	1	0	0	0	0	0	0	4	38
TOTAL - INTERMED.	3	1	8	1	0	0	4	3	2	0	2	1	3	3	0	0	0	2	2	0	0	0	0	0	17	157
Senior AA	0	0	1	1	0	0	0	0	0	0	0	0	0	0	0	0	0	0	0	0	0	0	0	0	0	5
Senior A	0	0	4	0	1	0	0	0	0	0	0	0	1	0	0	0	0	1	0	0	0	0	0	0	11	41
Senior BB	0	0	0	0	0	0	0	0	0	0	0	0	0	0	0	0	0	0	0	0	0	0	0	0	2	
Senior B	0	0	0	0	0	1	0	0	0	0	0	0	0	0	0	0	0	1	0	0	0	0	0	0	2	17
Senior HL	1	0	3	0	0	0	0	1	0	0	0	1	1	0	0	0	1	1	2	0	0	0	0	0	8	27
TOTAL - SENIOR	1	0	8	1	1	1	0	1	0	0	0	1	2	0	0	0	1	3	2	0	0	0	0	0	23	99
UNKNOWN - TOTAL	0	0	0	0	0	0	0	0	0	0	0	0	0	0	0	0	0	0	0	0	0	0	0	0	1	4
TOTAL	6	10	78	19	16	1	7	22	3	2	3	3	30	8	3	1	4	9	21	1	3	1	1	2	121	1252

2011-2012 SUSPENSIONS BY DIVISION

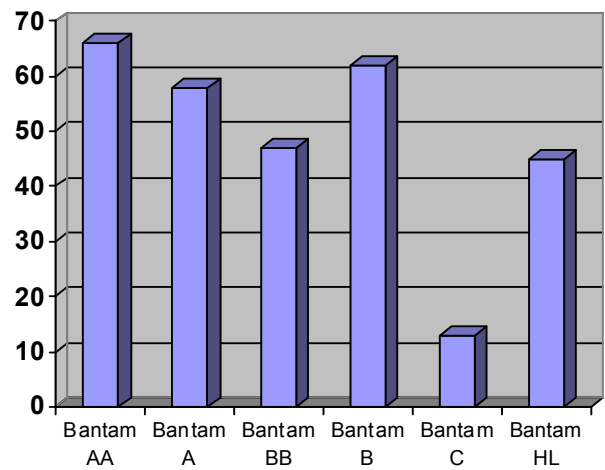
Suspensions by Level



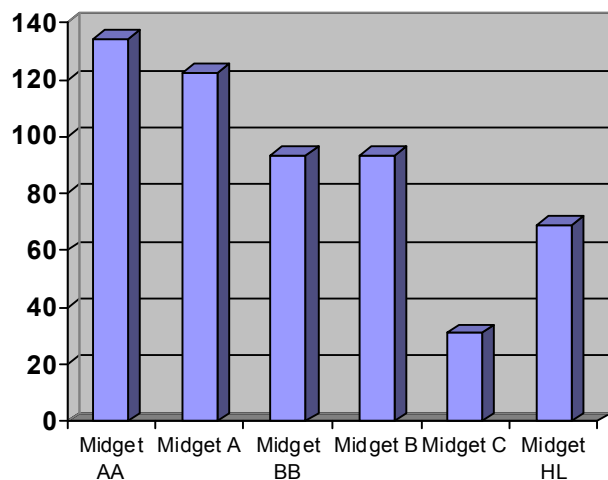
Peewee



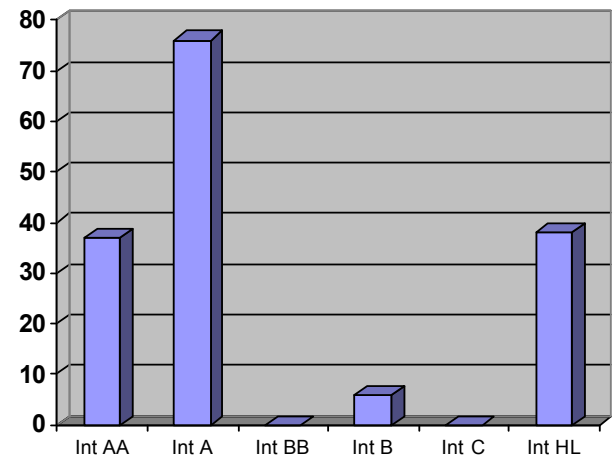
Bantam



Midget



Intermediate





INJURY REPORTS



The following charts provide statistics derived from the Hockey Canada Injury Report forms &/or HDCO Injury Report surveys received at the OWHA office in 2011-2012. The injury reports "By Division" and "By Injury Type" charts include statistics from the previous seasons for comparison purposes. Registration growth in "# of Players by Division" can be found in the OWHA registration report.

Injury Reports – by Division

DIVISION	COMPETITIVE							HOUSE LEAGUE							2011-12
Season	05-06	06-07	07-08	08-09	09-10	10-11	11-12	05-06	06-07	07-08	08-09	09-10	10-11	11-12	TOTALS
Novice	0	0	4	2	-	0	1	3	1	1	1	1	1	2	3
Atom	8	12	4	13	9	24	16	3	5	4	3	4	6	6	22
Peewee	24	21	24	26	30	42	44	7	7	9	12	12	6	10	54
Bantam	60	59	63	72	74	79	101	12	7	5	14	17	15	15	116
Midget	64	69	79	91	87	108	106	11	21	13	14	14	22	22	128
Intermediate	33	30	12	20	22	23	17	6	4	3	1	4	5	12	29
Senior	34	35	12	28	15	15	17	20	21	11	15	19	3	11	28
Masters	--	--	--	--	--	--	--	--	1	--	--	--	--	--	1
Officials (On-Ice)	6	4	2	2	4	1	2	0	0	0	--	--	--	--	2
Staff	2	3	1	1	2	6	1	1	2	0	-	6	0	--	1
TOTALS	231	233	201	255	243	298	305	62	69	46	60	77	58	76	381

Reported Injuries – by Injury Type

INJURY TYPE	# Reported Injuries by Season							INJURY TYPE	# Reported Injuries by Season						
	11-12	10-11	09-10	08-09	07-08	06-07	05-06		11-12	10-11	09-10	08-09	07-08	06-07	05-06
Chin	0	0	0	0	0	0	0	Face	9	4	4	6	1	5	1
Dehydration	0	0	0	0	0	0	0	Groin	3	5	2	5	1	7	2
Ear	0	0	0	0	0	0	0	Hip	2	4	3	6	2	10	9
Internal Injury	0	1	0	0	0	1	0	Finger	2	6	2	7	3	9	13
Jaw	0	1	1	0	0	0	1	Hand	5	3	12	6	3	9	11
Mouth	0	0	0	0	0	0	1	Arm	10	2	3	6	5	4	7
Nose	1	0	0	0	0	1	0	Head/Skull	4	16*	5*	2*	5*	13*	15*
Pelvis	0	0	1	0	0	0	0	Ribs	1	6	9	6	5	3	14
Shin	2	3	6	6	0	6	6	Elbow	6	11	5	9	6	5	7
Spine	0	0	0	0	0	1	1	Foot	10	13	10	16	6	14	12
Sternum	0	0	0	1	0	0	0	Thigh	0	5	3	5	6	10	2
Tailbone	1	1	2	2	0	0	2	Ankle	9	13	13	5	9	17	8
Thumb	0	1	0	2	0	0	3	Collarbone	8	5	7	9	9	7	9
Chest	5	4	3	3	1	0	4	Wrist/Forearm	19	29	23	22	20	38	24
Leg	6	5	3	4	1	2	4	Back	26	45	25	30	28	31	41
Throat	1	1	0	5	2	1	3	Shoulder	18	36	26	32	31	37	29
Eye	1	0	0	4	3	0	2	Neck	25	34	28	23	34	45	69
Teeth/Dental	5	1	2	1	3	3	0	Knee	32	43	36	41	40	39	33
Abdominal	1	2	0	2	4	2	2	Concussion	160	115	102	89	63	62	68

* Concussion statistic listed separately

** Number includes concussions

*** Internal injury as a result of a car accident on way to a game

Reported Injuries by Month (%)

	Jun	Jul	Aug	Sep	Oct	Nov	Dec	Jan	Feb	Mar	Apr
2011-2012	0.7	1.04	1.57	7.61	17.84	16.01	6.04	6.83	8.14	5.77	3.94
2010-2011	-	.56	0	7.30	17.69	25.56	8.99	12.92	10.39	4.49	1.12
2009-2010	.65	-	2.91	10.09	14.66	18.57	12.06	14.98	14.33	8.79	2.95
2008-2009	.34	0	1.65	7.92	16.17	25.74	10.56	16.83	13.86	4.95	1.98
2007-2008	0	0	.45	7.69	17.81	19.02	11.33	17.00	13.36	10.52	1.65
2006-2007	.33	0	.33	6.29	10.93	22.52	16.56	15.56	16.56	5.30	5.63
2005-2006	0	0	0	5.10	17.35	22.79	12.93	11.90	18.37	6.46	5.10
2004-2005	0	0	.78	4.65	18.99	22.09	8.14	17.44	17.05	8.53	2.33

IN LOVING MEMORY OF VERY SPECIAL TEAMMATES



The Ontario Women's Hockey Association was saddened by the tragic loss of **Emily Marie Jerome**. On February 18th, 2012, Emily passed away suddenly at the age of 16. She was the captain of the Stoney Creek Sabres Midget BB team and the Saltfleet Girls Hockey team. She was a big sports fan and enjoyed following her favorite events whenever she had the opportunity to do so. She is survived by parents, Cathy and Brad, sisters, Katie, Rebecca, Sarah and her brother Alex and Grandfather Ray Jerome. Emily is loved by her teammates, they will miss her and will play on in her memory. The thoughts and prayers of the Ontario Women's Hockey Association are with her family and friends.

The Ontario Women's Hockey Association is saddened by the death of **Ron Kenny** after a brief and courageous battle with cancer on September 28th, 2011. Our thoughts and prayers go out to his family and friends. Ron was a valued member with the OWH. He manufactured and provided the jerseys and clothing which the OWH provides to their players. He exemplified the standard and spirit of being a true hockey champion that very few will achieve. He is well known and loved as a key contributor with the OWH and the community. We are fortunate to have been able to work with Ronny for many productive years. He was bigger than life and could be counted on when a shoulder was needed to lean on. Ron will also be sadly missed by all those whose lives he has touched.



The Ontario Women's Hockey Association is extremely saddened by the passing of **Tony Bloomfield**. Tony served for many years on the OWH Board as a representative of the Ontario Hockey Association. Tony was a very strong supporter of female hockey and a great friend to the OWH. We will miss his supportive voice and vast experience in the game of hockey. Our thoughts are with his son Keith and Tony's family and friends.

Dawn Bailey suddenly passed away July 31st, 2011. Loving daughter of Bruce and Marj Bailey. Fondly remembered by her sister Alma Bailey. Dawn's whole life was dedicated to the sport of Hockey through playing, organizing, refereeing, and coaching for youth and adults. It was on ice that Dawn was happiest. The sound of her skates against the ice will always be missed. The Ontario Women's Hockey Association is truly saddened by the loss of a long-time member and special friend. Our thoughts and prayers are with Dawn's family and friends.



Andrea Blakeley of the Kanata Rangers passed away on April 25th, 2012. Andrea Played hockey for the Senior A Kanata Rangers in Ottawa. She will always be remembered with great fondness as a very special friend and teammate. We thank Andrea for enriching the lives of those who had the honour of knowing her. The thoughts and prayers of the Ontario Women's Hockey Association are with her family and friends.

John Armstrong

The Hockey Community is saddened to announce the passing of John Armstrong. On April 19th, John passed away at the age of 52. He was the coach of the Whitby Wolves Pee wee AA team. John was fiercely committed to hockey. He strived to give his best in all that he did. He will be greatly missed by the team and the Whitby hockey community. The OWH thanks for John for his contribution to female hockey.



Joan Padmore

The Ontario Women's Hockey Association was saddened by the loss of a very special volunteer Joan Padmore. Joan served as Toronto-Leaside's registrar and a board member for 13 years. She later served as Treasurer and on the board of directors for the Toronto Aeros. In her honour, the senior division will be re-named, "The Joan Padmore Memorial division." She will be sadly missed by the Toronto Aeros and Toronto-Leaside Hockey Associations.



The Ontario Women's Hockey Association was saddened to hear of the passing of **Luanne Reid**. After a lengthy battle with illness, Luanne passed away on January 31st. Our thoughts and prayers go out to her family and friends. Luanne will be sorely missed by all those who knew her.

The participants and supporters of the Ontario Women's Hockey Association Provincial Championship and all the members of the Ontario Women's Hockey Association extend our most sincere condolences to the families and friends of our lost ones. You will all be forever remembered for your participation in women's hockey.