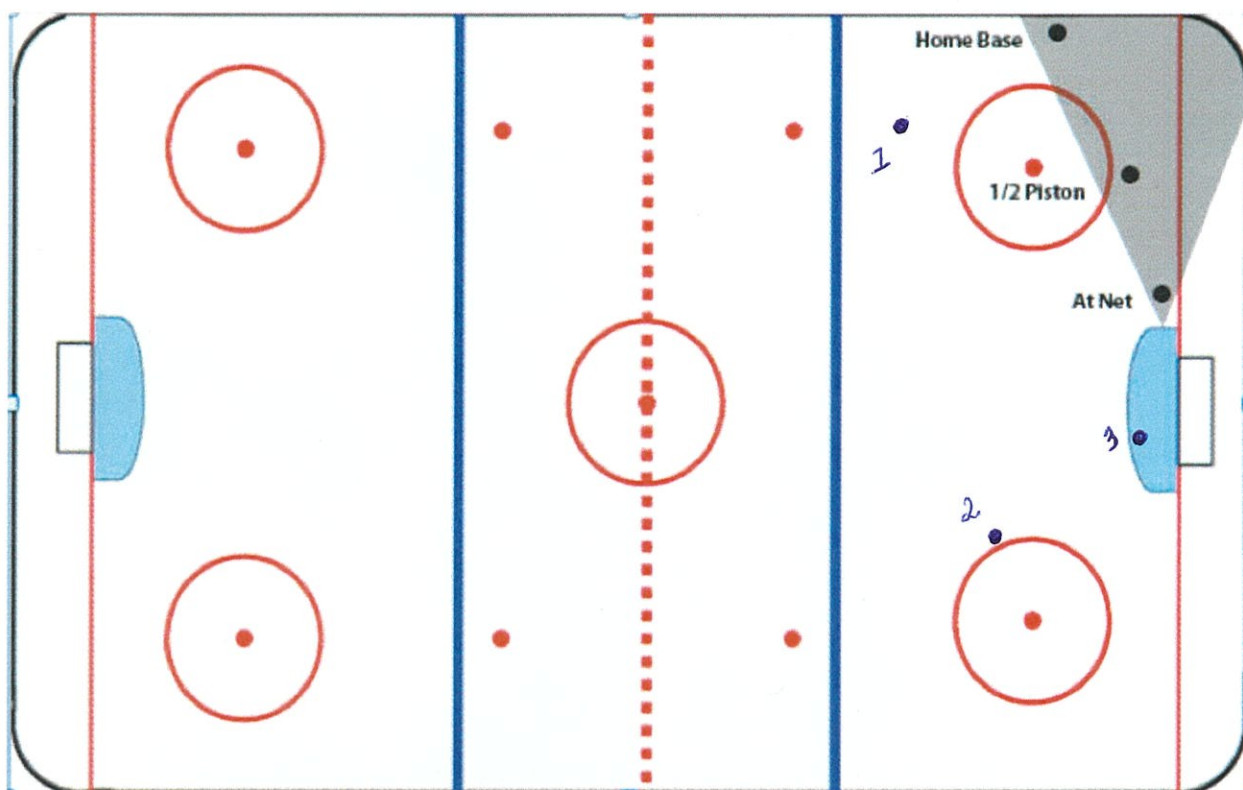




WINKLER MINOR HOCKEY



The three parts of end zone positioning are:

- 1) Home base: the official is here if the puck is on her side of the ice.
- 2) Half-Piston: the official is here if the puck is on the far side of the ice.
- 3) At-the-Net: the official is here if the puck is near the goal.

On the above diagram, **black dots** represent the position of the referee and **blue Dots** represent the **position of the puck**.

Here is an example of how the referee moves in relation to the puck. When the puck is at blue dot (1), the referee should be at position black dot (1) (Home Base). The puck is then passed to blue dot (2) and the referee moves into position black dot (2) (Half-Piston). The puck is shot on net at blue dot (3) so the referee moves to position black dot (3) (at-the-net)